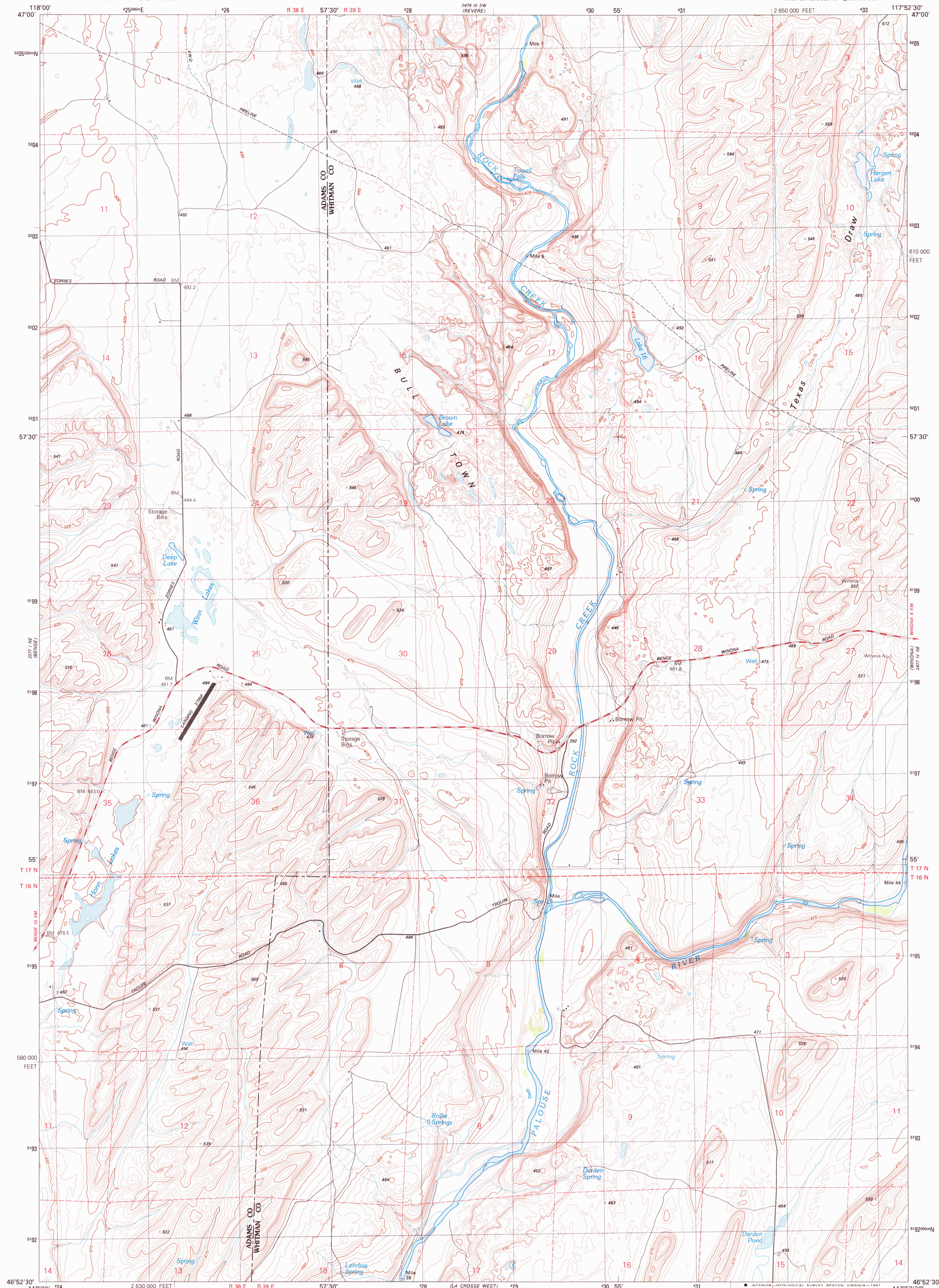


UNITED STATES  
DEPARTMENT OF THE INTERIOR  
GEOLOGICAL SURVEY

HONN LAKES QUADRANGLE  
WASHINGTON  
7.5 MINUTE SERIES (TOPOGRAPHIC)  
NW/4 LA CROSSE 15' QUADRANGLE

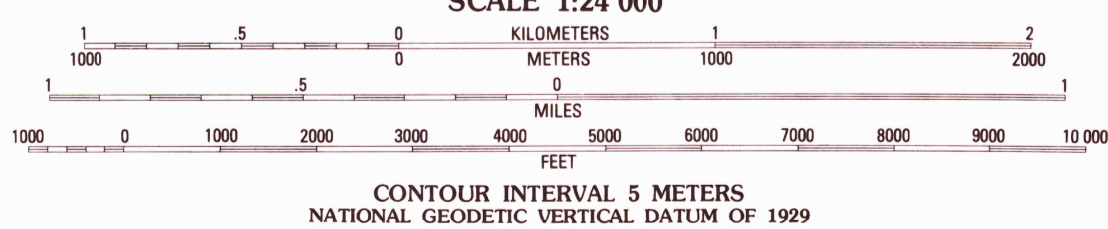
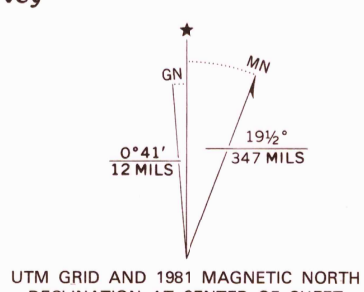


Produced by the United States Geological Survey

Control by USGS and NOS/NOAA

Compiled by photogrammetric methods from aerial photographs taken 1975. Field checked 1976. Map edited 1981.

Projection and 1000-meter grid, zone 11, Universal Transverse Mercator. 10,000-foot grid ticks based on Washington coordinate system, south zone. 1927 North American Datum. To place on the predicted North American Datum 1983 move the projection lines 17 meters north and 81 meters east as shown by dashed corner ticks.



ROAD CLASSIFICATION

- Primary highway, hard surface . . . . .
- Secondary highway, hard surface . . . . .
- Light-duty road, hard or improved surface . . . . .
- Unimproved road . . . . .
- Interstate Route
- U. S. Route
- State Route



HONN LAKES, WASH.  
NW/4 LA CROSSE 15' QUADRANGLE  
N4652.5-W11752.5/7.5

1981

DMA 2477 IV NW—SERIES V891

THIS MAP COMPLIES WITH NATIONAL MAP ACCURACY STANDARDS FOR SALE BY U. S. GEOLOGICAL SURVEY, DENVER, COLORADO 80225, OR RESTON, VIRGINIA 22092. A FOLDER DESCRIBING TOPOGRAPHIC MAPS AND SYMBOLS IS AVAILABLE ON REQUEST.

CONTOURS AND ELEVATIONS IN METERS

USGS AND HISTORICAL MAP ARCHIVES

NOV 27 1981

1900