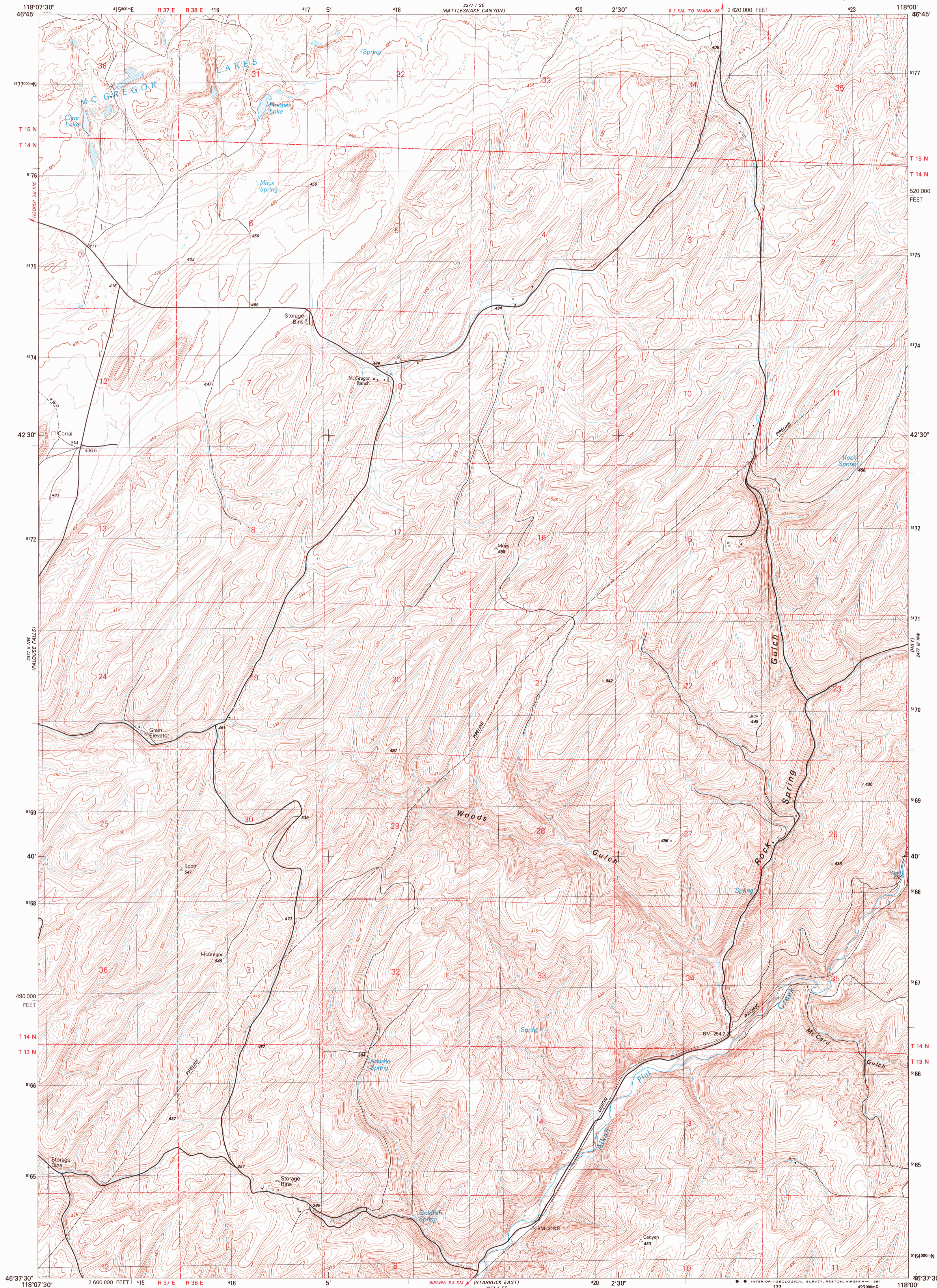


UNITED STATES  
DEPARTMENT OF THE INTERIOR  
GEOLOGICAL SURVEY

HOOPER LAKE QUADRANGLE  
WASHINGTON-WHITMAN CO.  
7.5 MINUTE SERIES (TOPOGRAPHIC)  
NE/4 STARBUCK 15' QUADRANGLE

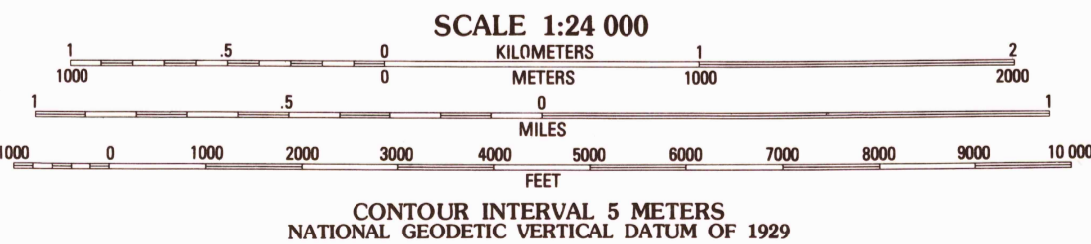
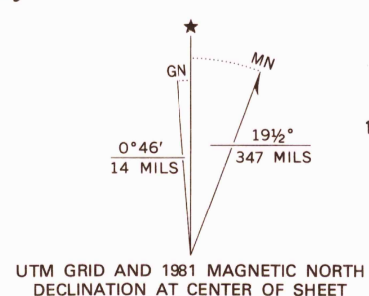


Produced by the United States Geological Survey

Control by USGS and NOS/NOAA  
Compiled by photogrammetric methods from aerial photographs taken 1975. Field checked 1976  
Map edited 1981

Projection and 1000-meter grid, zone 11, Universal Transverse Mercator  
10,000-foot grid ticks based on Washington coordinate system, south zone, 1927 North American Datum  
To place on the predicted North American Datum 1983 move the projection lines 17 meters north and 82 meters east as shown by dashed corner ticks

Five red dashed lines indicate selected fence and field lines where generally visible on aerial photographs  
This information is unchecked



CONTOUR INTERVAL 5 METERS  
NATIONAL GEODETIC VERTICAL DATUM OF 1929

THIS MAP COMPLIES WITH NATIONAL MAP ACCURACY STANDARDS  
FOR SALE BY U. S. GEOLOGICAL SURVEY, DENVER, COLORADO 80225, OR RESTON, VIRGINIA 22092  
A FOLDER DESCRIBING TOPOGRAPHIC MAPS AND SYMBOLS IS AVAILABLE ON REQUEST



CONTOURS AND ELEVATIONS  
IN METERS

ROAD CLASSIFICATION	
Primary highway, hard surface . . . . .	Light-duty road, hard or improved surface . . . . .
Secondary highway, hard surface . . . . .	Unimproved road . . . . .
Interstate Route	U. S. Route
	State Route

HOOPER LAKE, WASH.  
NE/4 STARBUCK 15' QUADRANGLE  
N4637.5-W11800.7.5

1981  
DMA 2377 II NE-SERIES V891

10005  
HISTORICAL FILE  
NATIONAL MAPPING DIVISION

AUG 3 1981  
2000