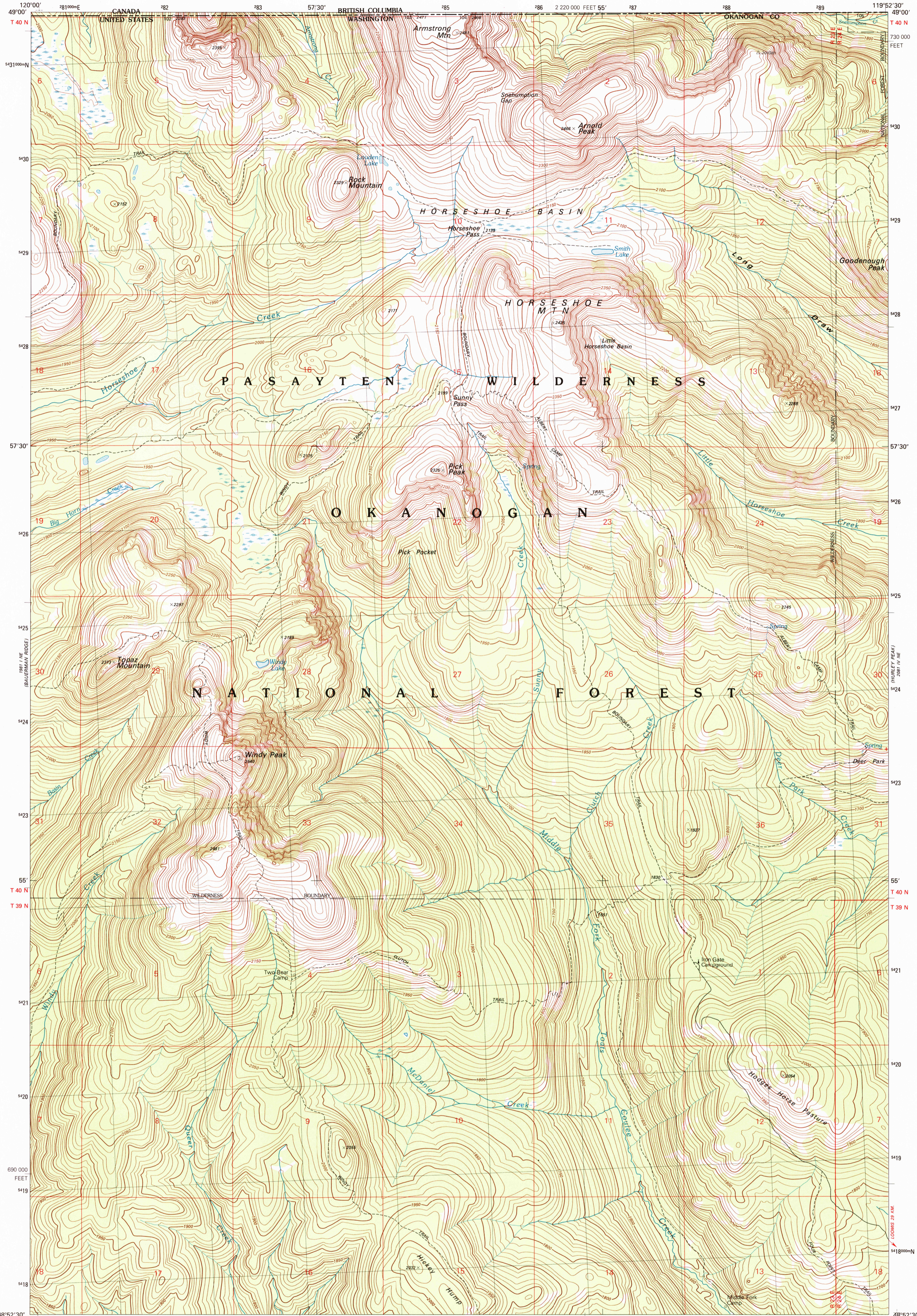




U.S. DEPARTMENT OF THE INTERIOR
U.S. GEOLOGICAL SURVEY

HORSESHOE BASIN QUADRANGLE
WASHINGTON-BRITISH COLUMBIA
7.5 MINUTE SERIES (TOPOGRAPHIC)
NW/4 HORSESHOE BASIN 15' QUADRANGLE



Produced by the United States Geological Survey

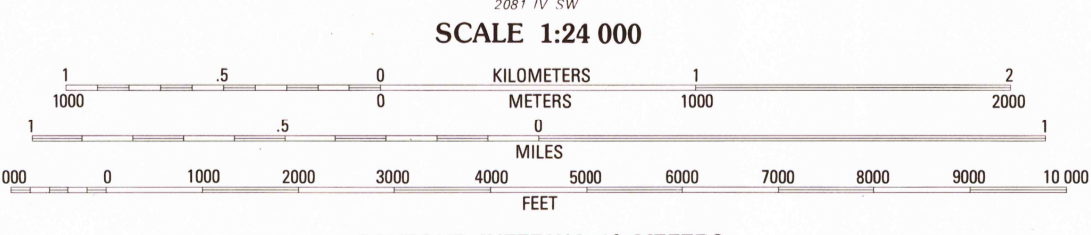
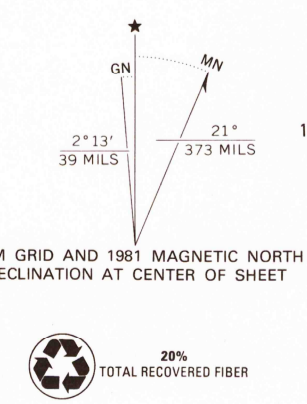
Control by USGS, NOS/NOAA and International Boundary Commission

Compiled by photogrammetric methods from aerial photographs taken 1974-75. Field checked 1976. Map edited 1981.

Projection and 1000-meter grid, zone 11.

Universal Transverse Mercator 10,000-foot grid ticks based on Washington coordinate system, north zone. 1927 North American Datum To place on the predicted North American Datum 1983 move the projection lines 19 meters north and 86 meters east as shown by dashed corner ticks

There may be private inholdings within the boundaries of the National or State reservations shown on this map



CONTOUR INTERVAL 10 METERS
NATIONAL GEODETIC VERTICAL DATUM OF 1929
CONTROL ELEVATIONS SHOWN TO THE NEAREST 0.1 METER
OTHER ELEVATIONS SHOWN TO THE NEAREST METER
TO CONVERT FEET TO METERS MULTIPLY BY 3048
TO CONVERT METERS TO FEET MULTIPLY BY 3.2808

THIS MAP COMPLIES WITH NATIONAL MAP ACCURACY STANDARDS FOR SALE BY U.S. GEOLOGICAL SURVEY, P.O. BOX 25286, DENVER, COLORADO 80225 A FOLDER DESCRIBING TOPOGRAPHIC MAPS AND SYMBOLS IS AVAILABLE ON REQUEST

ROAD CLASSIFICATION

Primary highway, hard surface Light-duty road, hard or improved surface
Secondary highway, hard surface Unimproved road
Interstate Route U. S. Route State Route

CONTOURS AND ELEVATIONS IN METERS

HORSESHOE BASIN, WASH.-B.C.
NW/4 HORSESHOE BASIN 15' QUADRANGLE
N4852.5-W11952.5/7.5

1981

DMA 2081 IV NW-SERIES V891

RECEIVED
DEC 31 1999
USGS
HISTORICAL ARCHIVES

