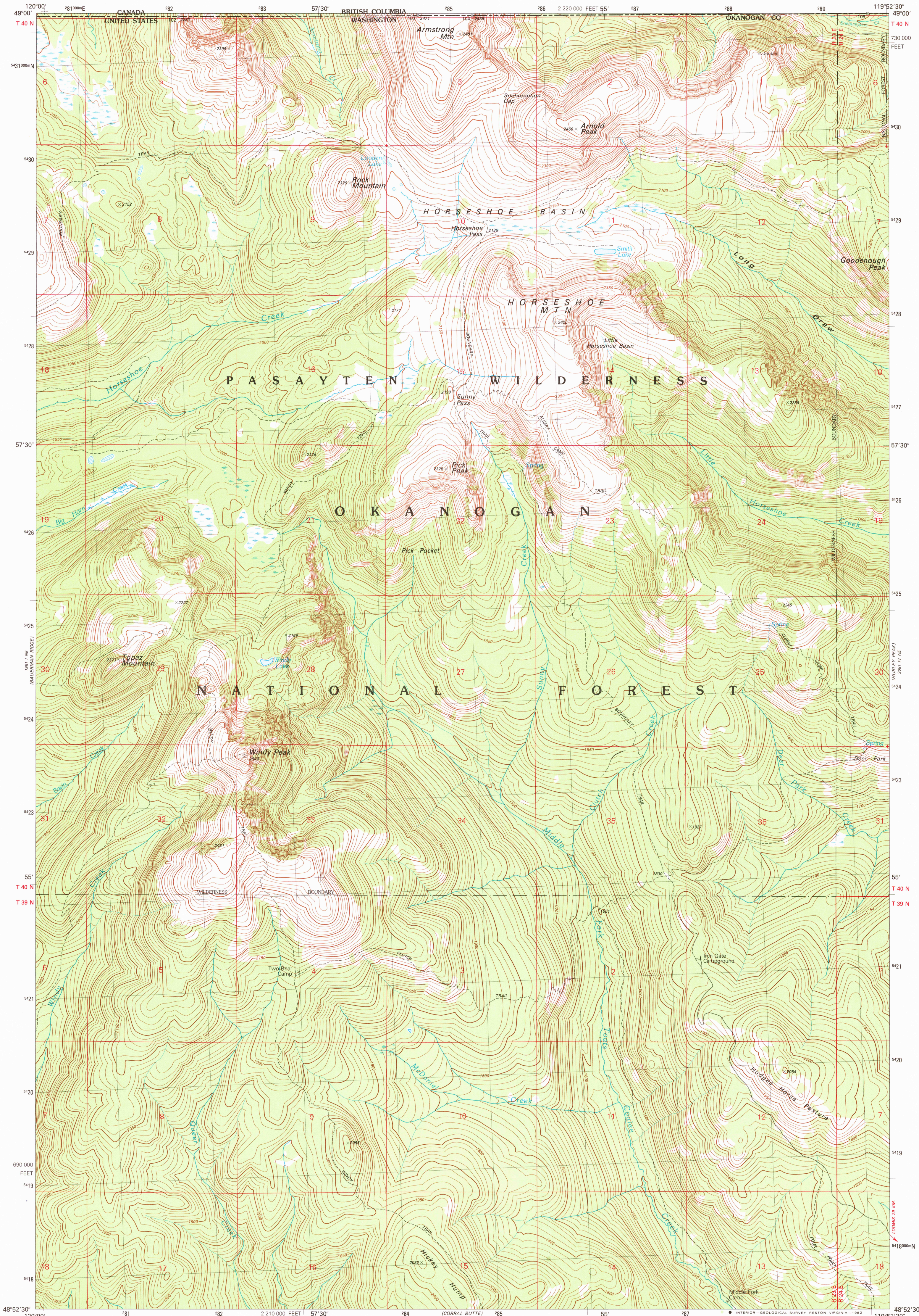


UNITED STATES  
DEPARTMENT OF THE INTERIOR  
GEOLOGICAL SURVEY

HORSESHOE BASIN QUADRANGLE  
WASHINGTON-BRITISH COLUMBIA  
7.5 MINUTE SERIES (TOPOGRAPHIC)  
NW/4 HORSESHOE BASIN 15' QUADRANGLE



Produced by the United States Geological Survey  
Control by USGS, NOS/NOAA and International Boundary Commission  
Compiled by photogrammetric methods from aerial photographs taken 1974-75. Field checked 1976  
Map edited 1981  
Projection and 1000-meter grid, zone 11, Universal Transverse Mercator  
10,000-foot grid ticks based on Washington coordinate system, north zone. 1927 North American Datum  
To place on the predicted North American Datum 1983 move the projection lines 19 meters north and 86 meters east as shown by dashed corner ticks  
There may be private inholdings within the boundaries of the National or State reservations shown on this map

SCALE 1:24 000  
CONTOUR INTERVAL 10 METERS  
NATIONAL GEODETIC VERTICAL DATUM OF 1929  
CONTROL ELEVATIONS SHOWN TO THE NEAREST 0.1 METER  
OTHER ELEVATIONS SHOWN TO THE NEAREST METER  
TO CONVERT FEET TO METERS MULTIPLY BY .3048  
TO CONVERT METERS TO FEET MULTIPLY BY 3.2808  
THIS MAP COMPLIES WITH NATIONAL MAP ACCURACY STANDARDS  
FOR SALE BY U.S. GEOLOGICAL SURVEY, DENVER, COLORADO 80225, OR RESTON, VIRGINIA 22092  
A FOLDER DESCRIBING TOPOGRAPHIC MAPS AND SYMBOLS IS AVAILABLE ON REQUEST

ROAD CLASSIFICATION  
Primary highway, hard surface .....  
Secondary highway, hard surface .....  
Unimproved road .....  
Interstate Route .....  
U. S. Route .....  
State Route .....  
HORSESHOE BASIN, WASH.-B.C.  
NW/4 HORSESHOE BASIN 15' QUADRANGLE  
N4852.5-W11952.5/7.5  
1981  
DMA 2081 IV NW-SERIES V891

RETURN TO :  
USGS AND HISTORICAL MAP ARCHIVES

DEC 01 1982

2000