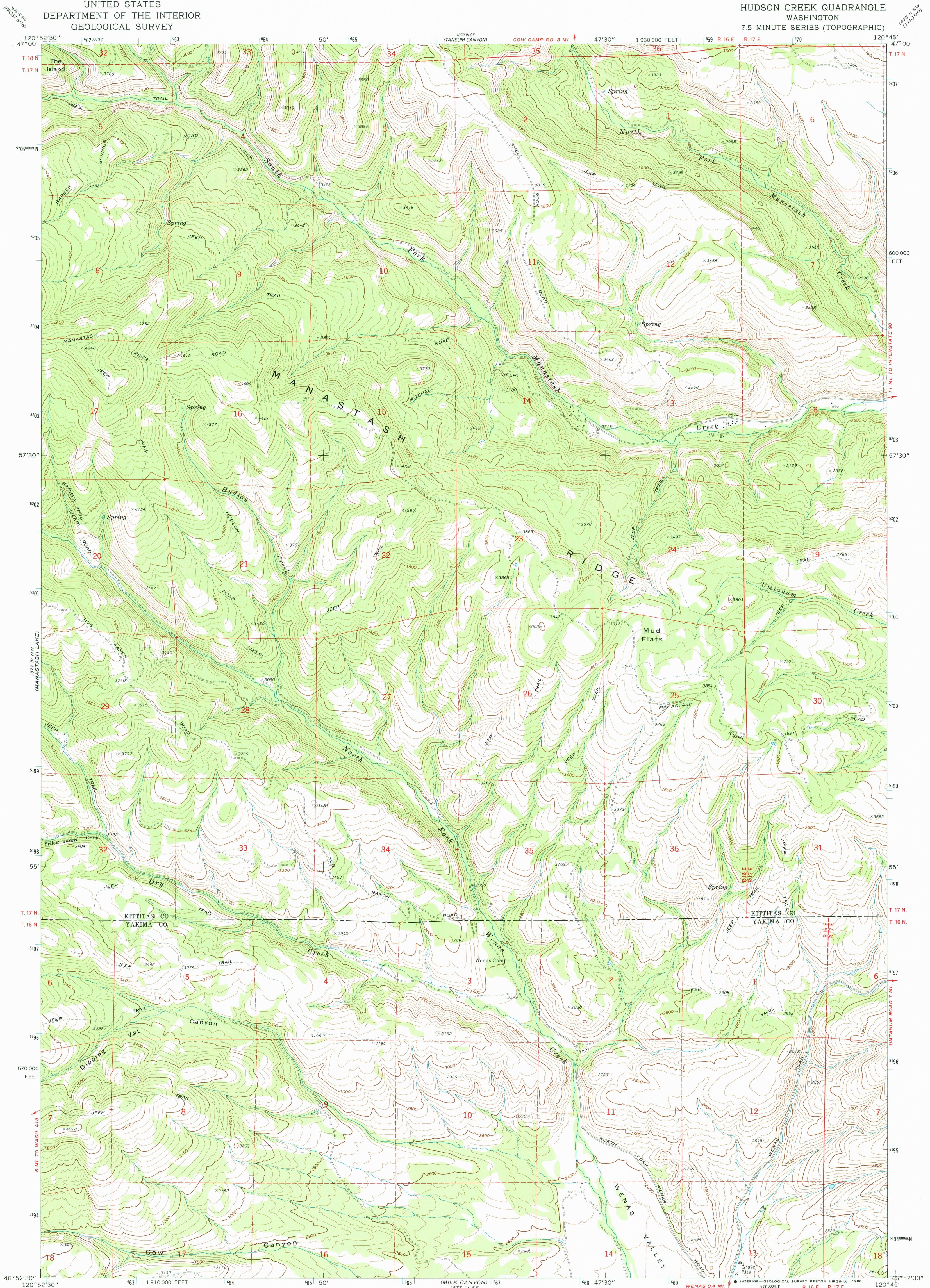


UNITED STATES  
DEPARTMENT OF THE INTERIOR  
GEOLOGICAL SURVEY

HUDSON CREEK QUADRANGLE  
WASHINGTON  
7.5 MINUTE SERIES (TOPOGRAPHIC)



Mapped, edited, and published by the Geological Survey

Control by USGS and USC&GS

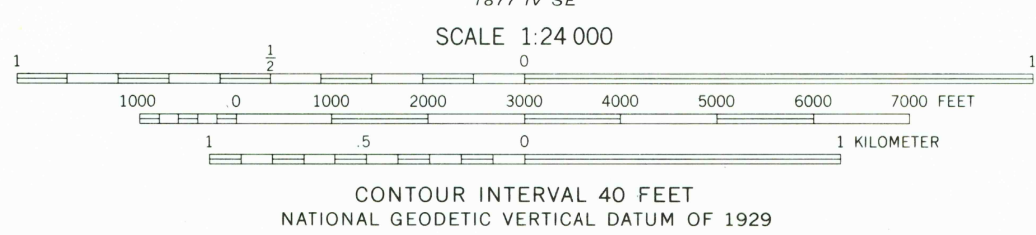
Topography by photogrammetric methods from aerial photographs taken 1970. Field checked 1971

Projection and 10,000-foot grid ticks: Washington coordinate system, south zone (Lambert conformal conic)

1000-meter Universal Transverse Mercator grid ticks, zone 10, shown in blue. 1927 North American datum

To place on the predicted North American Datum 1983 move the projection lines 21 meters north and 89 meters east as shown by dashed corner ticks

Fine red dashed lines indicate selected fence lines



ROAD CLASSIFICATION  
Primary highway, hard surface  
Secondary highway, hard surface  
Unimproved road  
Interstate Route  
U. S. Route  
State Route



HUDSON CREEK, WASH.

46120 H7 TF-024  
1971

DMA 1877 IV NE-SERIES V891

