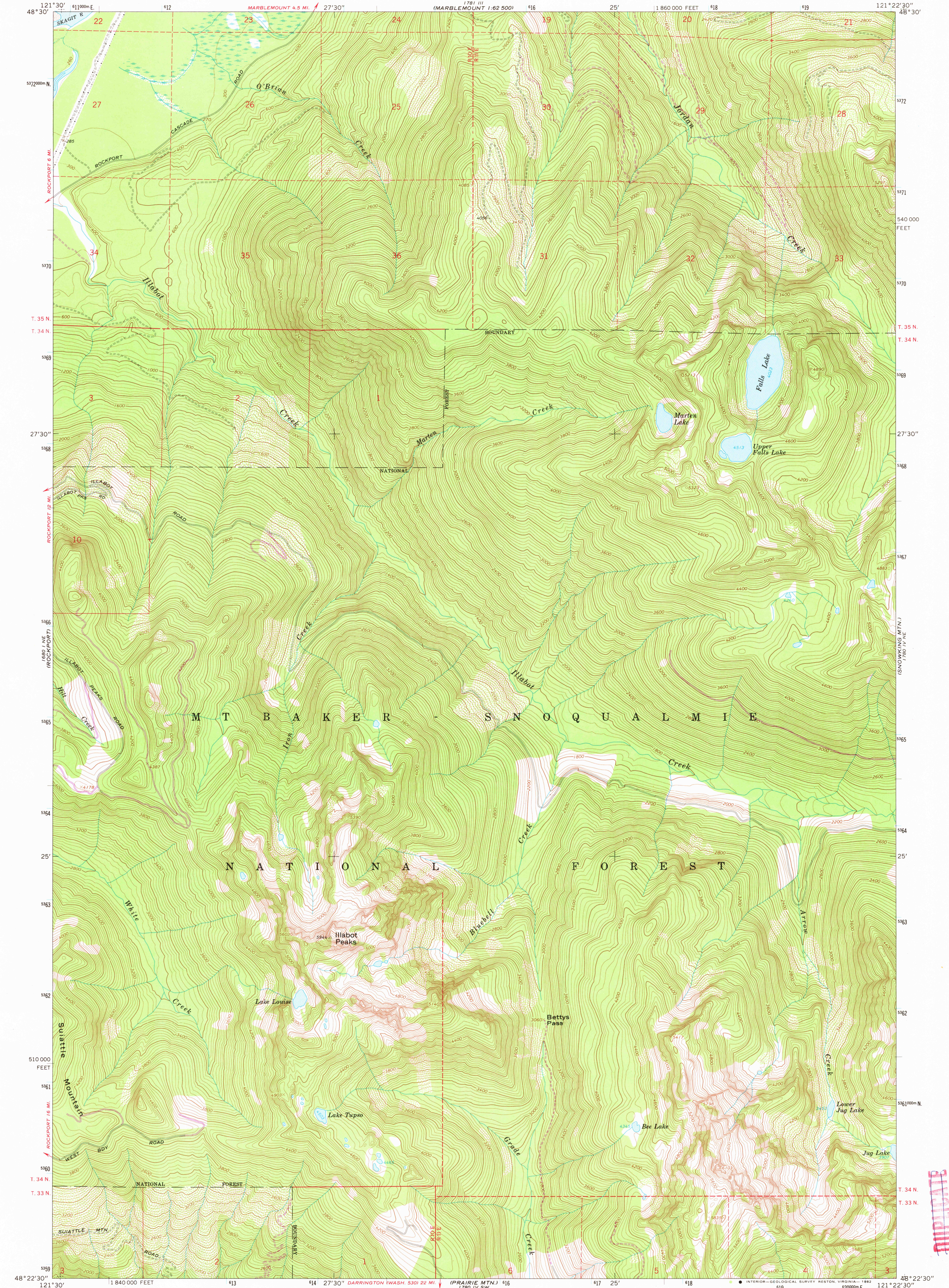
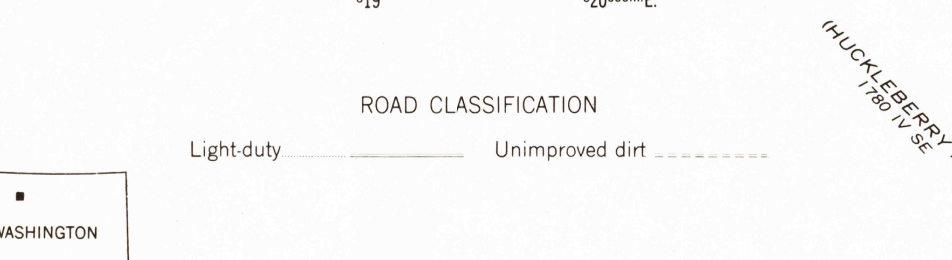
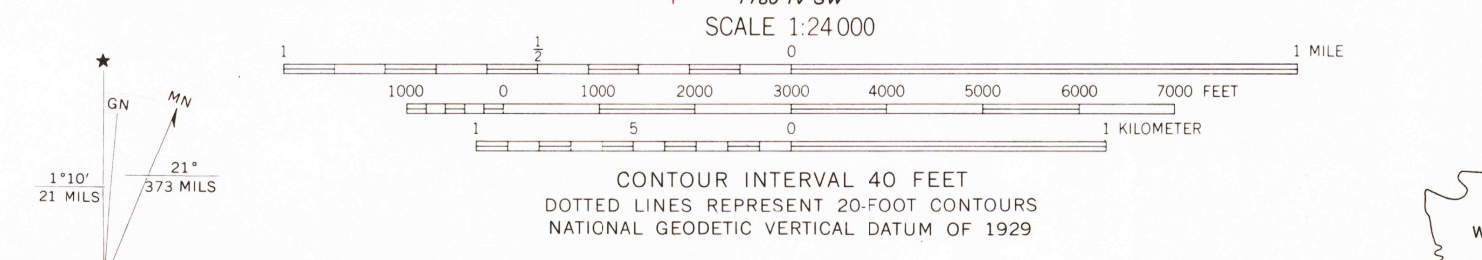


LAKE 1981 II
1:62,500

MARBLE MOUNT
1:62,500



Maped, edited, and published by the Geological Survey
Control by USGS and NOS/NOAA
Topography by photogrammetric methods from aerial
photographs taken 1963. Field checked 1966
Polyconic projection. 1927 North American datum
10,000-foot grid based on Washington coordinate system,
north zone
1000-meter Universal Transverse Mercator grid ticks
zone 10, shown in blue
To place on the predicted North American Datum 1983
move the projection lines 22 meters north and
91 meters east as shown by dashed corner ticks
Where omitted, land lines have not been established
There may be private inholdings within the boundaries of
the National or State reservations shown on this map



ILLABOT PEAKS, WASH.
N4822.5-W12122.5/7.5
1966
PHOTOREVISED 1982
DMA 1780 IV NW-SERIES V891

DUPLICATE

REFER TO:
NEW AND HISTORICAL MAP ARCHIVES

JAN 10 1983

1950