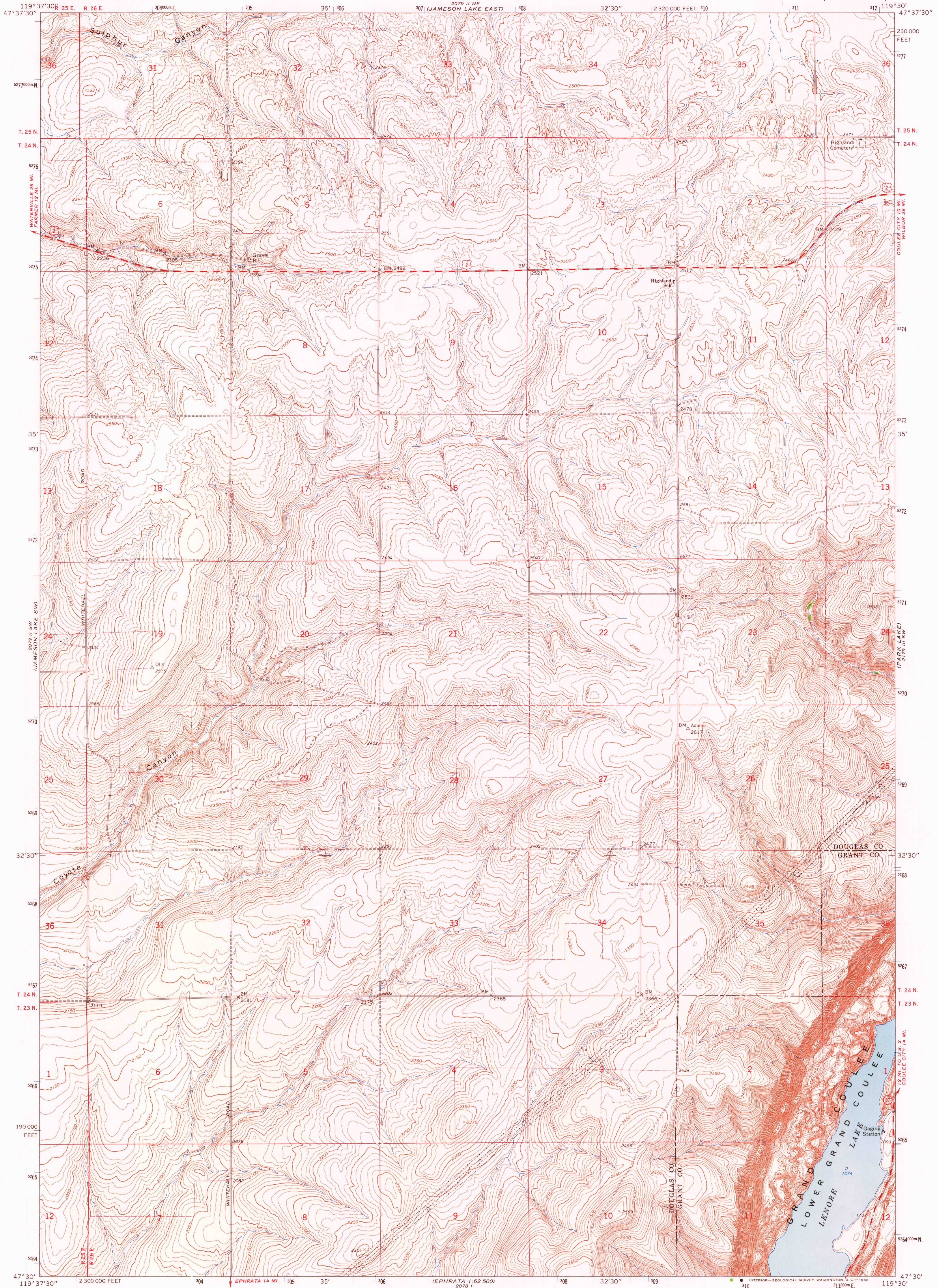


UNITED STATES
DEPARTMENT OF THE INTERIOR
GEOLOGICAL SURVEY

JAMESON LAKE SE QUADRANGLE
WASHINGTON
7.5 MINUTE SERIES (TOPOGRAPHIC)



Mapped, edited, and published by the Geological Survey

Control by USGS and USC&GS

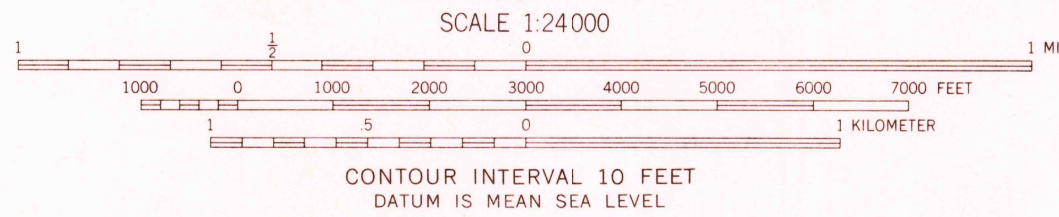
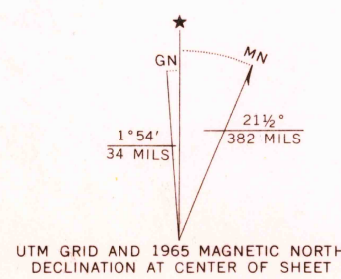
Topography by photogrammetric methods from aerial photographs taken 1962. Field checked 1965

Polyconic projection. 1927 North American datum 10,000-foot grid based on Washington coordinate system, north zone

1000-meter Universal Transverse Mercator grid ticks, zone 11, shown in blue

Where omitted, land lines have not been established

Fine red dashed lines indicate selected fence lines



JAMESON LAKE SE, WASH.
N4730—W11930/7.5

1965

AMS 2079 II SE—SERIES V891

THIS MAP COMPLIES WITH NATIONAL MAP ACCURACY STANDARDS
FOR SALE BY U.S. GEOLOGICAL SURVEY, DENVER, COLORADO 80225, OR WASHINGTON, D.C. 20242
A FOLDER DESCRIBING TOPOGRAPHIC MAPS AND SYMBOLS IS AVAILABLE ON REQUEST

U.S.G.S.
NOV 25 1965
2760
FINE COPY
TOPOGRAPHIC DIVISION