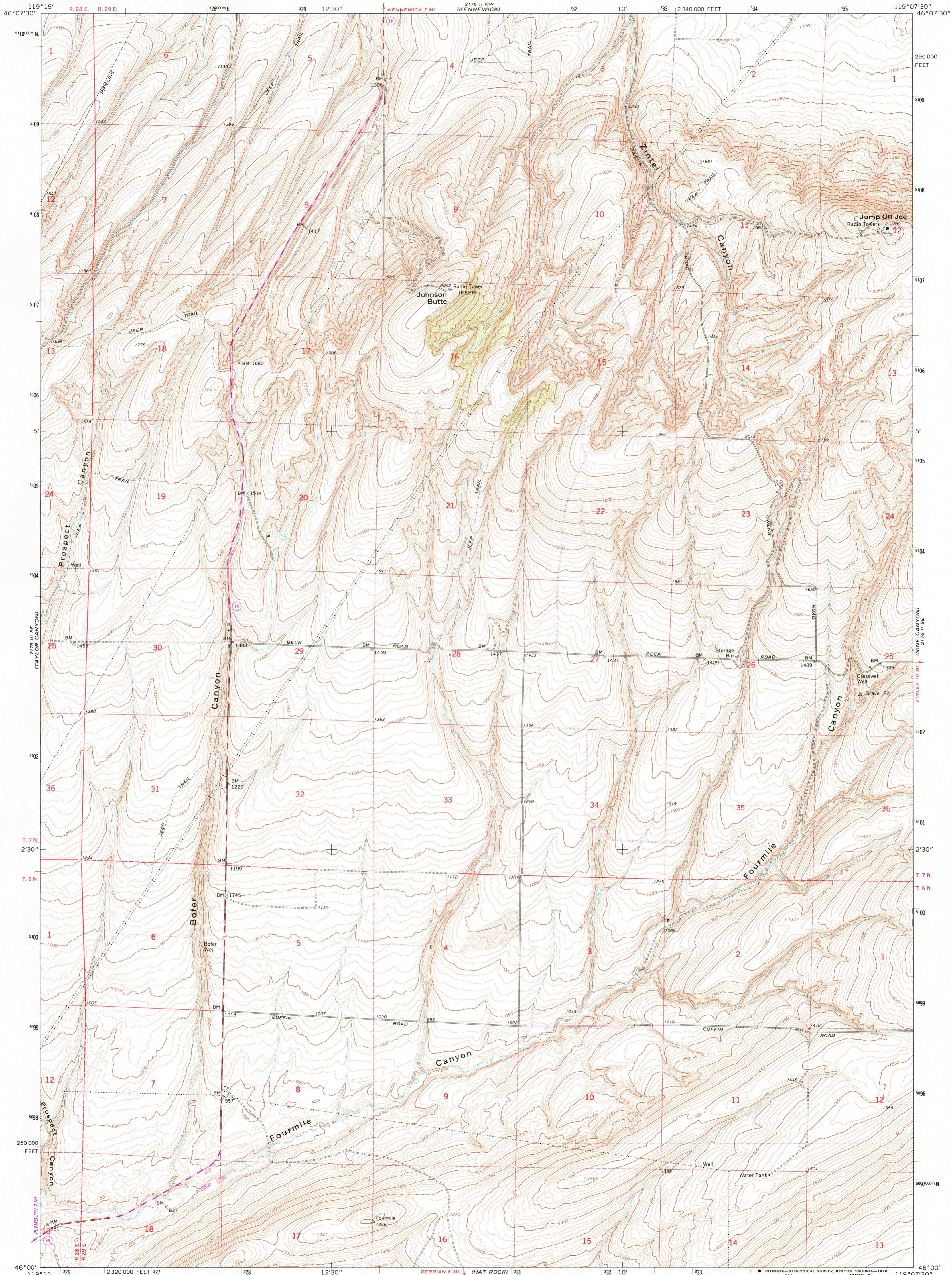


UNITED STATES
DEPARTMENT OF THE INTERIOR
GEOLOGICAL SURVEY

JOHNSON BUTTE QUADRANGLE
WASHINGTON - BENTON CO.
7.5 MINUTE SERIES (TOPOGRAPHIC)
SW/4 PASCO 15' QUADRANGLE



Mapped, edited, and published by the Geological Survey

Control by USGS and NOS/NOAA

Topography by photogrammetric methods from aerial photographs taken 1959. Field checked 1964

Polycyclic projection. 1927 North American datum

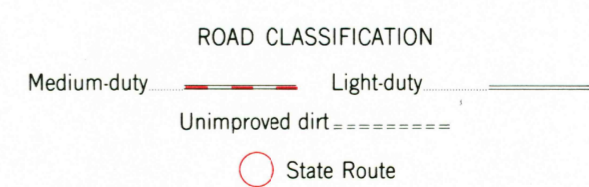
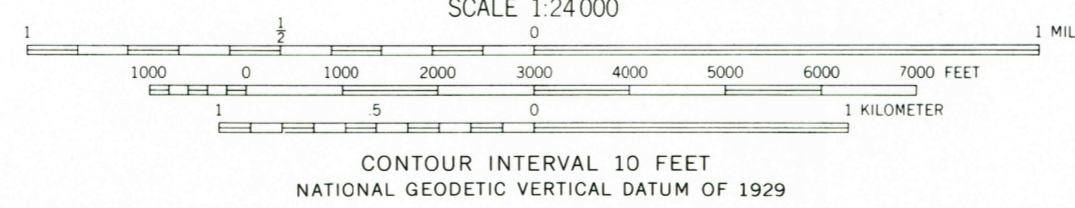
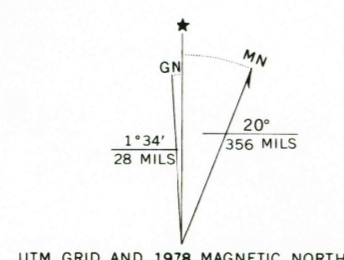
10,000-foot grid based on Washington coordinate system, south zone

1000-meter Universal Transverse Mercator grid ticks, zone 11, shown in blue

Fine red dashed lines indicate selected fence lines

Revisions shown in purple compiled from aerial photographs taken 1976. This information not field checked

Map edited 1978



JOHNSON BUTTE, WASH.
SW/4 PASCO 15' QUADRANGLE
N4600-W11907.5/7.5

USGS
Historical File
Topographic Division

1964
PHOTOREVISED 1978
AMS 2176 II SW - SERIES V891

OCT 3 1 1978

3100

THIS MAP COMPLIES WITH NATIONAL MAP ACCURACY STANDARDS
FOR SALE BY U. S. GEOLOGICAL SURVEY, DENVER, COLORADO 80225, OR RESTON, VIRGINIA 22092
A FOLDER DESCRIBING TOPOGRAPHIC MAPS AND SYMBOLS IS AVAILABLE ON REQUEST