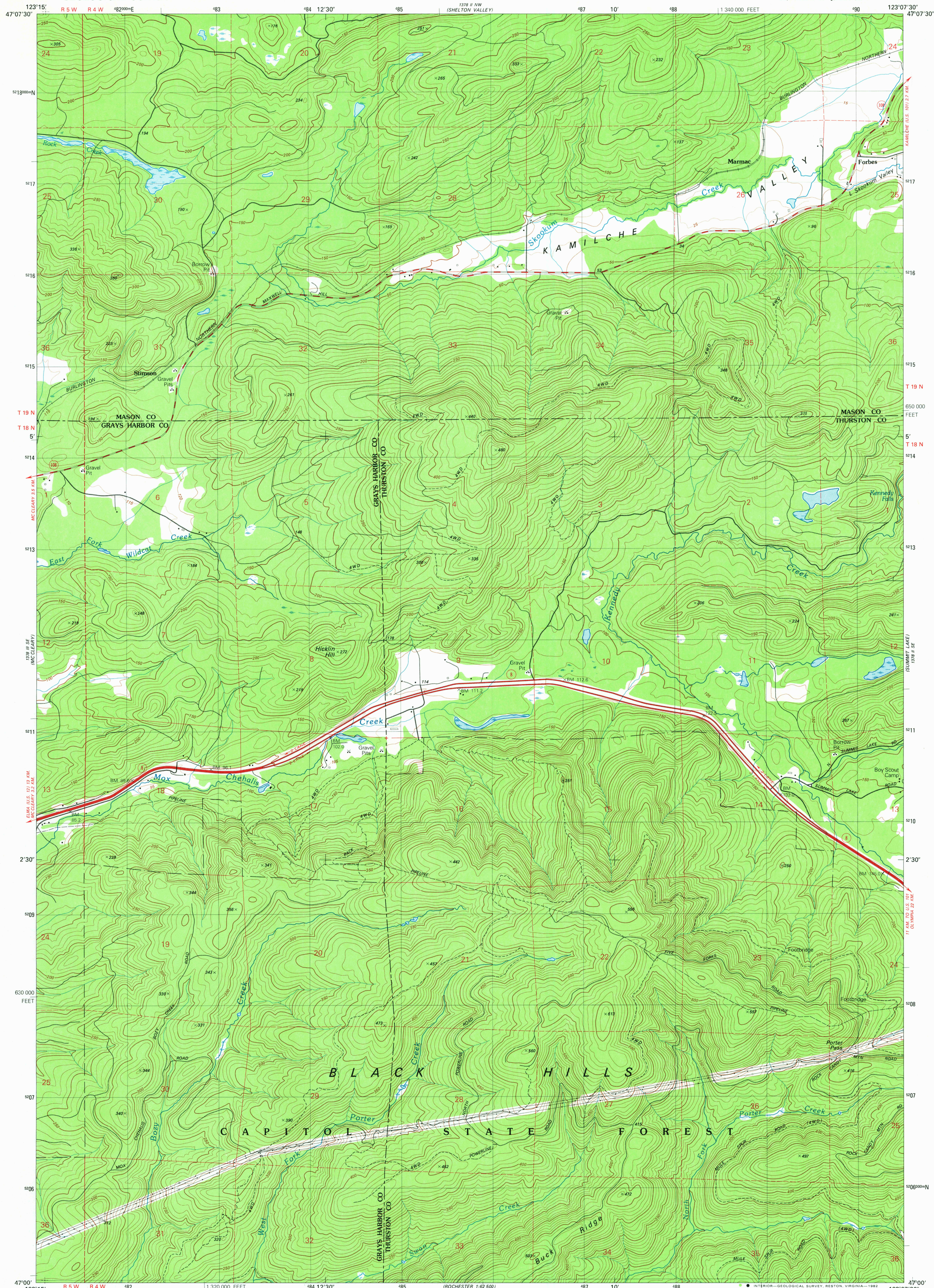


UNITED STATES  
DEPARTMENT OF THE INTERIOR  
GEOLOGICAL SURVEY

KAMILCHE VALLEY QUADRANGLE  
WASHINGTON  
7.5 MINUTE SERIES (TOPOGRAPHIC)

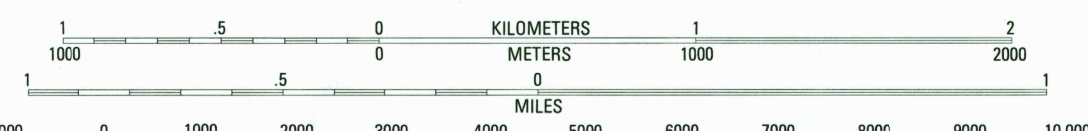


Produced by the United States Geological Survey

Control by USGS and NOS/NOAA  
Compiled by photogrammetric methods from aerial photographs taken 1973. Field checked 1975  
Map edited 1981

Projection and 10,000-foot grid ticks: Washington coordinate system, south zone (Lambert conformal conic)  
1000-meter Universal Transverse Mercator grid, zone 10  
1927 North American Datum  
To place on the predicted North American Datum 1983 move the projection lines 24 meters north and 95 meters east as shown by dashed corner ticks  
There may be private inholdings within the boundaries of the National or State reservations shown on this map

SCALE 1:24 000



CONTOUR INTERVAL 10 METERS  
SUPPLEMENTARY CONTOUR INTERVAL 5 METERS  
NATIONAL GEODETIC VERTICAL DATUM OF 1929  
CONTROL ELEVATIONS SHOWN TO THE NEAREST 0.1 METER  
OTHER ELEVATIONS SHOWN TO THE NEAREST METER  
TO CONVERT FEET TO METERS MULTIPLY BY 3048  
TO CONVERT METERS TO FEET MULTIPLY BY 3.2808

THIS MAP COMPLIES WITH NATIONAL MAP ACCURACY STANDARDS  
FOR SALE BY U. S. GEOLOGICAL SURVEY, DENVER, COLORADO 80225, OR RESTON, VIRGINIA 22092  
A FOLDER DESCRIBING TOPOGRAPHIC MAPS AND SYMBOLS IS AVAILABLE ON REQUEST

ROAD CLASSIFICATION

- Primary highway, hard surface . . . . .
- Secondary highway, hard surface . . . . .
- Interstate Route
- U. S. Route
- State Route
- Light-duty road, hard or improved surface . . . . .
- Unimproved road . . . . .



CONTOURS AND ELEVATIONS IN METERS

KAMILCHE VALLEY, WASH.

SW 1/4 SHELTON 15' QUADRANGLE  
N4700-W12307.5/7.5

1981

DMA 1378 II SW-SERIES V891

23d