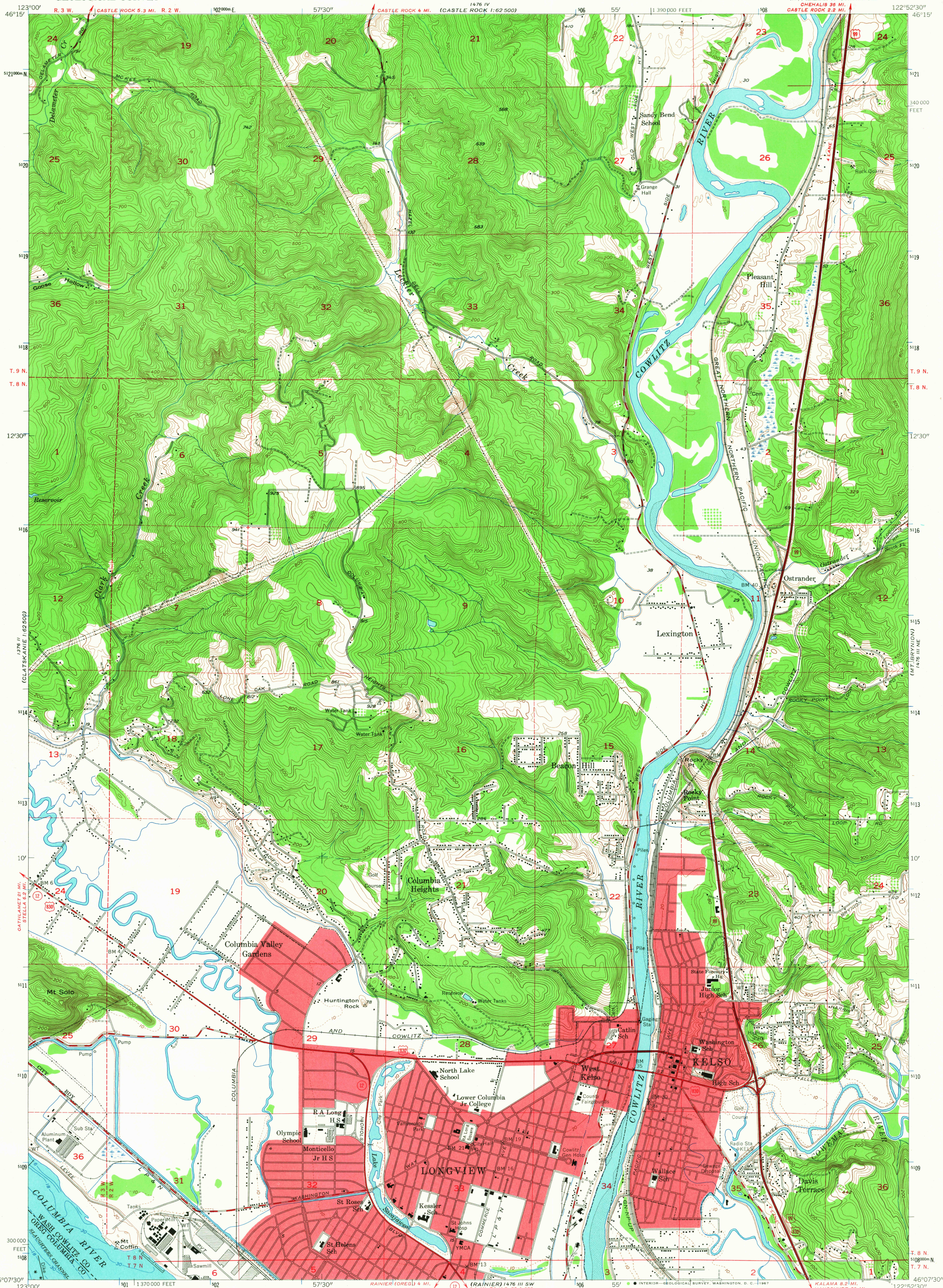


UNITED STATES
DEPARTMENT OF THE INTERIOR
GEOLOGICAL SURVEY

KELSO QUADRANGLE
WASHINGTON—OREGON
7.5 MINUTE SERIES (TOPOGRAPHIC)
NW 1/4 KALAMA 15' QUADRANGLE
CHEHALIS 36 MI.
CASTLE ROCK 2.2 MI.



Mapped, edited, and published by the Geological Survey

Control by USGS and USC&GS

Topography from aerial photographs by Kelsh plotter methods and by plane-table surveys 1930 and 1953. Aerial photographs taken 1951

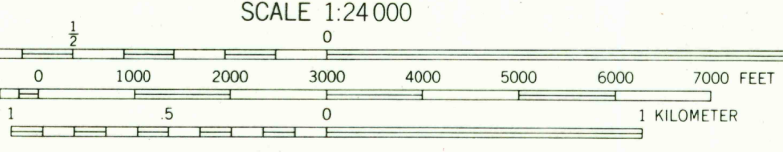
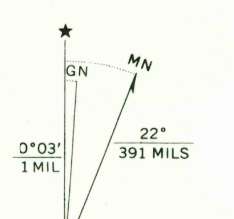
Hydrography compiled from USC&GS Chart 6153

Polyconic projection. 1927 North American datum
10,000-foot grid based on Washington coordinate system, south zone

Dashed land lines indicate approximate locations

Unchecked elevations are shown in brown

Red tint indicates areas in which only landmark buildings are shown
1000-meter Universal Transverse Mercator grid ticks,
zone 10, shown in blue



CONTOUR INTERVAL 20 FEET
DASHED LINES REPRESENT HALF INTERVAL CONTOURS
DATUM IS MEAN SEA LEVEL
DEPTH CURVES IN FEET—COLUMBIA RIVER DATUM
SHORELINE SHOWN REPRESENTS THE APPROXIMATE LINE OF MEAN HIGH WATER
THE AVERAGE RANGE OF TIDE IS APPROXIMATELY 5 FEET



ROAD CLASSIFICATION
Heavy-duty 4 LANE 6 LANE Light-duty
Medium-duty 4 LANE 6 LANE Unimproved dirt
U.S. Route State Route

KELSO, WASH.—OREG
NW 1/4 KALAMA 15' QUADRANGLE
N 4607.5—W 12252.5/7.5

1953

AMS 1476 III NW—SERIES V891

THIS MAP COMPLIES WITH NATIONAL MAP ACCURACY STANDARDS
FOR SALE BY U.S. GEOLOGICAL SURVEY, DENVER, COLORADO 80225, OR WASHINGTON, D.C. 20242
A FOLDER DESCRIBING TOPOGRAPHIC MAPS AND SYMBOLS IS AVAILABLE ON REQUEST

2675
OCT 11 1967