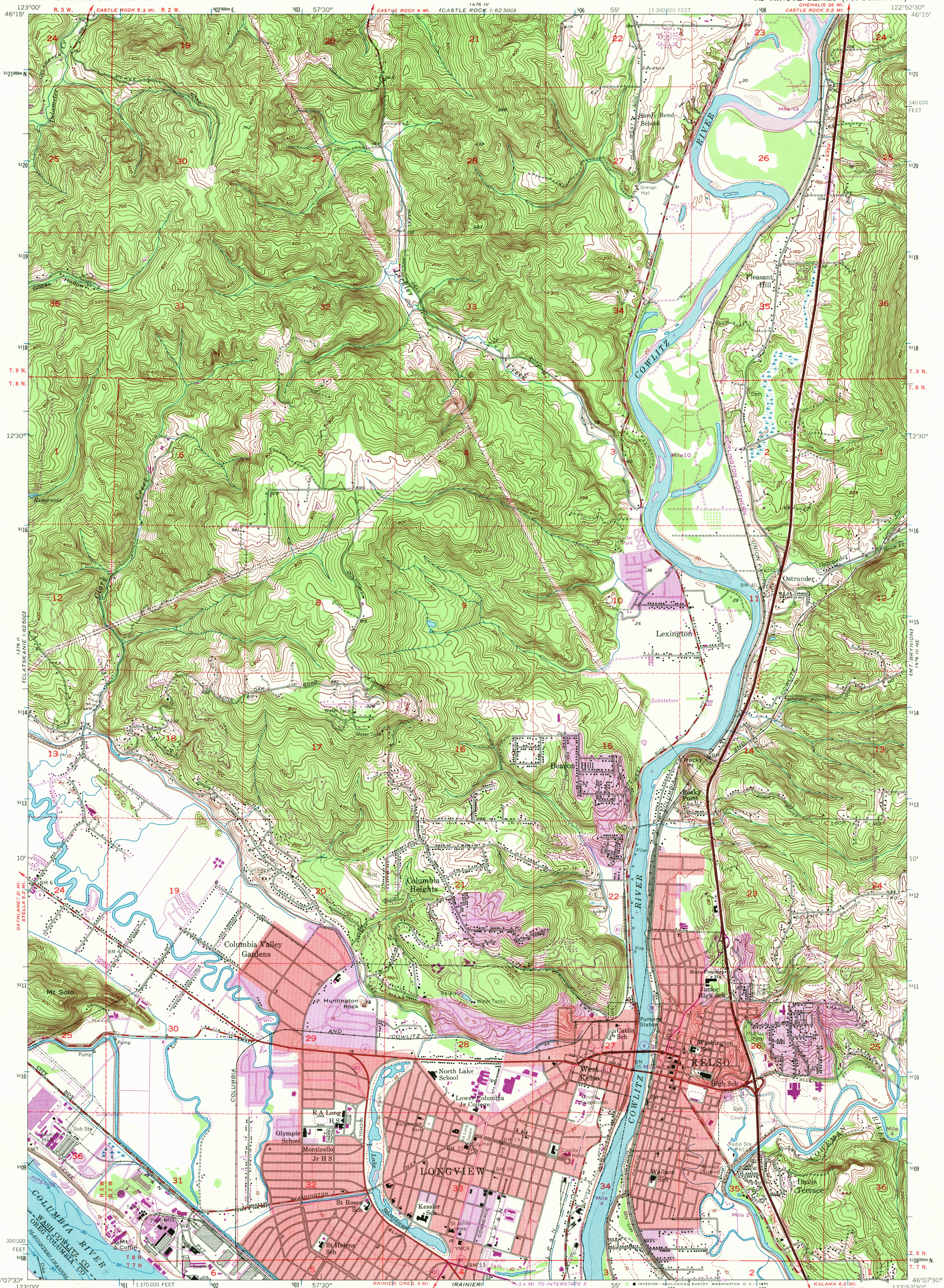


UNITED STATES  
DEPARTMENT OF THE INTERIOR  
GEOLOGICAL SURVEY

KELSO QUADRANGLE  
WASHINGTON—OREGON  
7.5 MINUTE SERIES (TOPOGRAPHIC)



Mapped, edited, and published by the Geological Survey

Control by USGS and USC&GS

Topography from aerial photographs by Kelsh plotter methods and by plane-table surveys 1930 and 1953. Aerial photographs taken 1951

Hydrography compiled from USC&GS Chart 6153

Polyconic projection. 1927 North American datum

10,000-foot grid based on Washington coordinate system, south zone

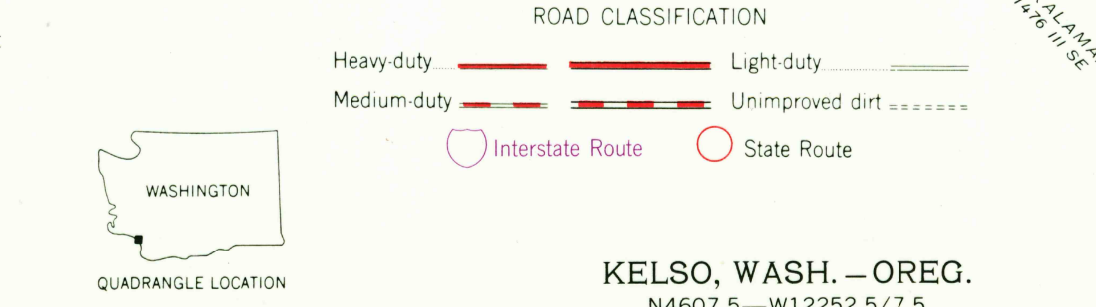
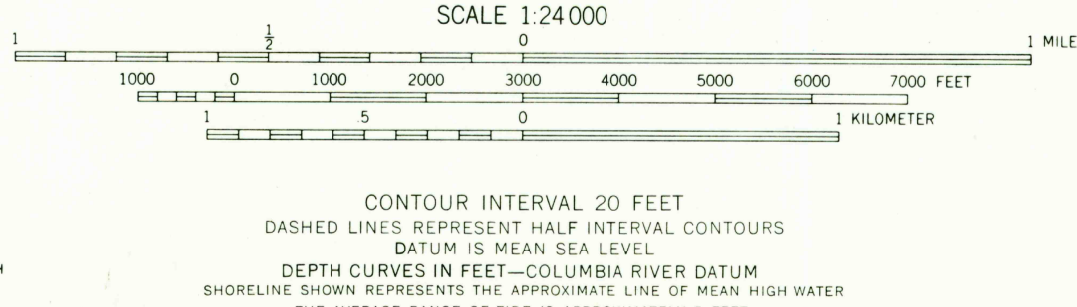
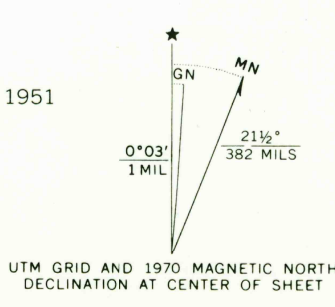
Dashed land lines indicate approximate locations

Unchecked elevations are shown in brown

Red tint indicates areas in which only landmark buildings are shown

1000-meter Universal Transverse Mercator grid ticks, zone 10, shown in blue

Purple tint indicates extension of urban areas



THIS MAP COMPLIES WITH NATIONAL MAP ACCURACY STANDARDS  
FOR SALE BY U. S. GEOLOGICAL SURVEY, DENVER, COLORADO 80225, OR WASHINGTON, D. C. 20242  
A FOLDER DESCRIBING TOPOGRAPHIC MAPS AND SYMBOLS IS AVAILABLE ON REQUEST

Revisions shown in purple compiled from aerial photographs taken 1970. This information not field checked

KELSO, WASH.—OREG.  
N4607.5—W12252.5/7.5

1953  
PHOTOREVISED 1970  
AMS 1476 III NW—SERIES V891

USGS  
HISTORICAL FILE  
TOPOGRAPHIC DIVISION  
3790

NOV 1 1971