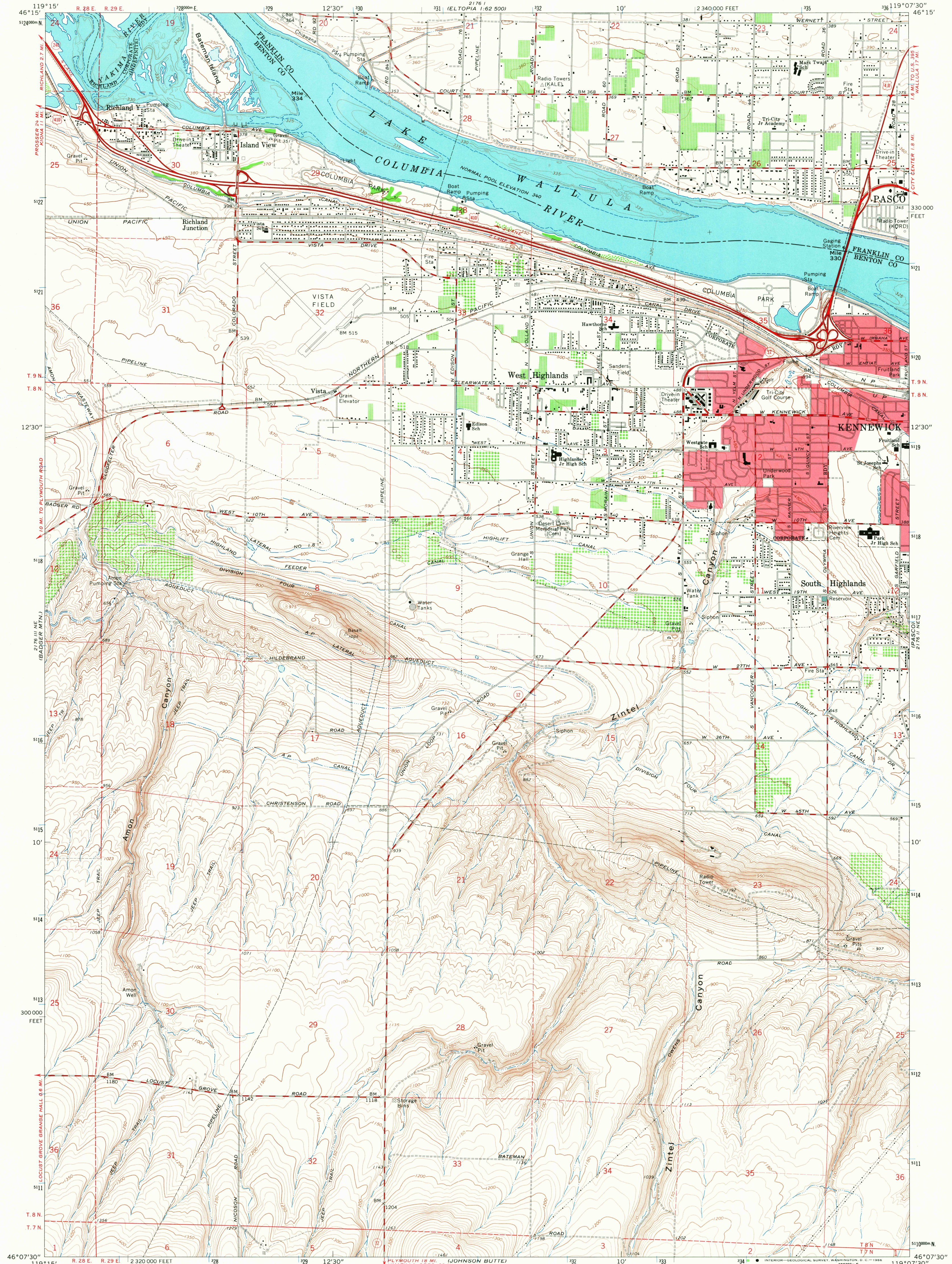


UNITED STATES
DEPARTMENT OF THE INTERIOR
GEOLOGICAL SURVEY

KENNEWICK QUADRANGLE
WASHINGTON
7.5 MINUTE SERIES (TOPOGRAPHIC)
NW/4 PASCO 15' QUADRANGLE



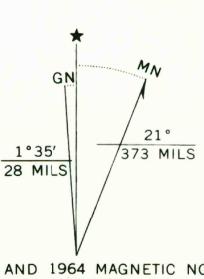
Mapped, edited, and published by the Geological Survey

Control by USGS and USC&GS

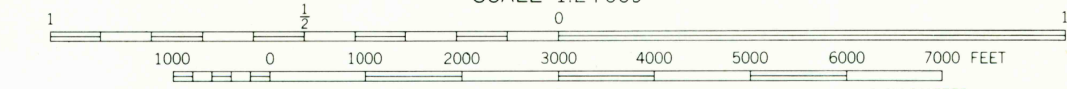
Topography by photogrammetric methods from aerial photographs taken 1959. Field checked 1964. Underwater contours by USCE

Polyconic projection. 1927 North American datum. 10,000-foot grid based on Washington coordinate system, south zone. 1000-meter Universal Transverse Mercator grid ticks, zone 11, shown in blue.

Red tint indicates areas in which only landmark buildings are shown. Fine red dashed lines indicate selected fence lines.



UTM GRID AND 1964 MAGNETIC NORTH DECLINATION AT CENTER OF SHEET



CONTOUR INTERVAL 10 FEET
DOTTED LINES REPRESENT 5-FOOT CONTOURS
DATUM IS MEAN SEA LEVEL



ROAD CLASSIFICATION
Heavy-duty ——— Light-duty ———
Medium-duty ——— Unimproved dirt ———
U.S. Route ——— State Route ———

THIS MAP COMPLIES WITH NATIONAL MAP ACCURACY STANDARDS
FOR SALE BY U.S. GEOLOGICAL SURVEY, DENVER, COLORADO 80225, OR WASHINGTON, D.C. 20242
A FOLDER DESCRIBING TOPOGRAPHIC MAPS AND SYMBOLS IS AVAILABLE ON REQUEST

U.S.G.S. KENNEWICK, WASH.
NW/4 PASCO 15' QUADRANGLE
N4607.5—W11907.5/7.5
1964
TOPOGRAPHIC DIVISION
AMS 2176 II NW—SERIES V891

3375
FEB 1 1967