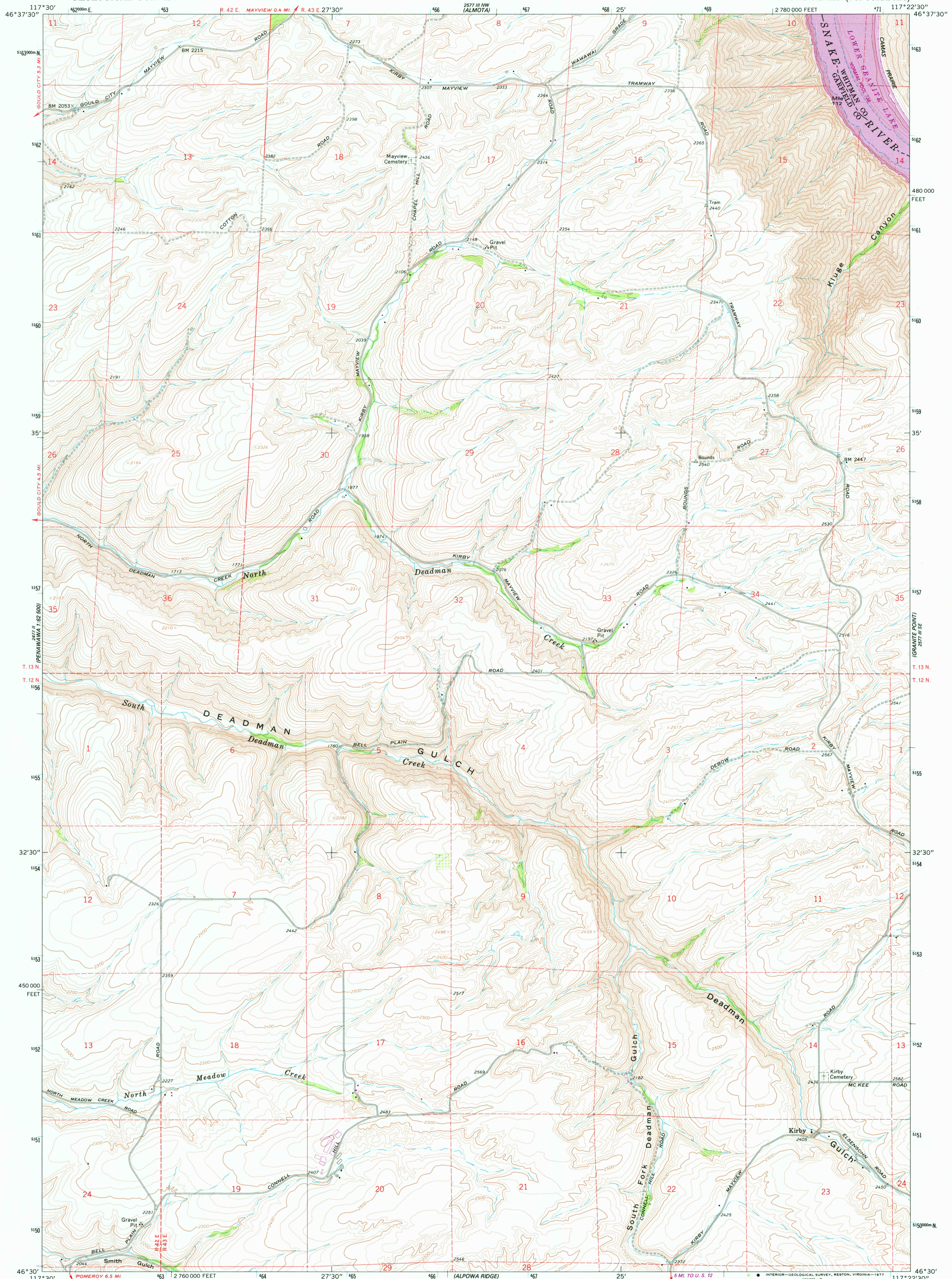


UNITED STATES
DEPARTMENT OF THE INTERIOR
GEOLOGICAL SURVEY

KIRBY QUADRANGLE
WASHINGTON
7.5 MINUTE SERIES (TOPOGRAPHIC)



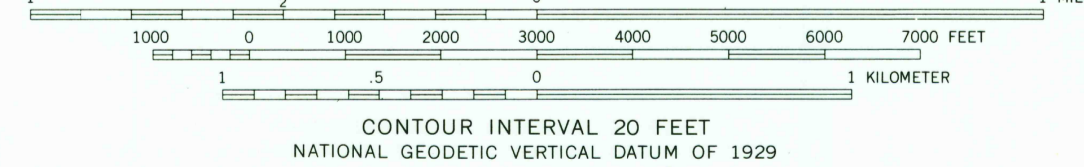
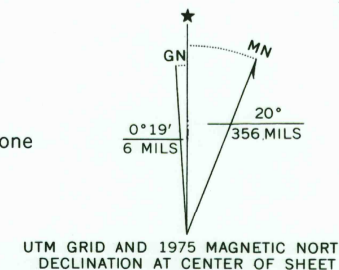
Mapped, edited, and published by the Geological Survey
Control by USGS and NOS/NOAA

Topography by photogrammetric methods from aerial
photographs taken 1946, 1957, and 1961. Field checked 1964

Polyconic projection. 1927 North American datum
10,000-foot grid based on Washington coordinate system, south zone
1000-meter Universal Transverse Mercator grid ticks,
zone 11, shown in blue

Fine red dashed lines indicate selected fence lines

Revisions shown in purple compiled from aerial photographs
taken 1975. This information not field checked



ROAD CLASSIFICATION
Light-duty Unimproved dirt

USGS
Historical File
Topographic Division

KIRBY, WASH.
N4630-W11722.5/7.5
1964
PHOTOREVISED 1975
AMS 2577 III SW—SERIES V991

MAR 15 1978