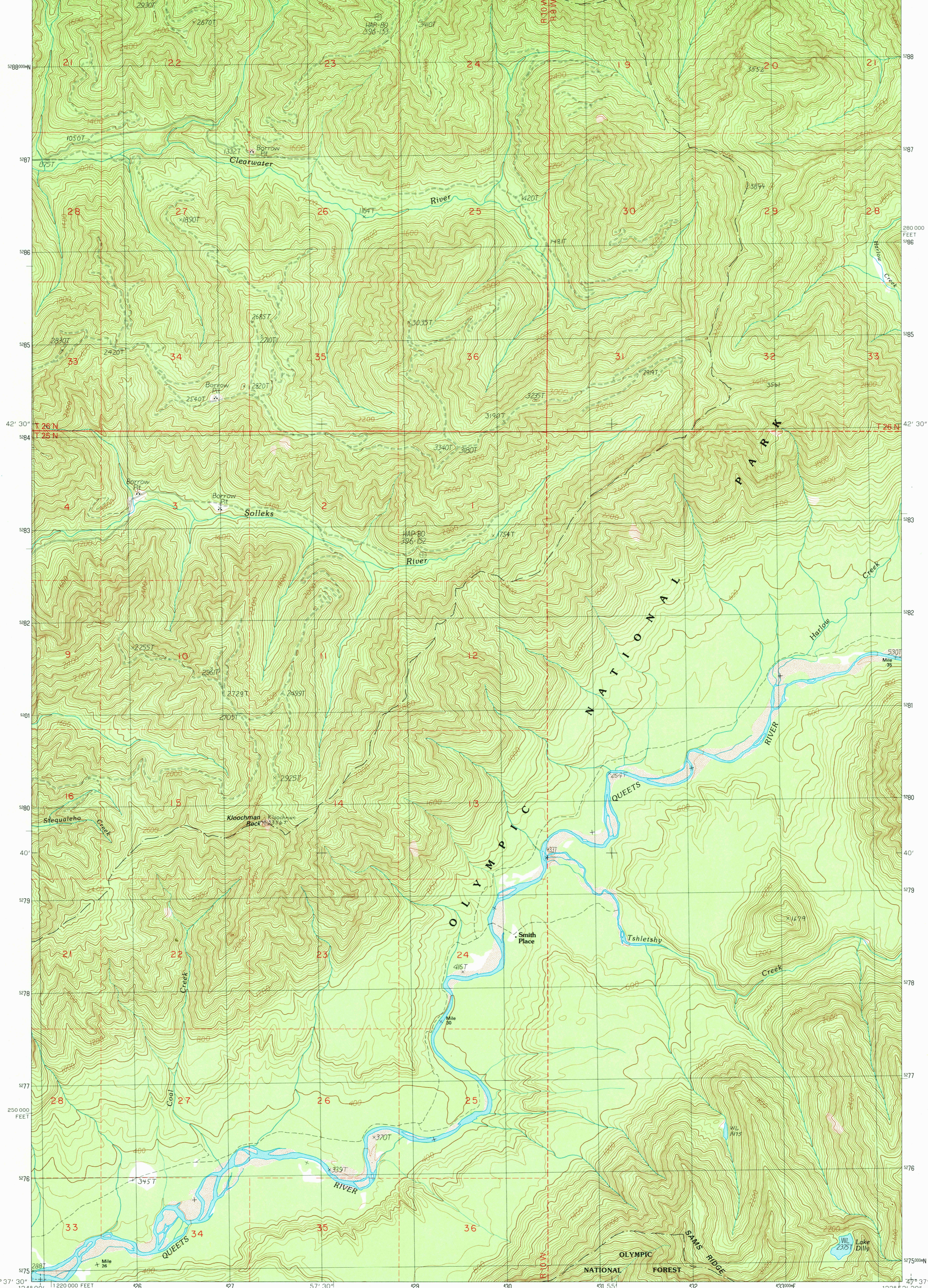


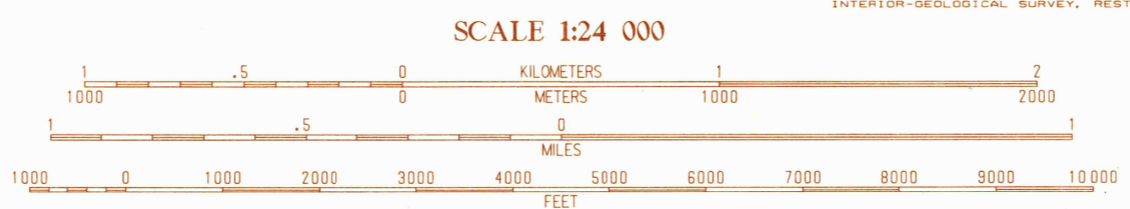
124° 00' 47" 45" 126° 00' E 27 57' 30" 28 90 31 55' 32 1250 000 FEET 34 123° 52' 30" 47° 45'



USGS NMD HISTORICAL MAP
JUL 27, 1990
REC'D FILE COPY

PRODUCED BY THE UNITED STATES GEOLOGICAL SURVEY
CONTROL BY USGS, NOS/NOAA
COMPILED FROM AERIAL PHOTOGRAPHS TAKEN 1985 AND 1987
FIELD CHECKED 1986
PROJECTION LAMBERT CONFORMAL CONIC
GRID: 1000-METER UNIVERSAL TRANSVERSE MERCATOR ZONE 10
10000-FOOT STATE GRID TICKS WASHINGTON, NORTH ZONE
UTM GRID DECLINATION 0°42' WEST
1990 MAGNETIC NORTH DECLINATION 20' EAST
VERTICAL DATUM NATIONAL GEODETIC VERTICAL DATUM OF 1929
HORIZONTAL DATUM 1927 NORTH AMERICAN DATUM
To place on the predicted North American Datum of 1983,
move the projection lines as shown by dashed corner ticks
(25 meters north and 97 meters east)
There may be private inholdings within the boundaries of any
Federal and State Reservations shown on this map
No distinction made between houses, barns, and other buildings
Where omitted, land lines have not been established

PROVISIONAL MAP
Produced from original
manuscript drawings. Informa-
tion shown as of date of
photography.



CONTOUR INTERVAL 40 FEET
To convert feet to meters multiply by .3048
To convert meters to feet multiply by 3.2808

QUADRANGLE LOCATION

1	2	3	1 Spruce Mountain
4	5	4	2 Owl Mountain
6	7	8	3 Mount Tom
			4 Stequieho Creek
			5 Bok Creek
			6 Salmon River East
			7 Matheny Ridge
			8 Finley Creek

ADJOINING 7.5' QUADRANGLE NAMES

FOR SALE BY U.S. GEOLOGICAL SURVEY, DENVER COLORADO 80225
OR RESTON, VIRGINIA 22092

KLOOCHMAN ROCK, WASHINGTON
PROVISIONAL EDITION 1990

47123-F8-TT-024