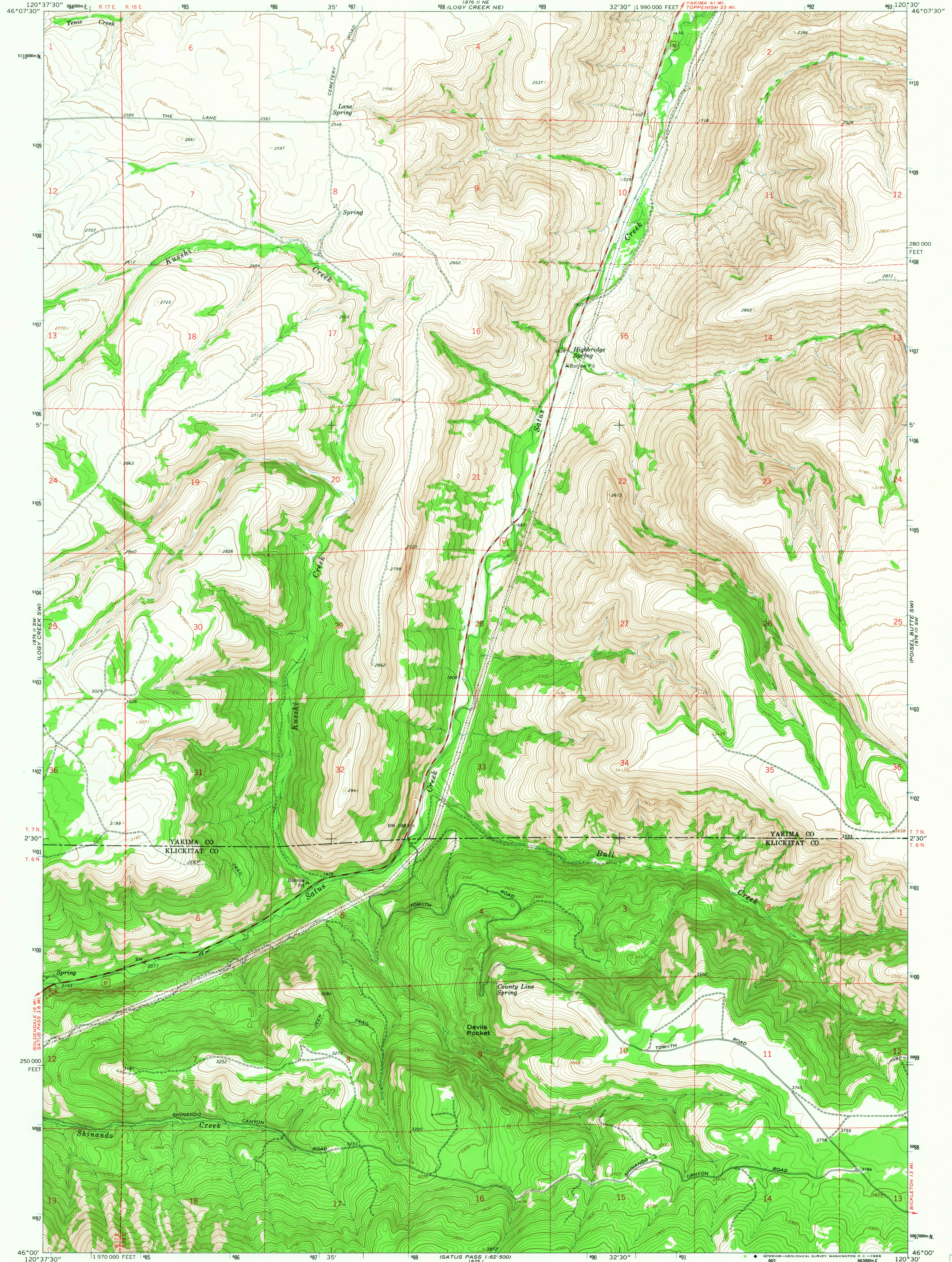


UNITED STATES  
DEPARTMENT OF THE INTERIOR  
GEOLOGICAL SURVEY

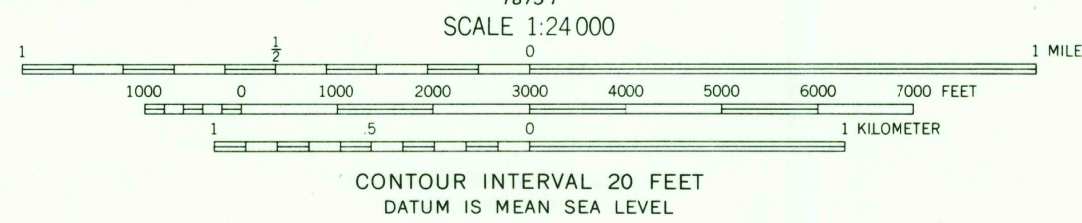
KUSSHI CREEK QUADRANGLE  
WASHINGTON  
7.5 MINUTE SERIES (TOPOGRAPHIC)  
SE/4 LOGY CREEK 15' QUADRANGLE



Mapped, edited, and published by the Geological Survey  
Control by USGS and USC&GS  
Topography by photogrammetric methods from aerial  
photographs taken 1964. Field checked 1965  
Polyconic projection. 1927 North American datum  
10,000-foot grid based on Washington coordinate system,  
south zone  
1000-meter Universal Transverse Mercator grid ticks,  
zone 10, shown in blue



UTM GRID AND 1965 MAGNETIC NORTH  
DECLINATION AT CENTER OF SHEET



ROAD CLASSIFICATION

Heavy-duty	Light-duty
Medium-duty	Unimproved dirt
U.S. Route	

KUSSHI CREEK, WASH.  
SE/4 LOGY CREEK 15' QUADRANGLE  
N4600-W12030/7.5

2685

NOV 21 1965

THIS MAP COMPLIES WITH NATIONAL MAP ACCURACY STANDARDS  
FOR SALE BY U.S. GEOLOGICAL SURVEY, DENVER, COLORADO 80225, OR WASHINGTON, D.C. 20242  
A FOLDER DESCRIBING TOPOGRAPHIC MAPS AND SYMBOLS IS AVAILABLE ON REQUEST

1965  
AMS 1876 II SE-SERIES V891

U.S.G.S.  
FINE COPY  
TOPOGRAPHIC DIVISION