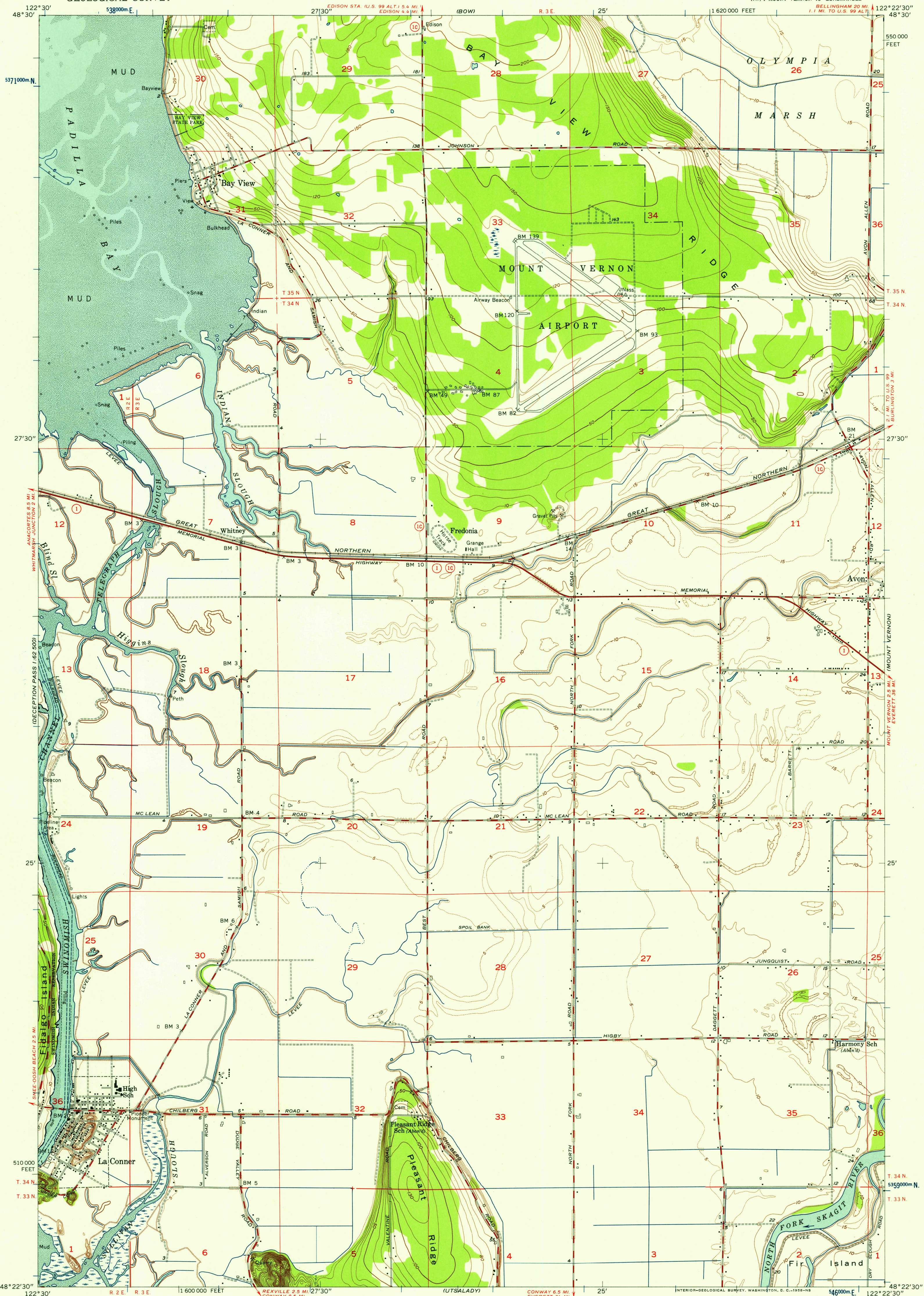


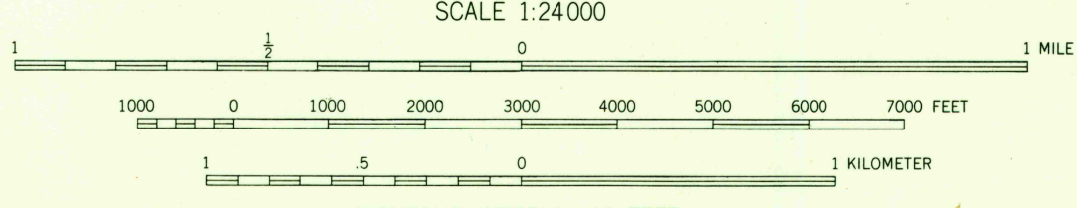
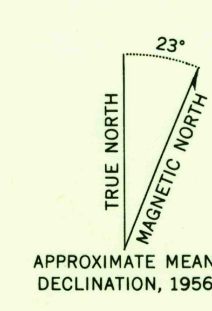
ANACORTES 1:62,500

UNITED STATES DEPARTMENT OF THE INTERIOR GEOLOGICAL SURVEY

LA CONNER QUADRANGLE WASHINGTON-SKAGIT CO. 7.5 MINUTE SERIES (TOPOGRAPHIC)



Maped, edited, and published by the Geological Survey Control by USGS and USC&GS. Topography from aerial photographs by Kelsh plotter and by planetable surveys 1956. Aerial photographs taken 1954. Hydrography compiled from USC&GS chart 6376 (1954). Polyconic projection. 1927 North American datum. 10,000-foot grid based on Washington coordinate system, north zone. 1000-meter Universal Transverse Mercator grid ticks, zone 10, shown in blue.



CONTOUR INTERVAL 10 FEET. DASHED LINES REPRESENT 5-FOOT CONTOURS. DATUM IS MEAN SEA LEVEL. DEPTH CURVES IN FEET-DATUM IS MEAN LOWER LOW WATER. SHORELINE SHOWN REPRESENTS THE APPROXIMATE LINE OF MEAN HIGH WATER. THE MEAN RANGE OF TIDE IS APPROXIMATELY 5 FEET. THIS MAP COMPLIES WITH NATIONAL MAP ACCURACY STANDARDS. FOR SALE BY U. S. GEOLOGICAL SURVEY, DENVER 2, COLORADO OR WASHINGTON 25, D. C. A FOLDER DESCRIBING TOPOGRAPHIC MAPS AND SYMBOLS IS AVAILABLE ON REQUEST.

ROAD CLASSIFICATION table with symbols for Heavy-duty, Medium-duty, Light-duty, and Unimproved dirt roads, as well as State Route markers.

LA CONNER, WASH. NW/4 MOUNT VERNON 15' QUADRANGLE N4822.5-W1222.5/7.5

1956

U.S.G.S. FILE COPY TOPOGRAPHIC DIVISION

MAY 27 1958

2425