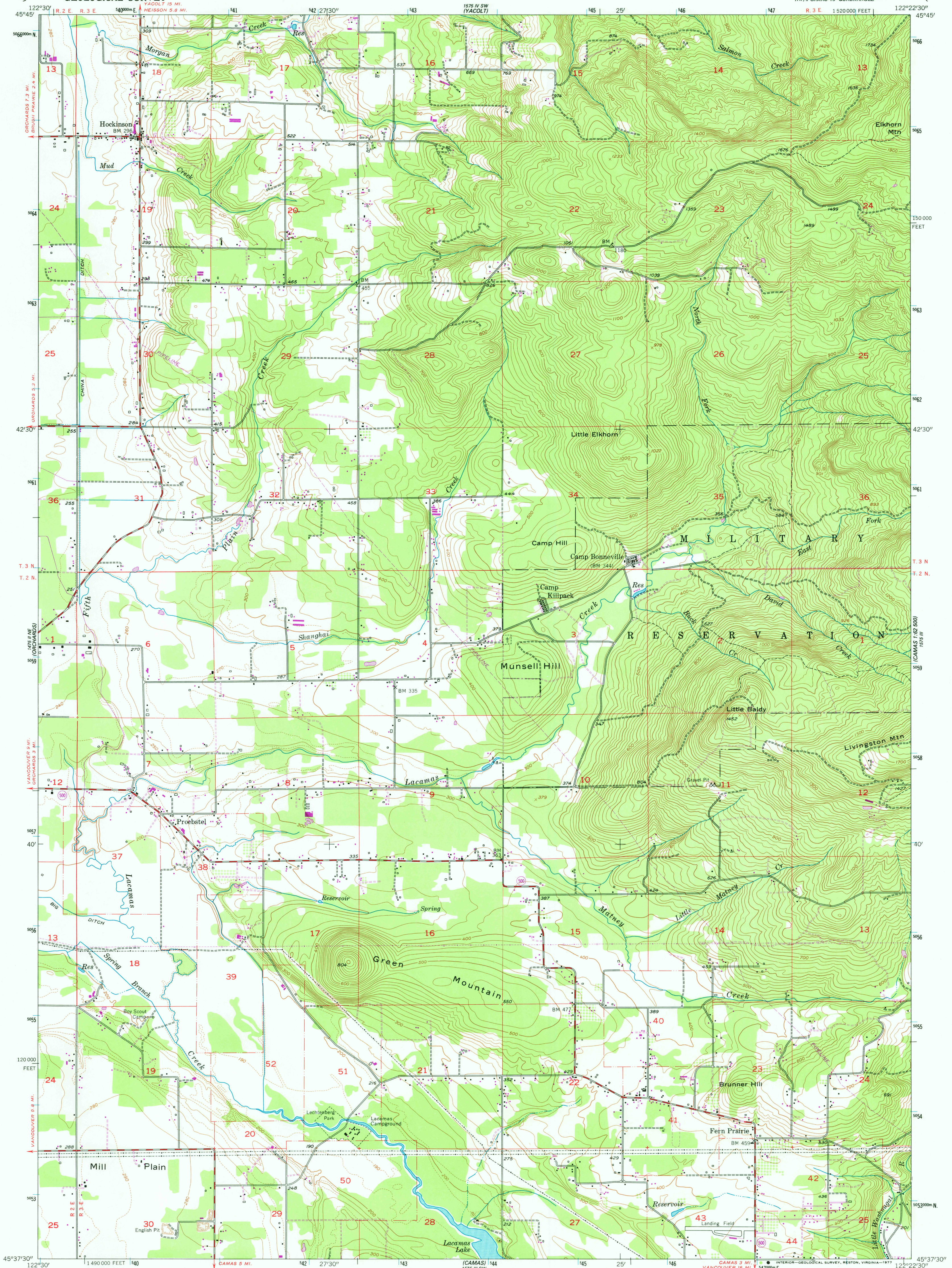


UNITED STATES
DEPARTMENT OF THE INTERIOR
GEOLOGICAL SURVEY

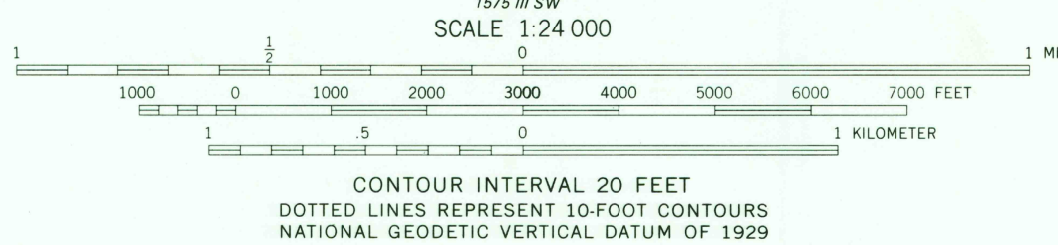
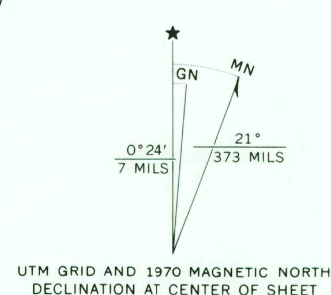
LACAMAS CREEK QUADRANGLE
WASHINGTON—CLARK CO.
7.5 MINUTE SERIES (TOPOGRAPHIC)
NW/4 CAMAS 15' QUADRANGLE



Mapped, edited, and published by the Geological Survey
Control by USGS and USCE

Topography from aerial photographs by photogrammetric methods
Aerial photographs taken 1951. Field check 1954
Polyconic projection. 1927 North American datum
10,000-foot grid based on Washington coordinate system,
south zone
1000-meter Universal Transverse Mercator grid ticks,
zone 10, shown in blue

Revisions shown in purple compiled from aerial photographs
taken 1970. This information not field checked
Map photorevised 1975
No major culture or drainage changes observed



THIS MAP COMPLIES WITH NATIONAL MAP ACCURACY STANDARDS
FOR SALE BY U. S. GEOLOGICAL SURVEY, DENVER, COLORADO 80225, OR RESTON, VIRGINIA 22092
A FOLDER DESCRIBING TOPOGRAPHIC MAPS AND SYMBOLS IS AVAILABLE ON REQUEST



USGS
Historical File
Topographic Division

ROAD CLASSIFICATION
Heavy-duty ——— Light-duty ———
Medium-duty ——— Unimproved dirt ———
State Route ———

LACAMAS CREEK, WASH.
NW/4 CAMAS 15' QUADRANGLE
N4537.5—W12222.5/7.5
PHOTOINSPECTED 1975
1954
PHOTOREVISED 1970
AMS 1575 III NW—SERIES V891

SEP 19 1977