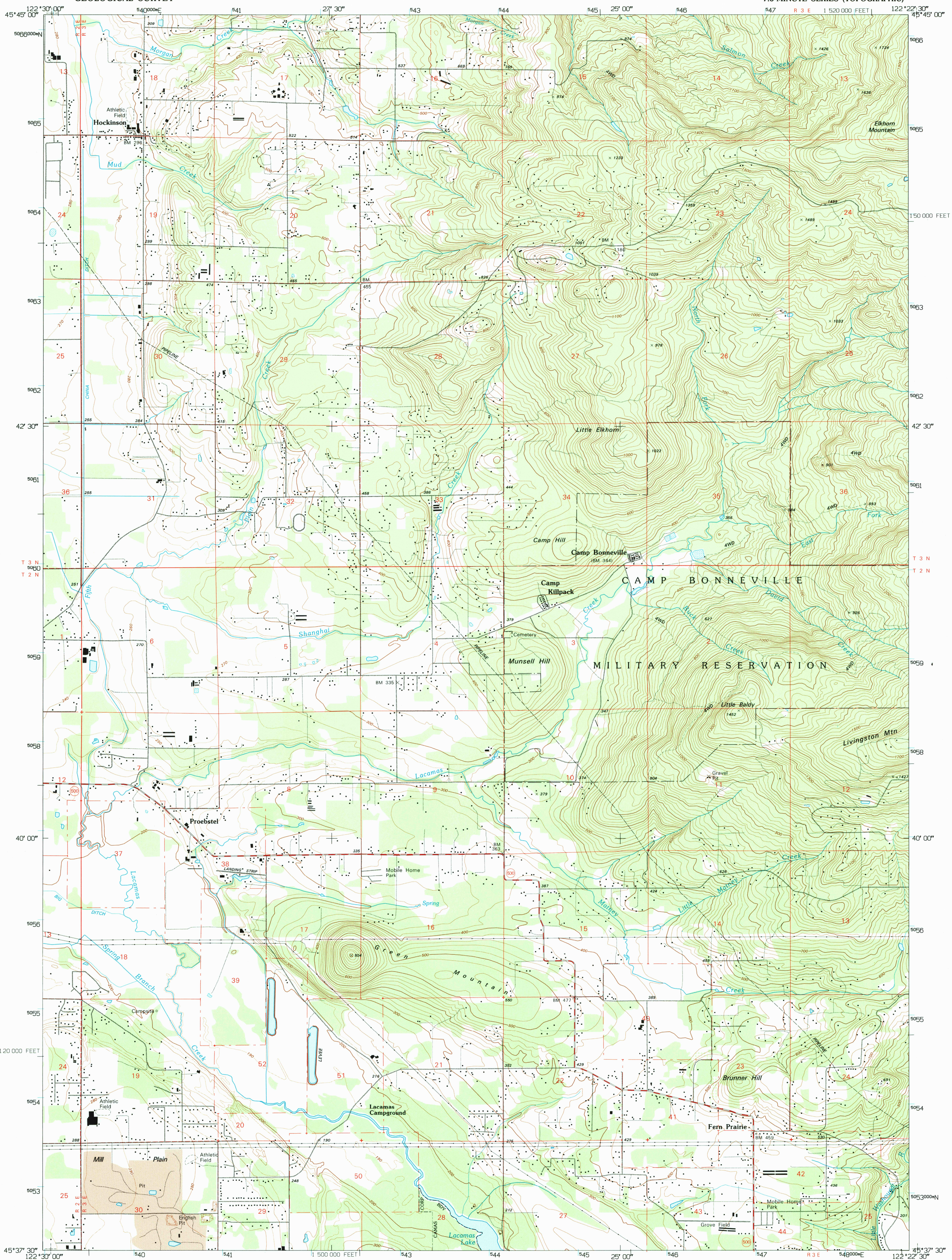


UNITED STATES
DEPARTMENT OF THE INTERIOR
GEOLOGICAL SURVEY

LACAMAS CREEK QUADRANGLE
WASHINGTON-CLARK CO.
7.5-MINUTE SERIES (TOPOGRAPHIC)



Produced by the United States Geological Survey
Control by USGS and NOS/NOAA
Compiled from imagery dated 1951. Revised from imagery
dated 1990. PLSS and survey control current as of 1954
Map edited 1995. Contours and land elevations have
not been revised and may conflict with other content
North American Datum of 1927 (NAD 27). Projection and
blue 1000-meter ticks: Universal Transverse Mercator, zone 10
10 000-foot ticks: Washington Coordinate System, south zone
North American Datum of 1983 (NAD 83) is shown by dashed
corner ticks. The values of the shift between NAD 27
and NAD 83 for 7.5-minute intersections are obtainable from
National Geodetic Survey NADCON software
There may be private inholdings within the boundaries of
the National or State reservations shown on this map

