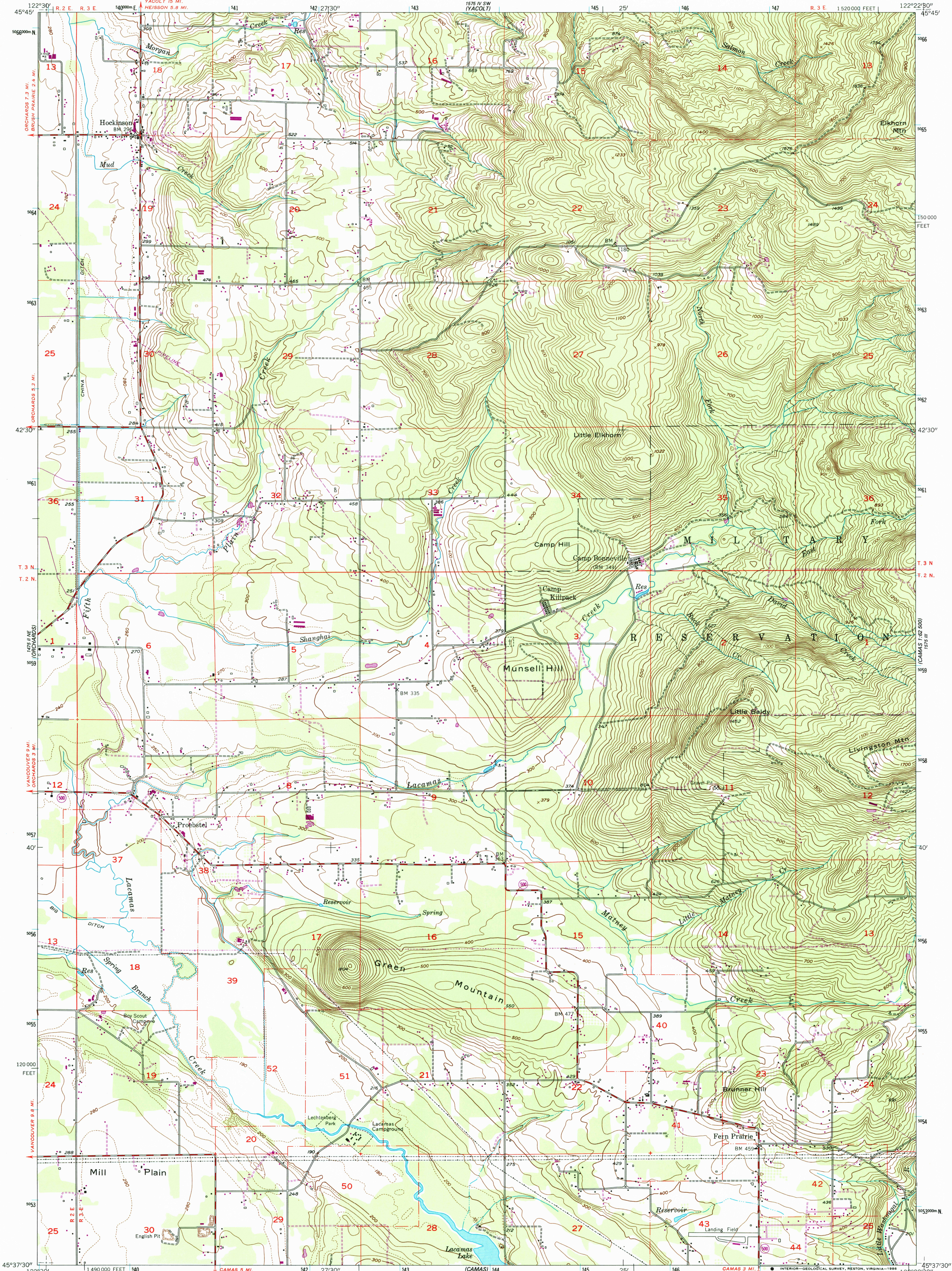


UNITED STATES  
DEPARTMENT OF THE INTERIOR  
GEOLOGICAL SURVEY

LACAMAS CREEK QUADRANGLE  
WASHINGTON—CLARK CO.  
7.5 MINUTE SERIES (TOPOGRAPHIC)  
NW/4 CAMAS 15' QUADRANGLE



Mapped, edited, and published by the Geological Survey

Control by USGS and USCE

Topography from aerial photographs by photogrammetric methods

Aerial photographs taken 1951. Field check 1954

Polyconic projection. 1927 North American datum

10,000-foot grid based on Washington coordinate system,

zone 10, shown in blue

To place on the predicted North American Datum 1983

move the projection lines 22 meters north and

93 meters east as shown by dashed corner ticks

There may be private inholdings within the boundaries of

the National or State reservations shown on this map

Map photoinspected 1975

No major culture or drainage changes observed

SCALE 1:24 000

1 000 2000 3000 4000 5000 6000 7000 FEET

1 5 0 1 KILOMETER

CONTOUR INTERVAL 20 FEET

DOTTED LINES REPRESENT 10-FOOT CONTOURS

NATIONAL GEODETIC VERTICAL DATUM OF 1929



QUADRANGLE LOCATION

ROAD CLASSIFICATION

Heavy-duty	Light-duty
Medium-duty	Unimproved dirt
	State Route

LACAMAS CREEK, WASH.

NW/4 CAMAS 15' QUADRANGLE

45122-54-1F-02A

PHOTOINSPECTED 1975

1954

PHOTOREVISED 1970

DMA 1575 III NW—SERIES V891

USGS NMD HISTORICAL MAP

JUL 29 1966

REC'D FILE COPY