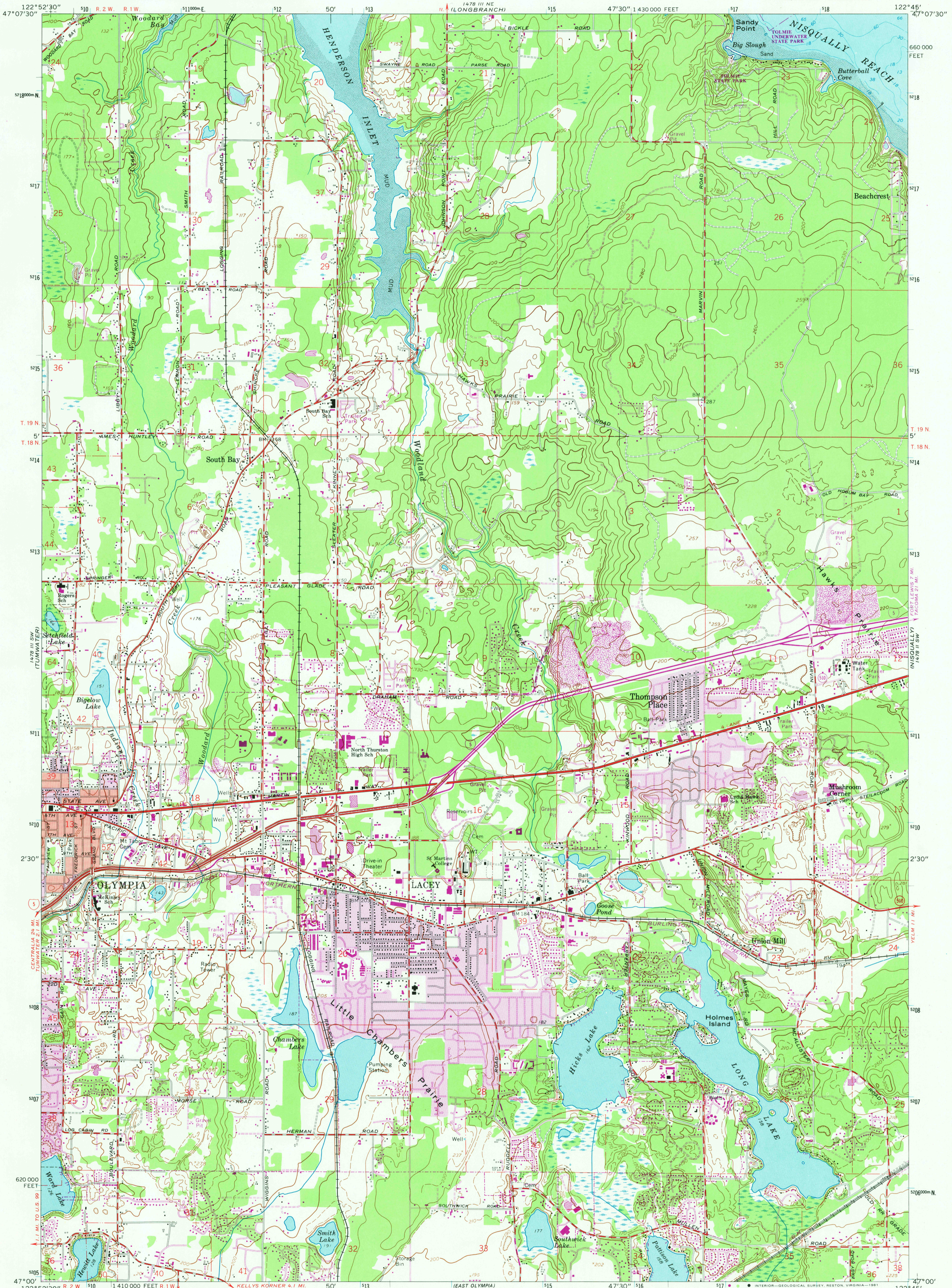
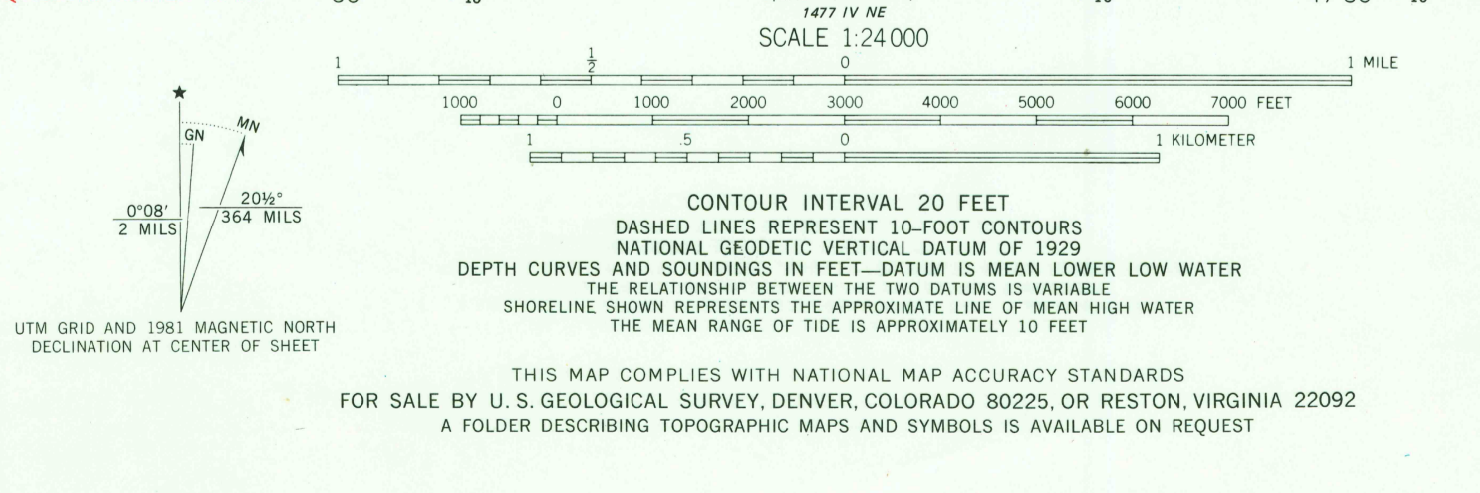


UNITED STATES
DEPARTMENT OF THE INTERIOR
GEOLOGICAL SURVEY

LACEY QUADRANGLE
WASHINGTON—THURSTON CO.
7.5 MINUTE SERIES (TOPOGRAPHIC)
SE/4 OLYMPIA 15' QUADRANGLE



Map by the Defense Mapping Agency
Published for civil use by the Geological Survey
Control by USGS, NOS/NOAA, and USCE
Topography by photogrammetric methods from aerial
photographs taken 1957. Field checked 1959.
Selected hydrographic data compiled from NOS chart 6462
(1947) and hydrographic surveys (1935). This information
is not intended for navigational purposes.
Polyconic projection. 10,000-foot grid ticks based on
Washington coordinate system, south zone. 1,000-meter
Universal Transverse Mercator grid ticks, zone 10, shown
in blue. 1927 North American Datum. To place on the
predicted North American Datum 1983 move the projection
lines 23 meters north and 94 meters east as shown by
dashed corner ticks.
There may be private inholdings within the boundaries of
the National or State reservations shown on this map.
Revisions shown in purple and woodland compiled by the Geological
Survey from aerial photographs taken 1976 and other sources.
This information not field checked. Map edited 1981.
Purple tint indicates extension of urban areas.



ROAD CLASSIFICATION
Heavy-duty — Light-duty —
Medium-duty — Unimproved dirt —
Interstate Route — Interstate Route — State Route

LACEY, WASH.
SE/4 OLYMPIA 15' QUADRANGLE
N4700—W12245/7.5
1959
PHOTOREVISED 1981
DMA 1478 III SE—SERIES 9891

RETURN TO:
USGS AND HISTORICAL MAP ARCHIVES
NOV 1 8 1981
7130