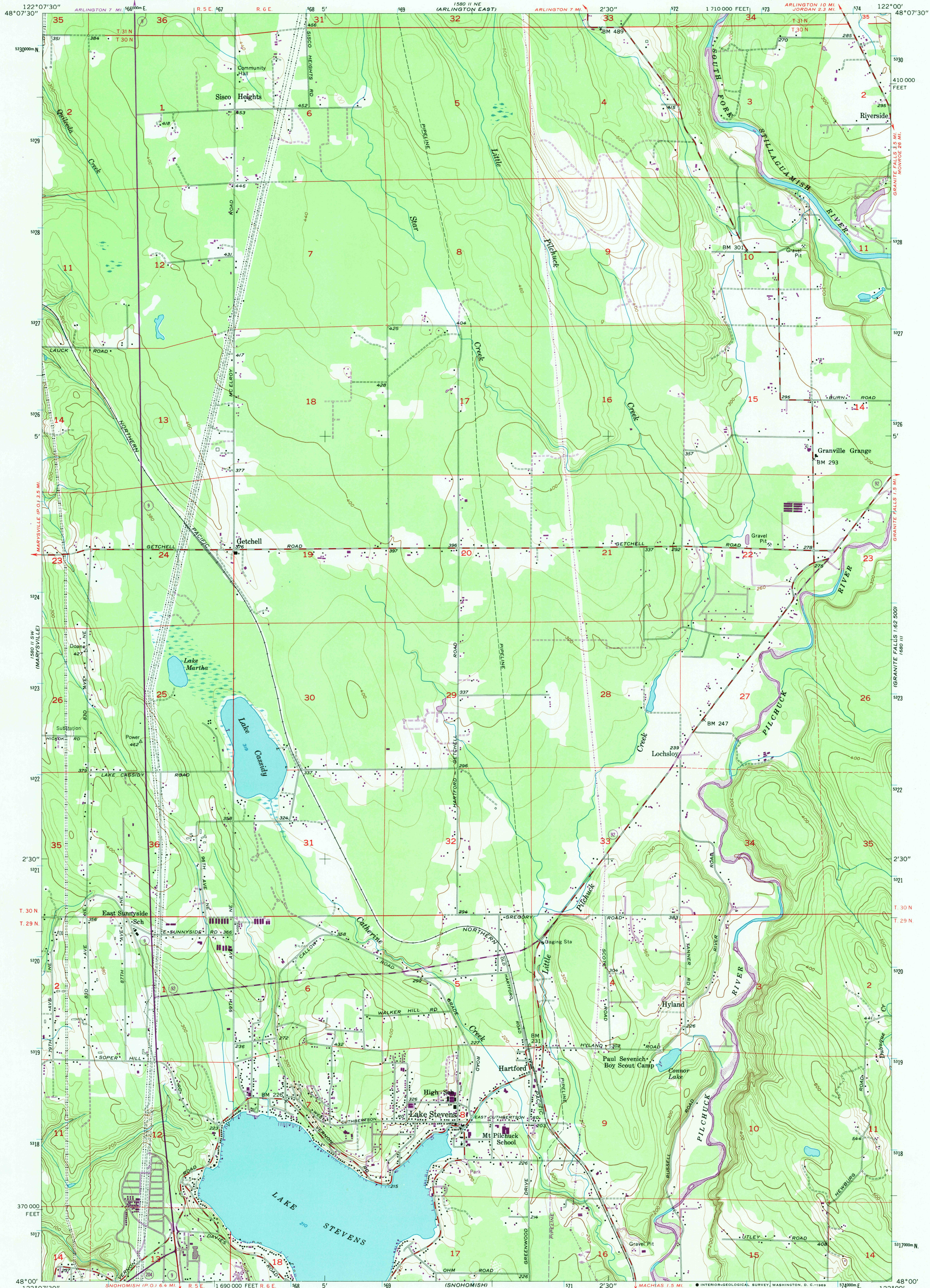
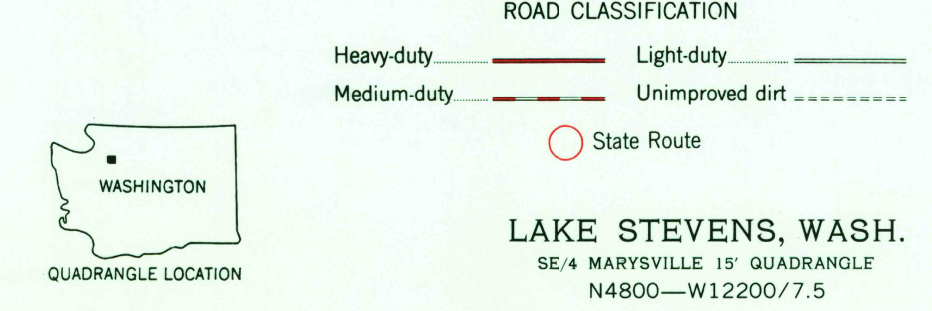
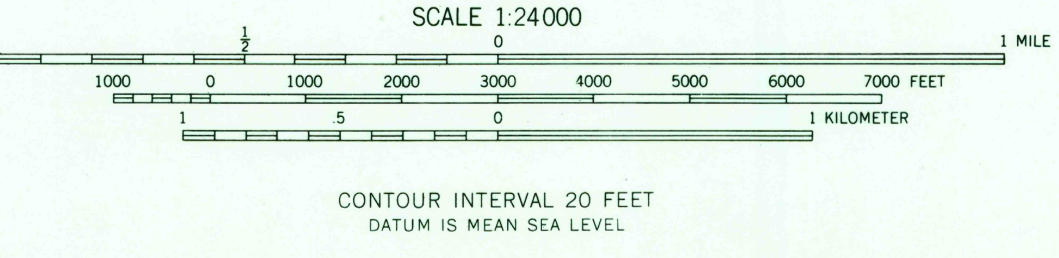
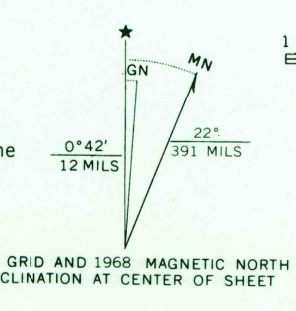


UNITED STATES
DEPARTMENT OF THE INTERIOR
GEOLOGICAL SURVEY

LAKE STEVENS QUADRANGLE
WASHINGTON—SNOHOMISH CO.
7.5 MINUTE SERIES (TOPOGRAPHIC)
SE/4 MARYSVILLE 15' QUADRANGLE



Mapped, edited, and published by the Geological Survey
Control by USGS and USC&GS
Topography from aerial photographs by multiplex methods
Aerial photographs taken 1954. Field check 1956
Polyconic projection. 1927 North American datum
10,000-foot grid based on Washington coordinate system, north zone
1000-meter Universal Transverse Mercator grid ticks,
zone 10, shown in blue
Revisions shown in purple compiled from aerial photographs
taken 1968. This information not field checked



LAKE STEVENS, WASH.
SE/4 MARYSVILLE 15' QUADRANGLE
N4800—W12200/7.5
1956
PHOTOREVISED 1968
AMS 1580 II SE—SERIES V891

U.S.G.S.
FILE COPY
TOPOGRAPHIC DIVISION

2565
OCT 2 1968