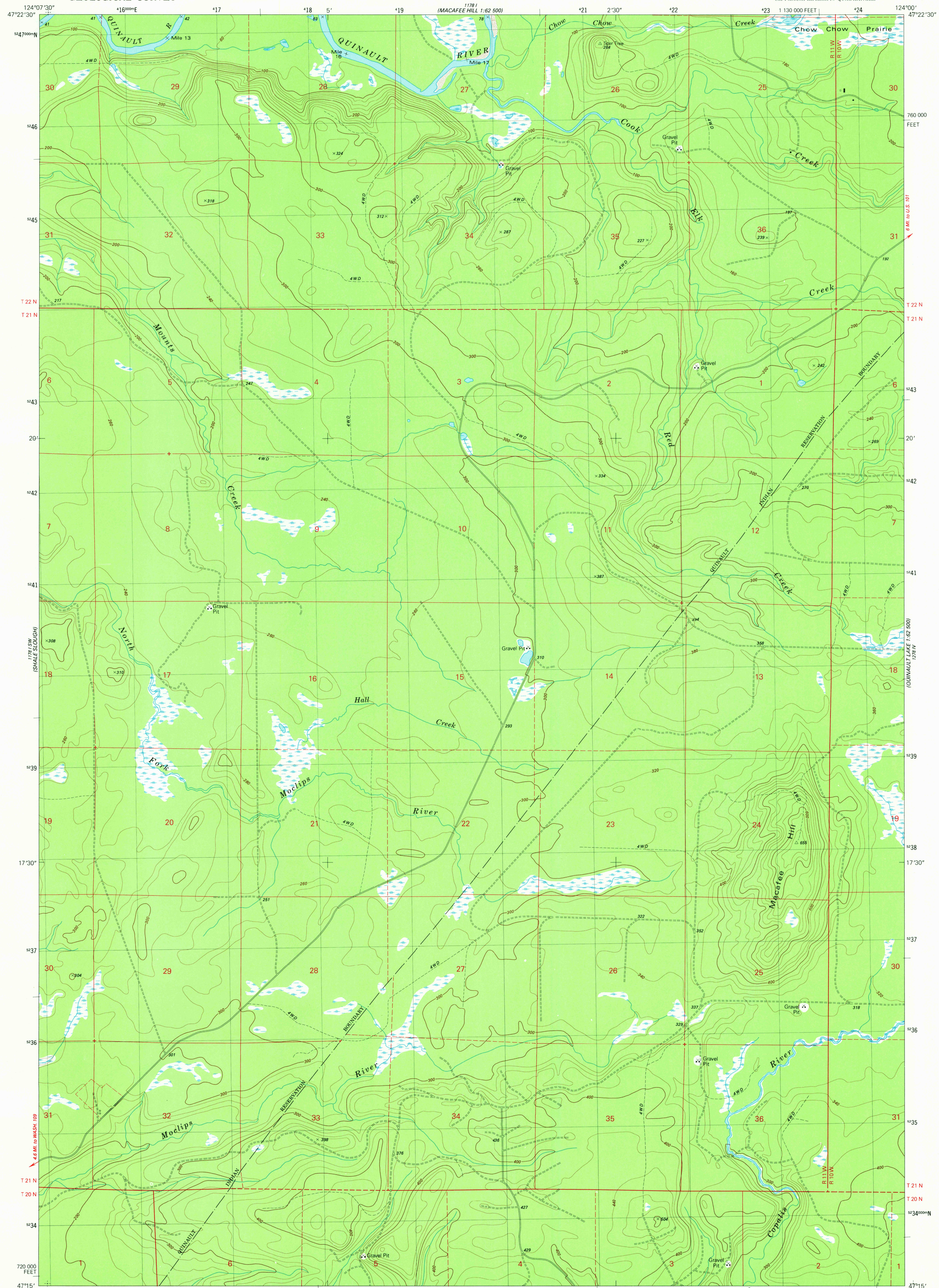


MACAFEE HILL
1:62 500

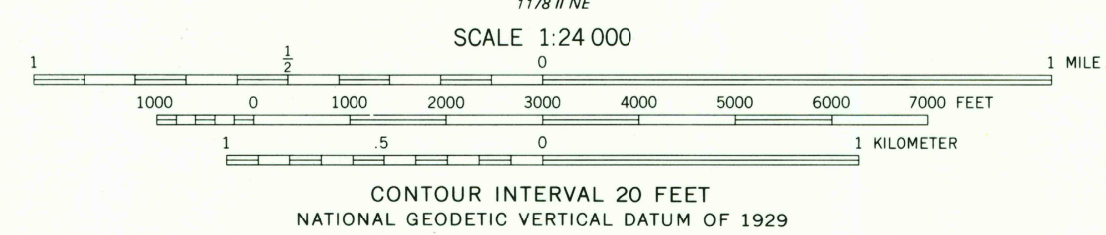
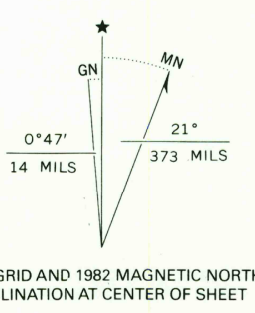
UNITED STATES
DEPARTMENT OF THE INTERIOR
GEOLOGICAL SURVEY

MACAFEE HILL QUADRANGLE
WASHINGTON—GRAYS HARBOR CO.
7.5 MINUTE SERIES (TOPOGRAPHIC)
SE/4 MACAFEE HILL 15' QUADRANGLE

MACAFEE HILL
1:62 500



Mapped, edited, and published by the Geological Survey
Control by USGS and NOS/NOAA
Topography by photogrammetric methods from aerial
photographs taken 1960. Field checked 1960. Map edited 1982
Projection and 10,000-foot grid ticks: Washington coordinate
system, south zone (Lambert conformal conic)
1000-meter Universal Transverse Mercator grid, zone 10
1927 North American Datum
To place on the predicted North American Datum 1983
move the projection lines 25 meters north and 97 meters
east as shown by dashed corner ticks
Fine red dashed lines indicate selected fence and field lines
where generally visible on aerial photographs
This information is unchecked
There may be private inholding within the boundaries of
the National or State reservations shown on this map



ROAD CLASSIFICATION
Primary highway, hard surface
Secondary highway, hard surface
Light duty road, hard or improved surface
Unimproved road
Interstate Route
U. S. Route
State Route

MACAFEE HILL, WASH.
SE/4 MACAFEE HILL 15' QUADRANGLE
N4715-W12400/7.5

1982

DMA 1178 I SE—SERIES V891

FOR SALE BY U. S. GEOLOGICAL SURVEY, DENVER, COLORADO 80225, OR RESTON, VIRGINIA 22092
A FOLDER DESCRIBING TOPOGRAPHIC MAPS AND SYMBOLS IS AVAILABLE ON REQUEST

RETURN TO:
USGS AND HISTORICAL MAP ARCHIVES

DEC 22 1982

2000