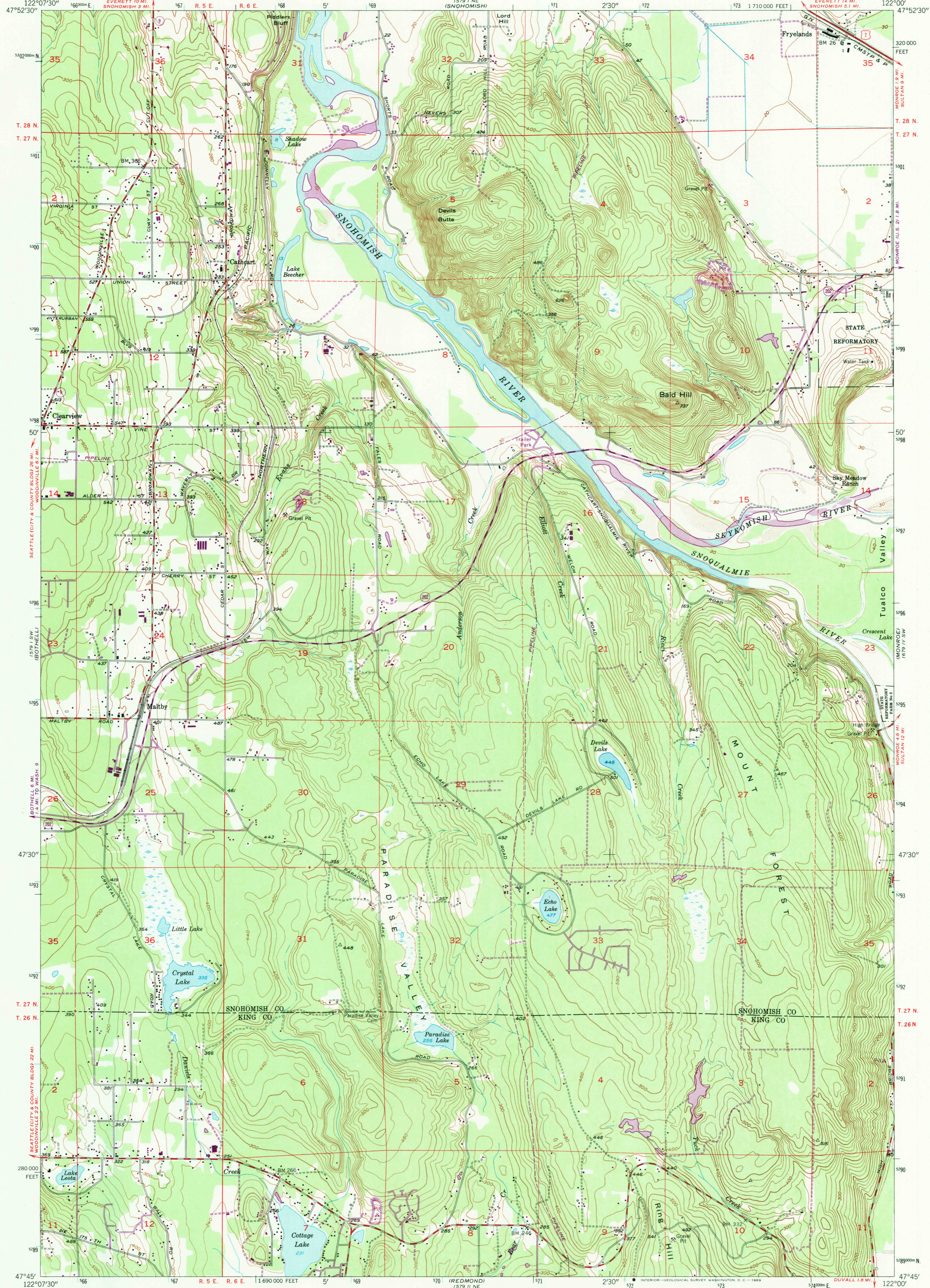


1579 1/4 NE (EVERETT)

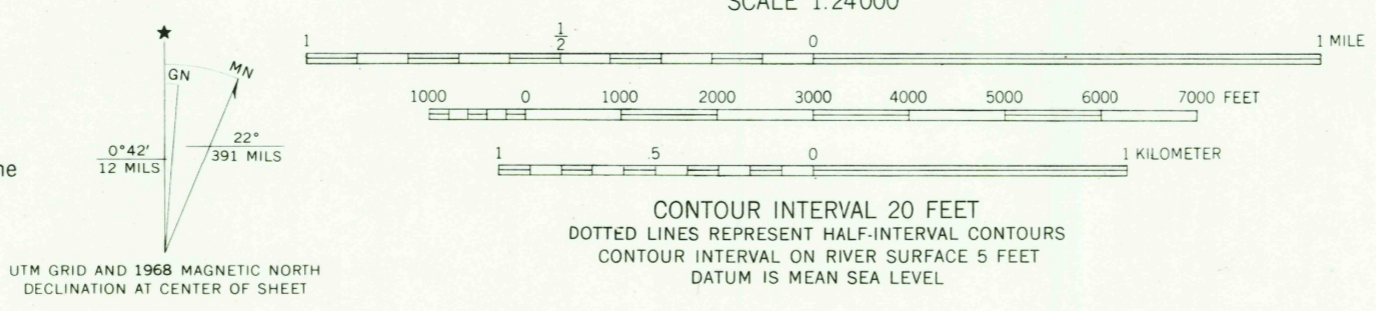
UNITED STATES  
DEPARTMENT OF THE INTERIOR  
GEOLOGICAL SURVEY

MALTY QUADRANGLE  
WASHINGTON  
7.5 MINUTE SERIES (TOPOGRAPHIC)  
SE/4 EVERETT 15' QUADRANGLE

1579 1/4 NE (MOUNTAIN)  
1579 1/4 SE (SULTAN)



Mapped, edited, and published by the Geological Survey  
Control by USGS and USC&GS  
Topography from aerial photographs by multiplex methods  
and by plane-table surveys 1953. Aerial photographs taken 1952  
Polyconic projection, 1927 North American datum  
10,000-foot grid based on Washington coordinate system, north zone  
Dashed land lines indicate approximate locations  
1000-meter Universal Transverse Mercator grid ticks,  
zone 10, shown in blue  
Revisions shown in purple compiled from aerial photographs  
taken 1968. This information not field checked



ROAD CLASSIFICATION

Heavy-duty	Light-duty
Medium-duty	Unimproved dirt
U.S. Route	State Route

USGS Historical File Topographic Division  
MALTBY, WASH.  
SE/4 EVERETT 15' QUADRANGLE  
N4745-W12200/7.5

U.S.G.S.  
FILE COPY  
TOPOGRAPHIC DIVISION

FOR SALE BY U.S. GEOLOGICAL SURVEY, DENVER, COLORADO 80225, OR WASHINGTON, D. C. 20242  
A FOLDER DESCRIBING TOPOGRAPHIC MAPS AND SYMBOLS IS AVAILABLE ON REQUEST

1953  
PHOTOREPRODUCED  
AMS 1579 1 SE-SERIES V891

3240  
OCT 1 1968