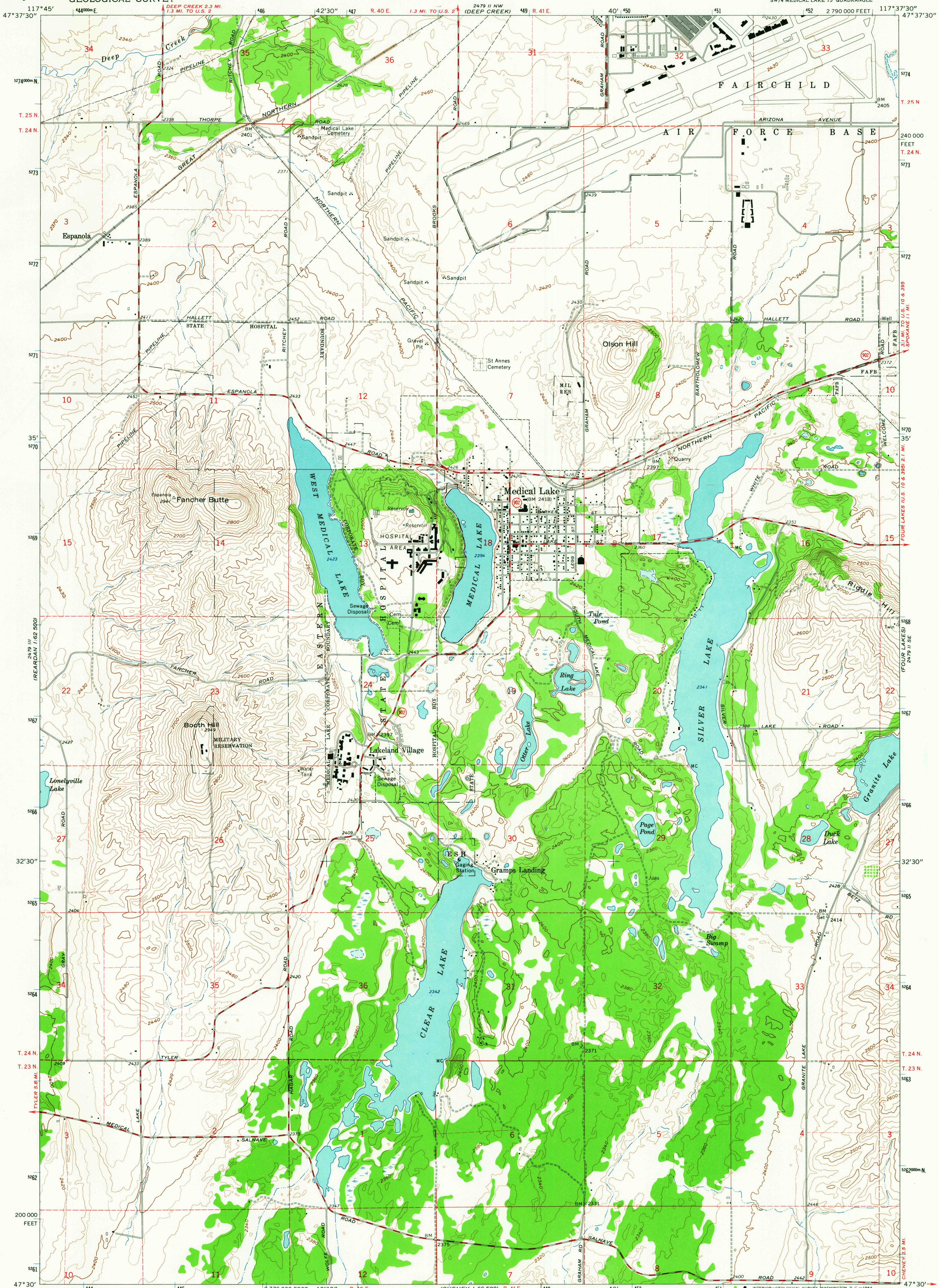
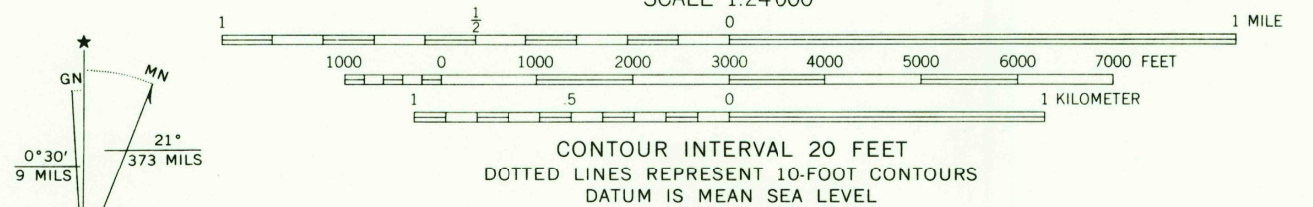


UNITED STATES
DEPARTMENT OF THE INTERIOR
GEOLOGICAL SURVEY

MEDICAL LAKE QUADRANGLE
WASHINGTON—SPOKANE CO.
7.5 MINUTE SERIES (TOPOGRAPHIC)
SW/4 MEDICAL LAKE 15' QUADRANGLE



Maped, edited, and published by the Geological Survey
Control by USGS and USC&GS
Topography by photogrammetric methods from aerial photographs
taken 1952 and planimetric surveys 1954
Revised from aerial photographs taken 1962. Field checked 1963
Polyconic projection. 1927 North American datum
10,000-foot grid based on Washington coordinate system, north zone
1000-meter Universal Transverse Mercator grid ticks,
zone 11, shown in blue
Fine red dashed lines indicate selected fence lines



THIS MAP COMPLIES WITH NATIONAL MAP ACCURACY STANDARDS
FOR SALE BY U. S. GEOLOGICAL SURVEY, DENVER 25, COLORADO OR WASHINGTON 25, D. C.
A FOLDER DESCRIBING TOPOGRAPHIC MAPS AND SYMBOLS IS AVAILABLE ON REQUEST

USGS
Historical File
Topographic Division
MEDICAL LAKE, WASH.
SW/4 MEDICAL LAKE 15' QUADRANGLE
N4730—W11737.5/7.5
1963

U.S.G.S.
FILE COPY
TOPOGRAPHIC DIVISION

SEP 24 1964

AMS 2479 II SW—SERIES V891

2570