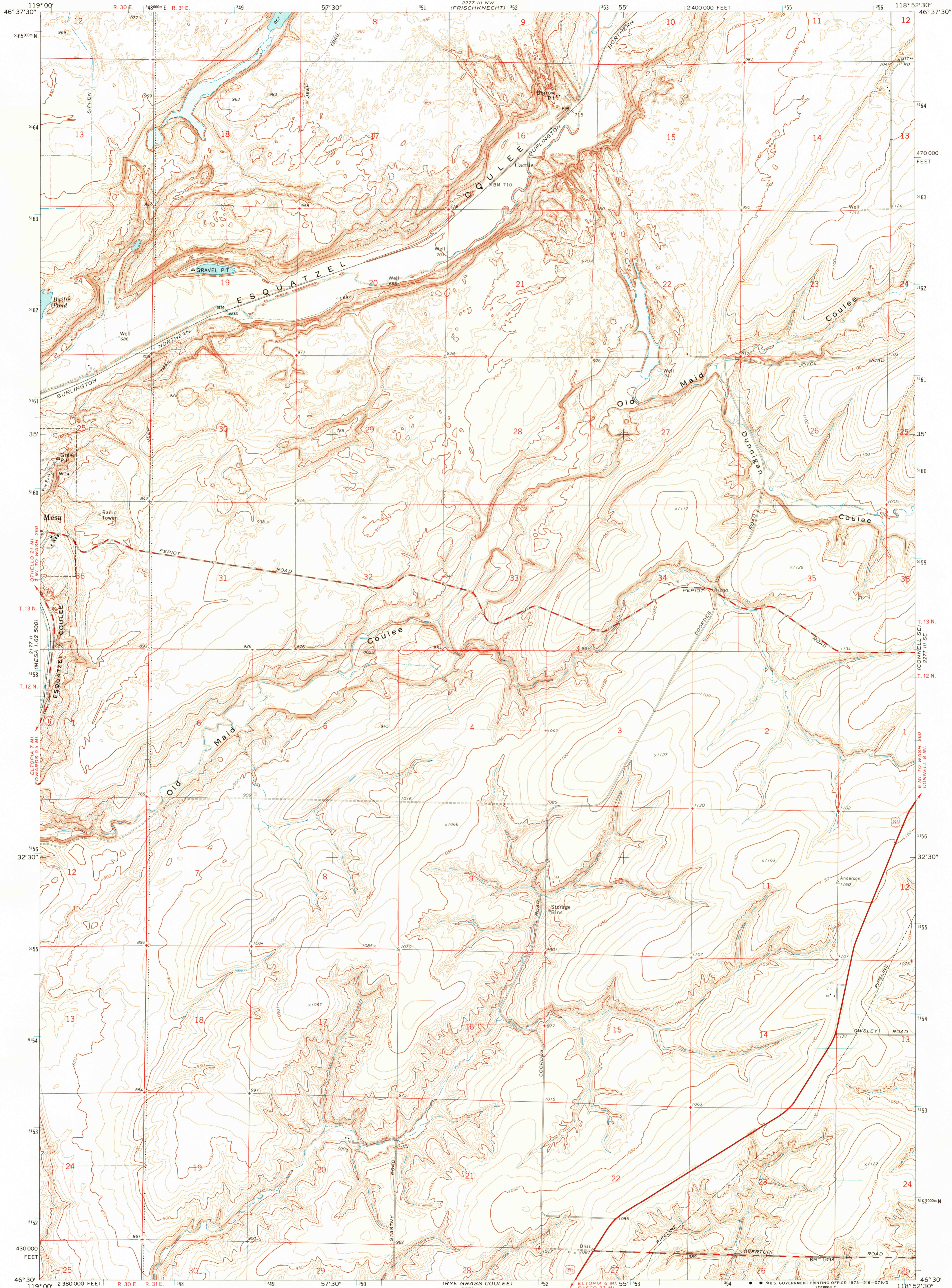
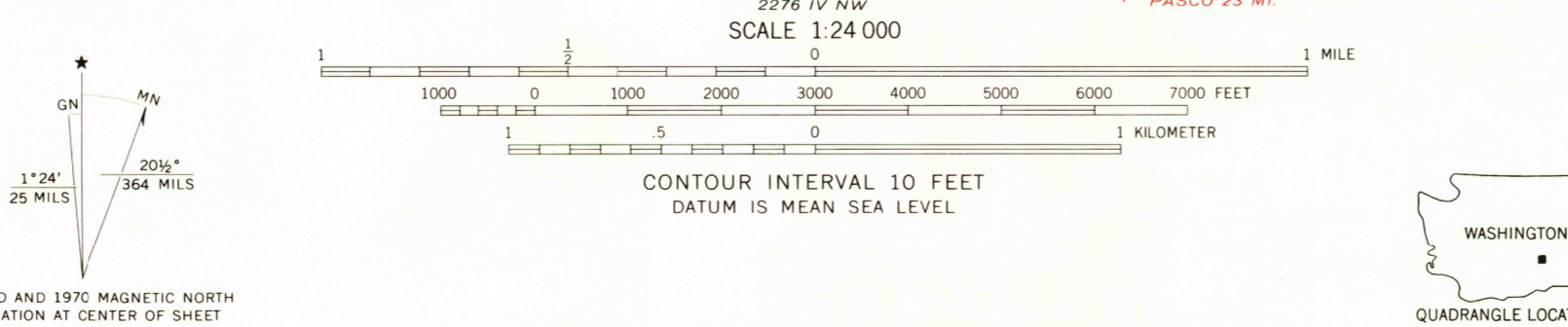


UNITED STATES
DEPARTMENT OF THE INTERIOR
GEOLOGICAL SURVEY

MESA EAST QUADRANGLE
WASHINGTON—FRANKLIN CO.
7.5 MINUTE SERIES (TOPOGRAPHIC)



Mapped, edited, and published by the Geological Survey
Control by USGS and USC&GS
Topography by photogrammetric methods from aerial photographs taken 1969. Field checked 1970
Polyconic projection. 1927 North American datum 10,000-foot grid based on Washington coordinate system, south zone
1,000-meter Universal Transverse Mercator grid ticks, zone 11, shown in blue
Fine red dashed lines indicate selected fence lines



ROAD CLASSIFICATION
Primary highway, hard surface ——— Light-duty road, hard or improved surface ———
Secondary highway, hard surface ——— Unimproved road ———
Interstate Route (I) U.S. Route (R) State Route (S)

THIS MAP COMPLIES WITH NATIONAL MAP ACCURACY STANDARDS
FOR SALE BY U.S. GEOLOGICAL SURVEY, DENVER, COLORADO 80225, OR WASHINGTON, D.C. 20242
A FOLDER DESCRIBING TOPOGRAPHIC MAPS AND SYMBOLS IS AVAILABLE ON REQUEST

MESA EAST, WASH.
N4630—W11852.5/7.5

MAY 10 1973

1970
AMS 2277 III SW—SERIES V891