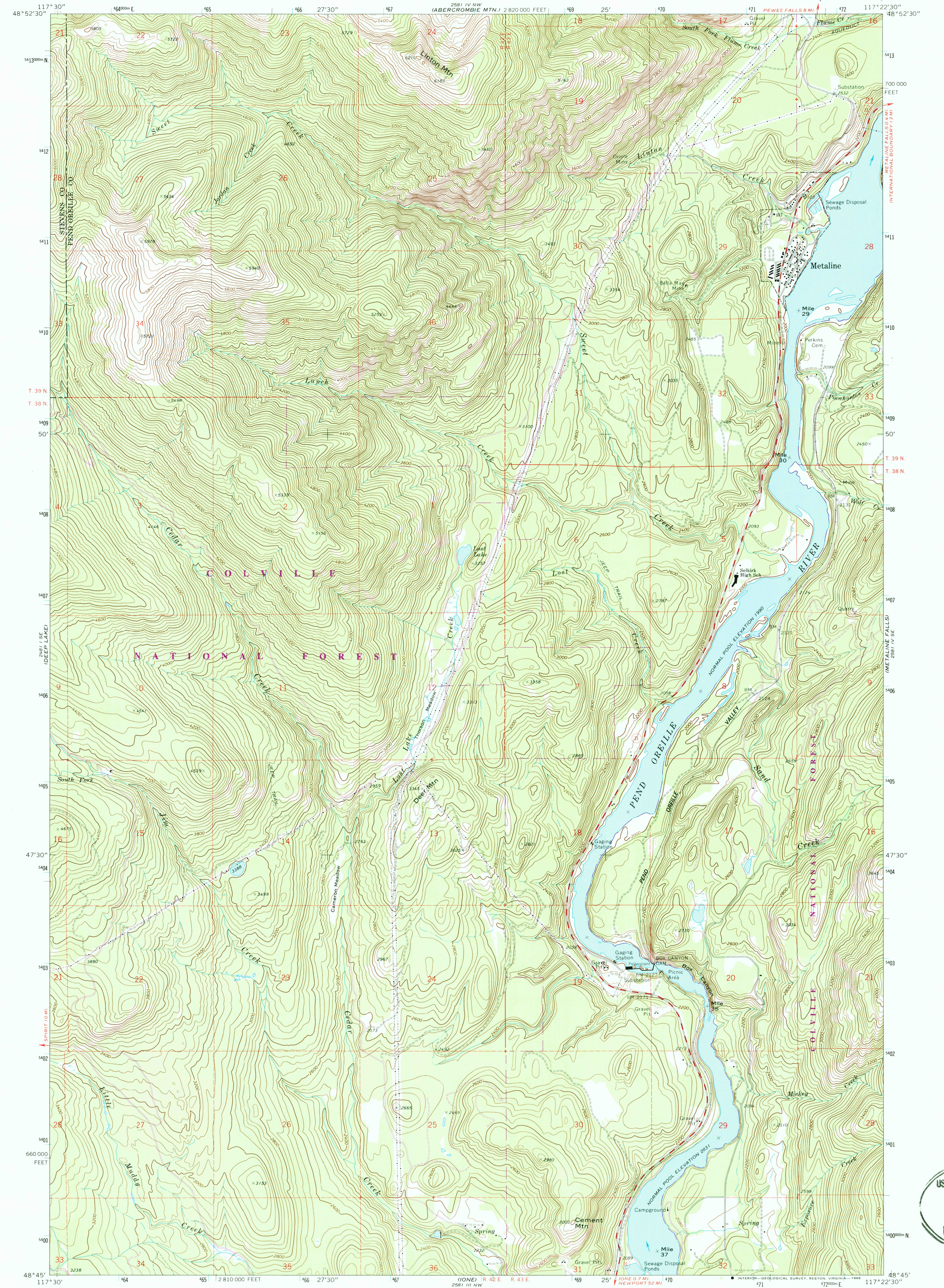


2581 IV NW  
(LEADPOKE)

UNITED STATES  
DEPARTMENT OF THE INTERIOR  
GEOLOGICAL SURVEY

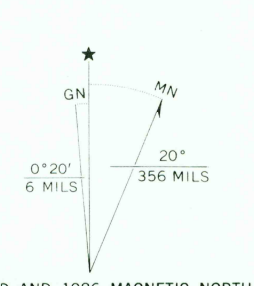
METALINE QUADRANGLE  
WASHINGTON  
7.5 MINUTE SERIES (TOPOGRAPHIC)

2581 IV SE  
(BOUNDARY DAM)



2581 IV NE  
(ALADDIN MTN.)

Mapped, edited, and published by the Geological Survey  
Control by USGS and NOS/NOAA  
Topography by photogrammetric methods from aerial photographs taken 1966. Field checked 1967  
Polyconic projection. 1927 North American Datum  
10,000-foot grid based on Washington coordinate system, north zone  
1000-meter Universal Transverse Mercator grid ticks, zone 11, shown in blue  
To place on the predicted North American Datum 1983 move the projection lines 14 meters north and 79 meters east as shown by dashed corner ticks  
There may be private inholdings within the boundaries of the National or State reservations shown on this map



SCALE 1:24 000  
CONTOUR INTERVAL 40 FEET  
NATIONAL GEODETIC VERTICAL DATUM OF 1929  
THIS MAP COMPLIES WITH NATIONAL MAP ACCURACY STANDARDS  
FOR SALE BY U. S. GEOLOGICAL SURVEY  
DENVER, COLORADO 80225, OR RESTON, VIRGINIA 22092  
A FOLDER DESCRIBING TOPOGRAPHIC MAPS AND SYMBOLS IS AVAILABLE ON REQUEST



ROAD CLASSIFICATION  
Medium-duty ——— Light-duty ———  
Unimproved dirt ———  
State Route

METALINE, WASH.  
48117-G4-TF-024

1967  
PHOTOREVISED 1986  
DMA 2581 IV SW—SERIES V891

