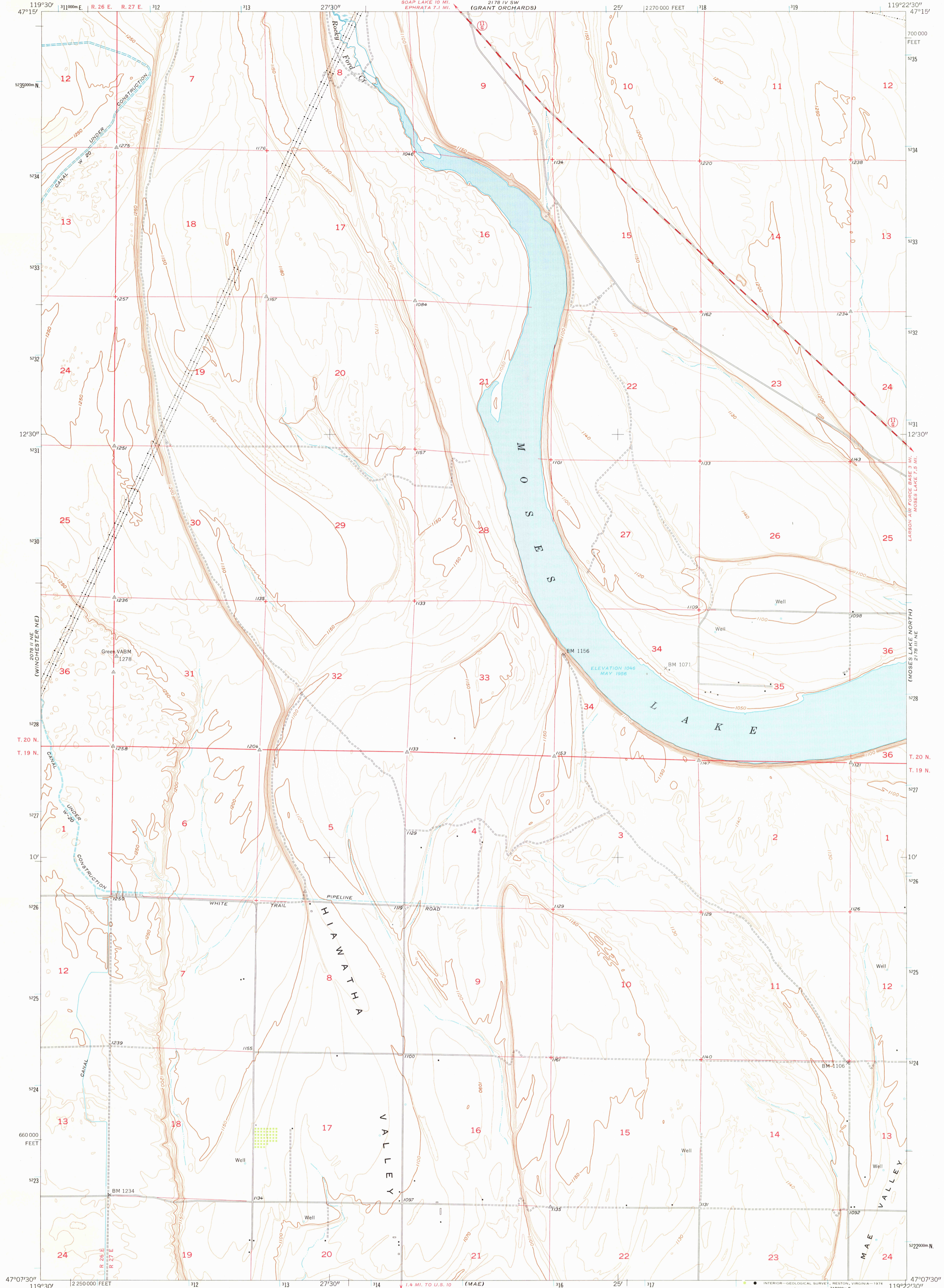


(27° 45' E)
(124° 15' W)

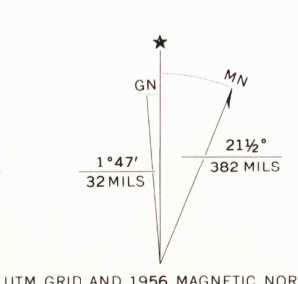
UNITED STATES
DEPARTMENT OF THE INTERIOR
GEOLOGICAL SURVEY

MOSES LAKE NW QUADRANGLE
WASHINGTON—GRANT CO.
7.5 MINUTE SERIES (TOPOGRAPHIC)
NW/4 MOSES LAKE 15' QUADRANGLE

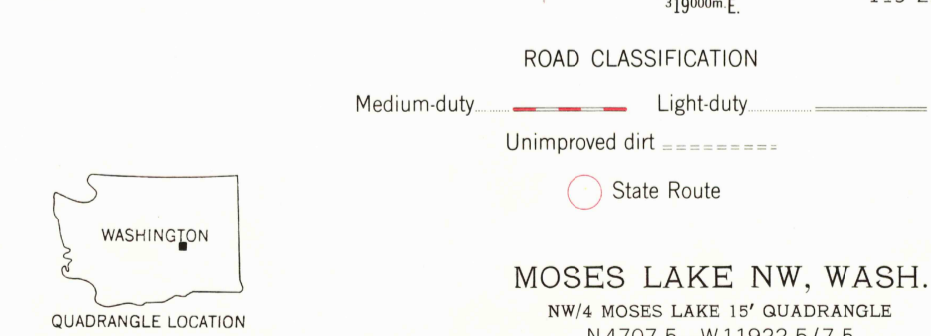
(27° 45' SE)
(124° 15' E)



Mapped, edited, and published by the Geological Survey
Control by USGS, USC&GS, and USBR
Culture and drainage compiled from aerial photographs
taken 1954. Topography from planetable surveys by USBR 1937
Field check 1956
Polyconic projection. 1927 North American datum
10,000-foot grid based on Washington coordinate system, south zone
1000-metre Universal Transverse Mercator grid ticks,
zone 11, shown in blue
Elevations at section corners are for top of marker



SCALE 1:24 000
CONTOUR INTERVAL 10 FEET
NATIONAL GEODETIC VERTICAL DATUM OF 1929
1 MILE
1 KILOMETRE



USGS
Historical File
Topographic Division
1956
AMS 2178 III NW—SERIES V891

MOSES LAKE NW, WASH.
NW/4 MOSES LAKE 15' QUADRANGLE
N 4707.5—W 11922.5/7.5

MAR 29 1976

THIS MAP COMPLIES WITH NATIONAL MAP ACCURACY STANDARDS
FOR SALE BY U. S. GEOLOGICAL SURVEY, DENVER, COLORADO 80225, OR RESTON, VIRGINIA 22092
A FOLDER DESCRIBING TOPOGRAPHIC MAPS AND SYMBOLS IS AVAILABLE ON REQUEST