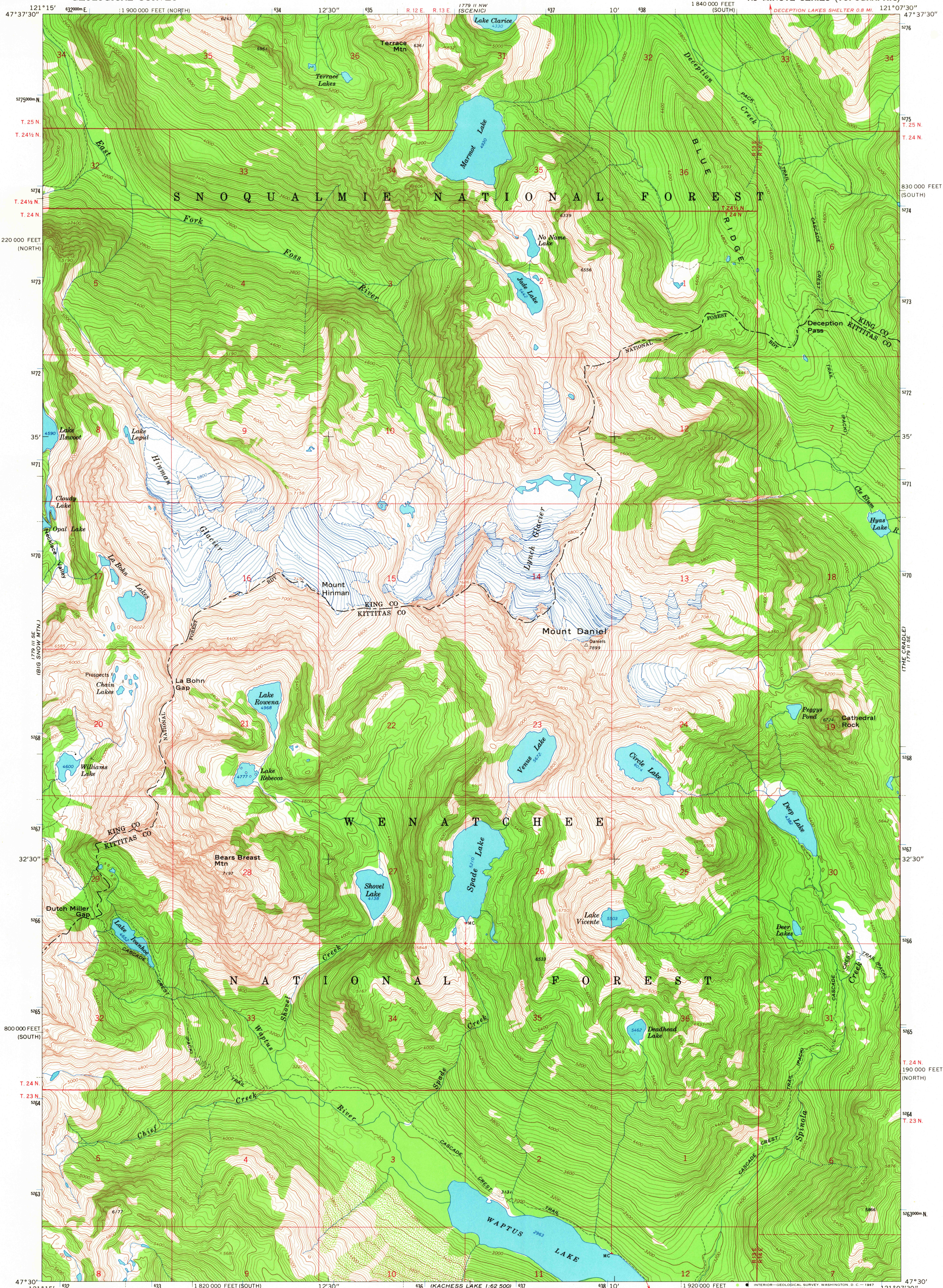
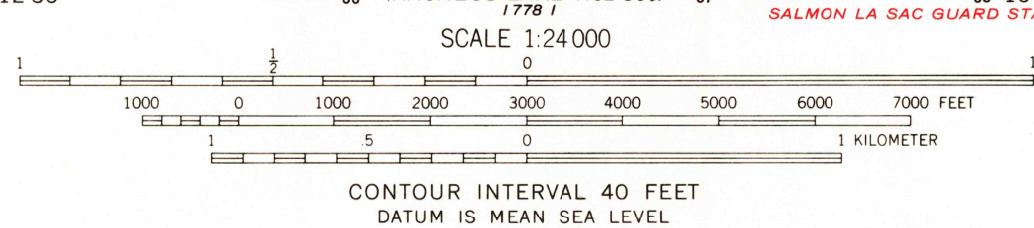


UNITED STATES
DEPARTMENT OF THE INTERIOR
GEOLOGICAL SURVEY

MOUNT DANIEL QUADRANGLE
WASHINGTON
7.5 MINUTE SERIES (TOPOGRAPHIC)



Mapped, edited, and published by the Geological Survey
Control by USGS and USC&GS
Topography by photogrammetric methods from aerial
photographs taken 1958. Field checked 1965
Polyconic projection. 1927 North American datum
10,000-foot grids based on Washington coordinate system,
south and north zone
1000-meter Universal Transverse Mercator grid ticks,
zone 10, shown in blue



ROAD CLASSIFICATION
Trails

USGS
Historical File
Topographic Division
MOUNT DANIEL, WASH.
N4730—W12107.5/7.5
1965

FOR SALE BY U. S. GEOLOGICAL SURVEY, DENVER, COLORADO 80225, OR WASHINGTON, D. C. 20542
A FOLDER DESCRIBING TOPOGRAPHIC MAPS AND SYMBOLS IS AVAILABLE ON REQUEST

U.S.G.S.
WASHINGTON
FILE COPY
TOPOGRAPHIC DIVISION

AMS 1779 II SW—SERIES V891

FEB 1 1968