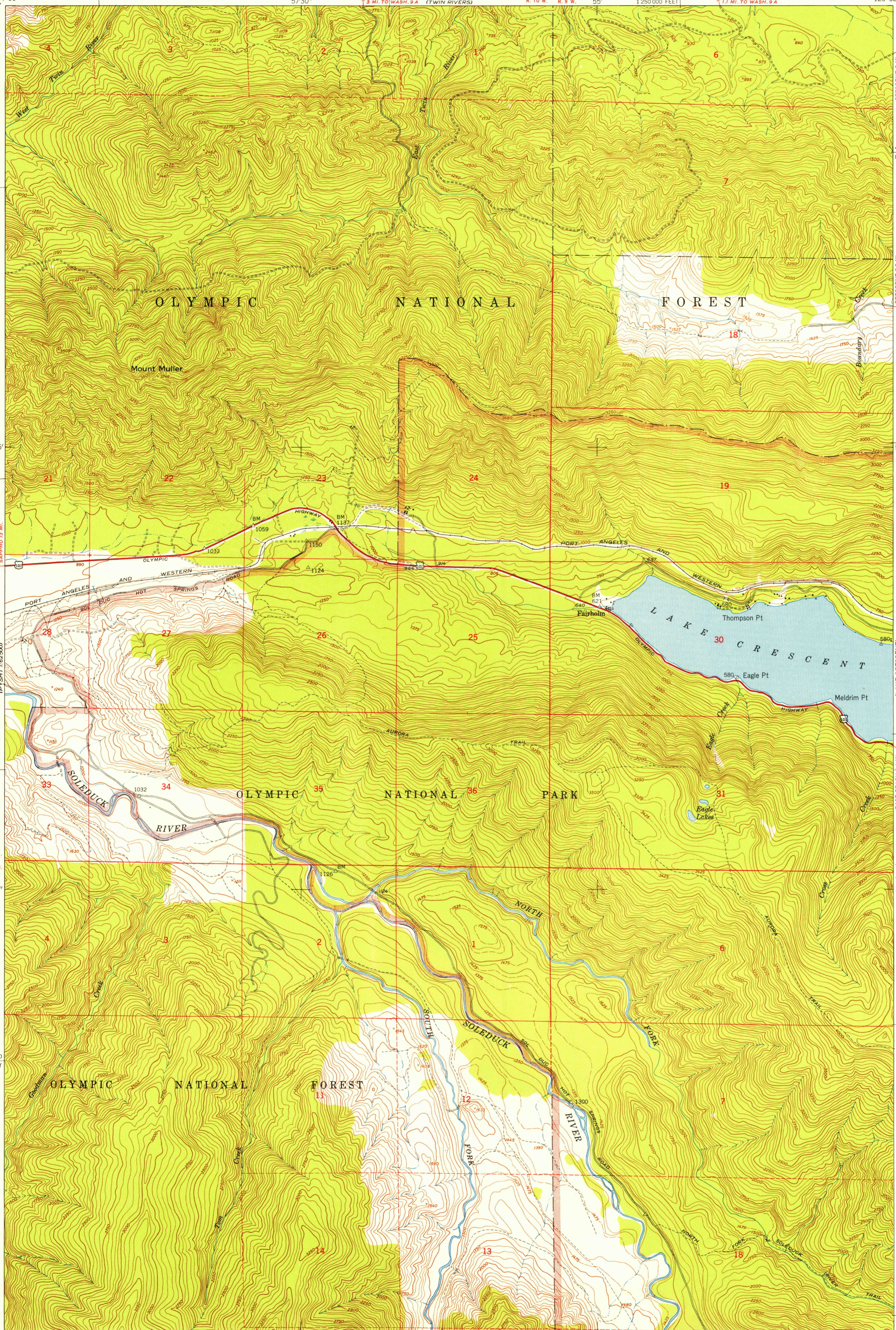


124°00' 57°30' 125°00' 123°52'30" 48°07'30" 48°07'30"



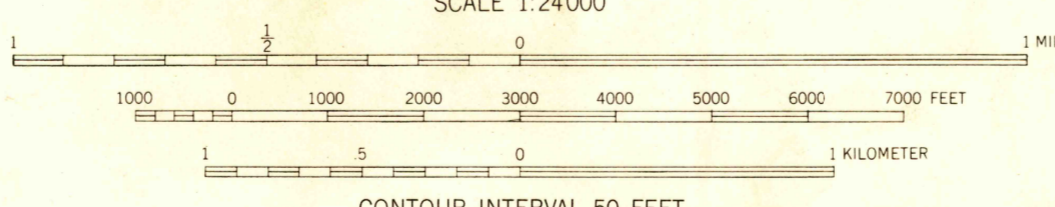
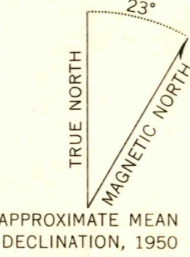
T. 30 N.  
T. 29 N.  
2'30"

T. 30 N.  
T. 29 N.  
2'30"

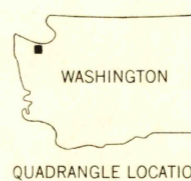
48°00' 124°00'

48°00' 123°52'30"

Mapped by the Army Map Service  
Published for civil use by the Geological Survey  
Control by USGS, USC&GS, and USCE  
Topography from aerial photographs by multiplex methods  
Aerial photographs taken 1943. Field check 1950  
Polyconic projection. 1927 North American datum  
10,000-foot grid based on Washington coordinate system,  
north zone  
Dashed land lines indicate approximate locations  
Unchecked elevations are shown in brown



CONTOUR INTERVAL 50 FEET  
DASHED LINES REPRESENT HALF-INTERVAL CONTOURS  
DATUM IS MEAN SEA LEVEL



ROAD CLASSIFICATION  
Heavy-duty 4 LANE 16 LANE Light-duty  
Medium-duty 4 LANE 6 LANE Unimproved dirt =====  
U. S. Route State Route

USGS  
Historical File MOUNT MULLER, WASH.  
Topographic Division SW/4 LAKE CRESCENT 15' QUADRANGLE  
N4800—W12352.5/7.5

THIS MAP COMPLIES WITH NATIONAL MAP ACCURACY STANDARDS  
FOR SALE BY U. S. GEOLOGICAL SURVEY, FEDERAL CENTER, DENVER, COLORADO OR WASHINGTON 25, D. C.  
A FOLDER DESCRIBING TOPOGRAPHIC MAPS AND SYMBOLS IS AVAILABLE ON REQUEST

1950

U.S.G.S.  
FILE COPY  
TOPOGRAPHIC DIVISION

U.S.G.S.  
FILE COPY  
TOPOGRAPHIC DIVISION

MAR 18 1955