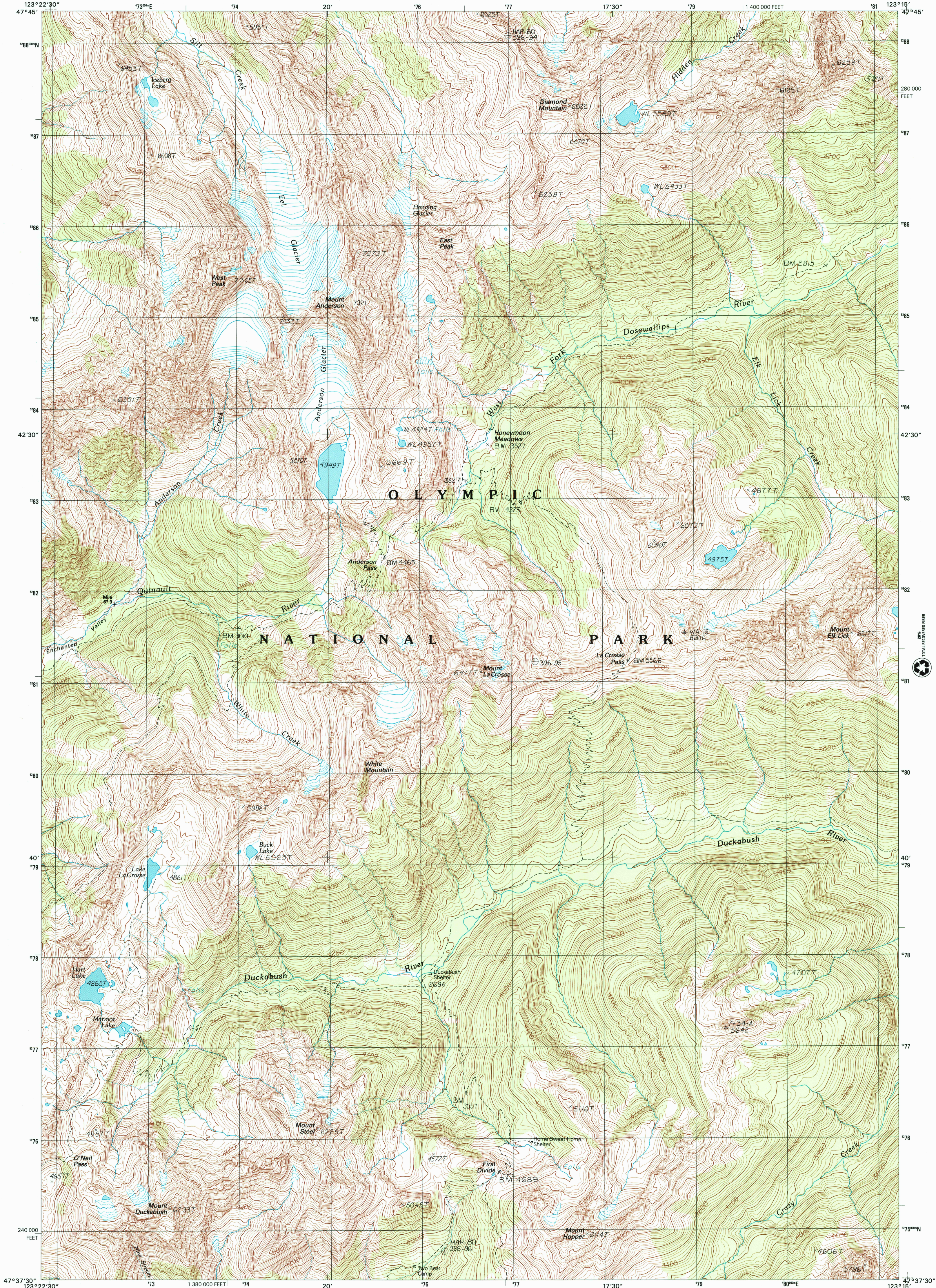




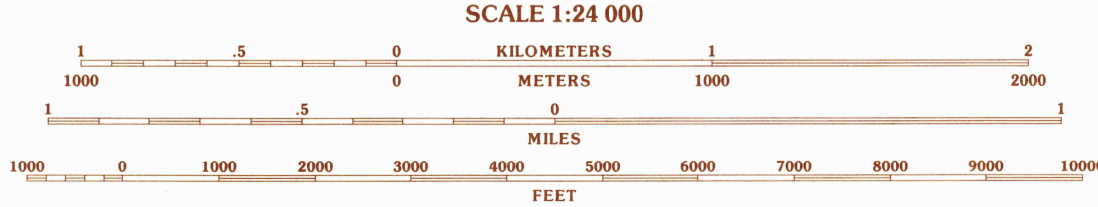
U.S. DEPARTMENT OF THE INTERIOR
U.S. GEOLOGICAL SURVEY

MOUNT STEEL QUADRANGLE
WASHINGTON-JEFFERSON CO.
7.5-MINUTE SERIES (TOPOGRAPHIC)



PRODUCED BY THE UNITED STATES GEOLOGICAL SURVEY
DERIVED FROM IMAGERY TAKEN 1985
PHOTOINSPECTED USING IMAGERY TAKEN 1999
NO MAJOR CULTURE OR DRAINAGE CHANGES OBSERVED
PLUS AND SURVEY CONTROL CURRENT AS OF
BOUNDARIES VERIFIED 1986
PROJECTION TRANSVERSE MERCATOR
1000 METER UNIVERSAL TRANSVERSE MERCATOR GRID ZONE 10
10,000 FOOT STATE GRID TICKS WASHINGTON, NORTH ZONE
UTM GRID DECLINATION 00°14' WEST
2003 MAGNETIC NORTH DECLINATION 18°30' EAST
VERTICAL DATUM NATIONAL GEODETIC VERTICAL DATUM OF 1929
HORIZONTAL DATUM NORTH AMERICAN DATUM OF 1983 (NAD 83)
NAD 83 is shown by
dashed corner ticks. The values of the shift between
NAD 27 and NAD 83 for 7.5-minute intersections are
obtainable from National Geodetic Survey NADCON
software
There may be private inholdings within the boundaries
of the Federal or State reservations shown on this map
Where omitted, land lines have not been established

PROVISIONAL MAP
Produced from original
manuscript drawings. Infor-
mation shown as of date of
photography.



SCALE 1:24 000
CONTOUR INTERVAL 40 FEET
NATIONAL GEODETIC VERTICAL DATUM OF 1929
(TO CONVERT ELEVATIONS TO THE NORTH AMERICAN VERTICAL DATUM OF 1988, ADD 4 FEET)
TO CONVERT FROM FEET TO METERS, MULTIPLY BY 0.3048
THIS MAP COMPLIES WITH NATIONAL MAP ACCURACY STANDARDS
FOR SALE BY U.S. GEOLOGICAL SURVEY, P.O. BOX 25286, DENVER, COLORADO 80225
A FOLDER DESCRIBING TOPOGRAPHIC MAPS AND SYMBOLS IS AVAILABLE ON REQUEST



QUADRANGLE LOCATION

1	2	3	1 McCartney Peak
4	5	5 The Brothers	2 Welleney Peak
6	7	8 Mount Hopper	3 Mount Deception
			4 Chimney Peak
			6 Mount Olson
			7 Mount Skokholm
			8 Mount Washington

ROAD LEGEND
Improved Road
Unimproved Road
Trail
Interstate Route
U.S. Route
State Route

JUL 15 2003

MOUNT STEEL, WA
PROVISIONAL EDITION 1999

9 78607 993912

RECEIVED
AUG 28 2003
HISTORICAL MAP ARCHIVES

USGS LIBRARY - RESTON
3 1818 00417680 4