

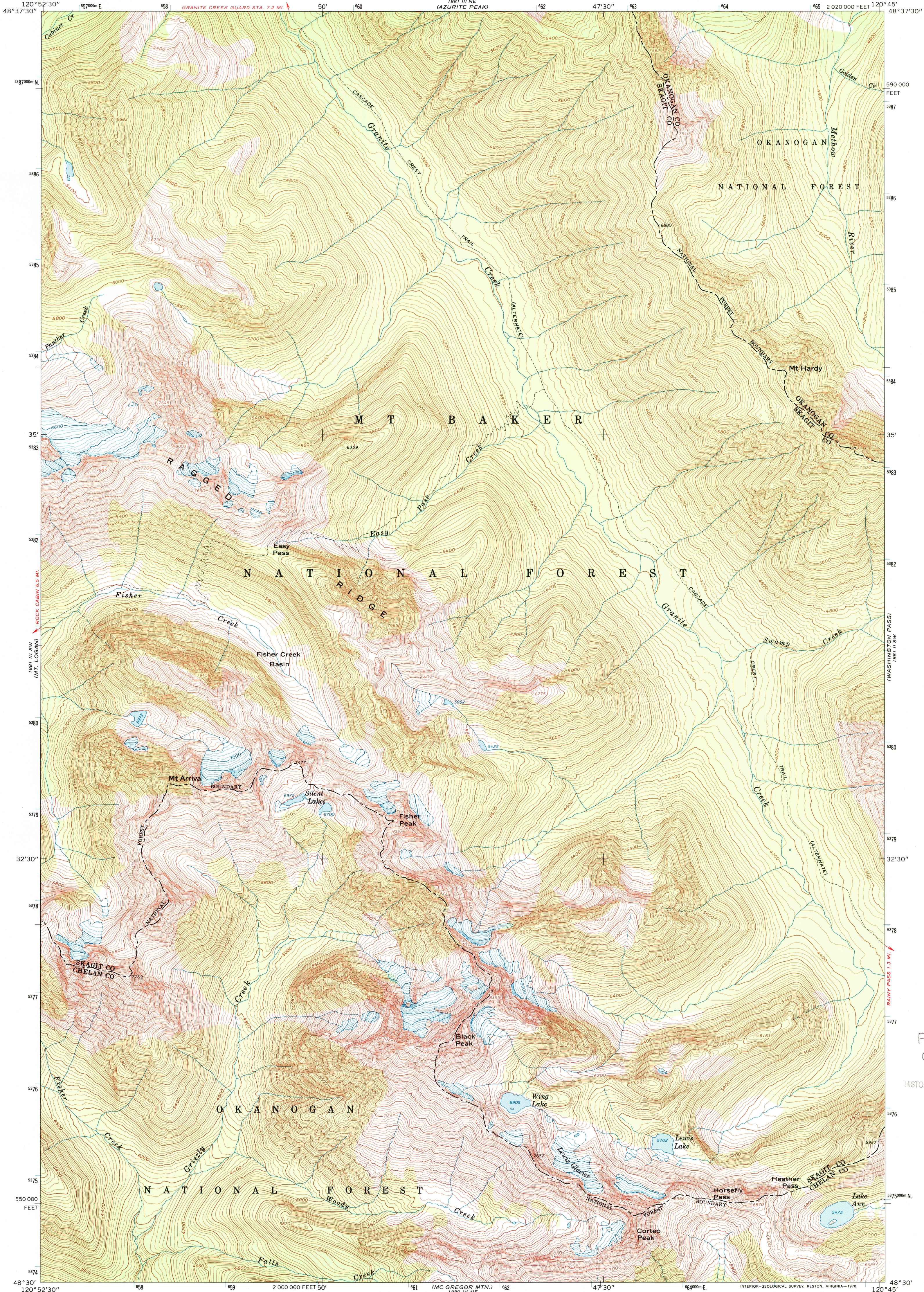
1881 III NW  
(CRATER MTN.)



U.S. DEPARTMENT OF THE INTERIOR  
U.S. GEOLOGICAL SURVEY

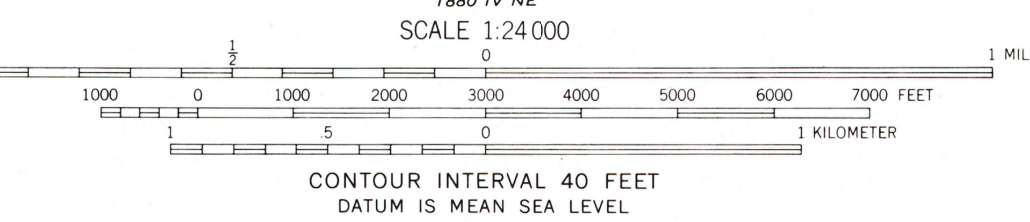
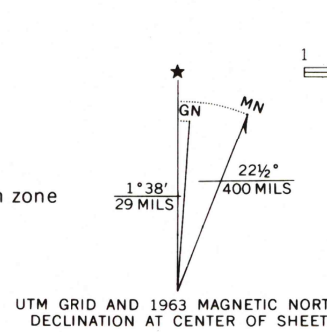
MT. ARRIVA QUADRANGLE  
WASHINGTON  
7.5 MINUTE SERIES (TOPOGRAPHIC)

1881 II NW  
(SLY PEAK)



1881 IV NW  
(BOODE MTN.)

Mapped, edited, and published by the Geological Survey  
Control by USGS and USC&GS  
Topography by photogrammetric methods from aerial  
photographs taken 1958. Field checked 1963  
Polyconic projection. 1927 North American datum  
10,000-foot grid based on Washington coordinate system, north zone  
1000-meter Universal Transverse Mercator grid ticks,  
zone 10, shown in blue  
Where omitted, land lines have not been established



ROAD CLASSIFICATION  
Trails

MT. ARRIVA, WASH.  
N4830-W12045/7.5

1963

AMS 1881 III SE-SERIES V891

RECEIVED  
OCT 3 1 2001  
HISTORICAL MAP ARCHIVES

