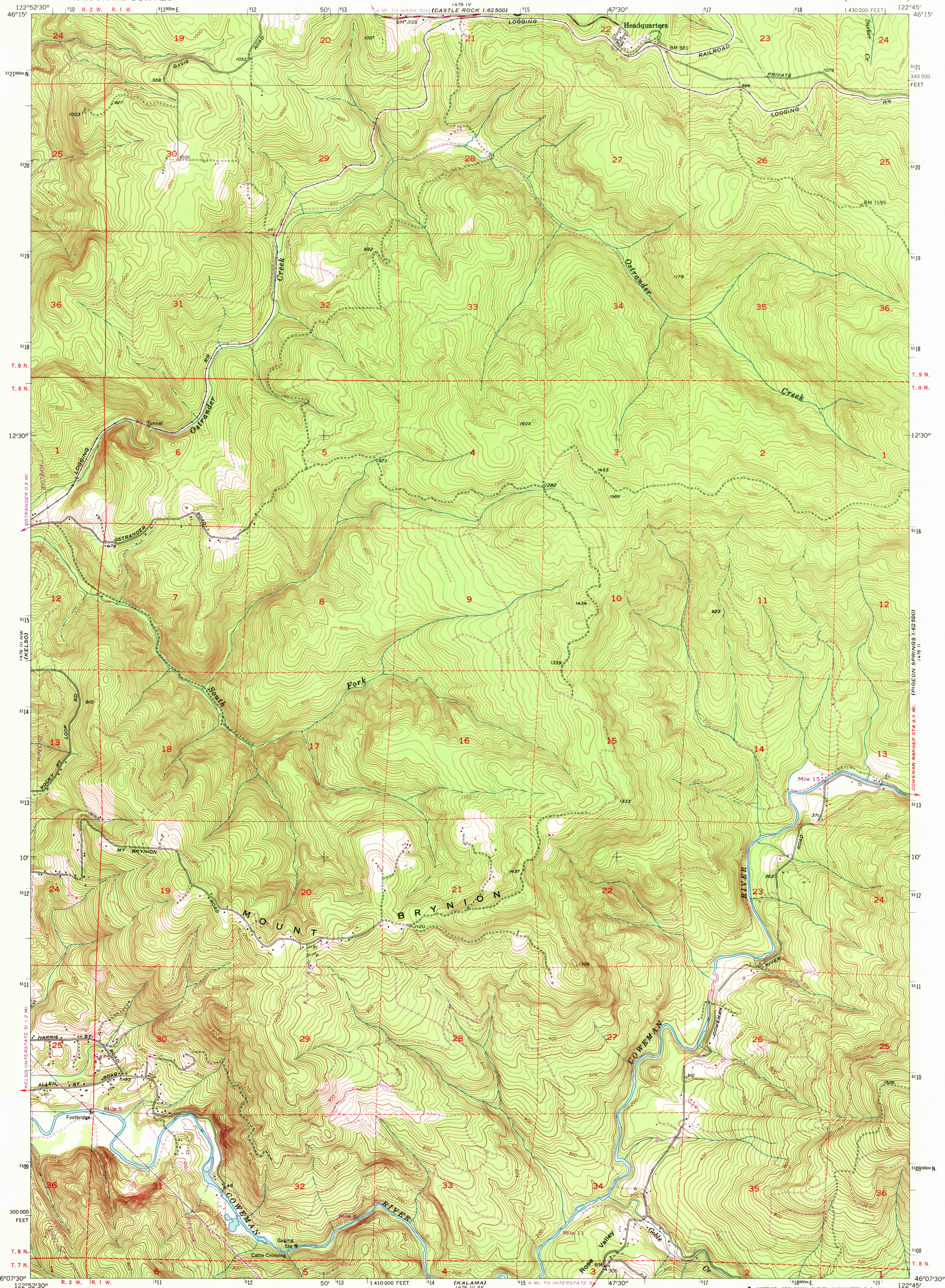


UNITED STATES  
DEPARTMENT OF THE INTERIOR  
GEOLOGICAL SURVEY

MT. BRYNION QUADRANGLE  
WASHINGTON—COWLITZ CO.  
7.5 MINUTE SERIES (TOPOGRAPHIC)



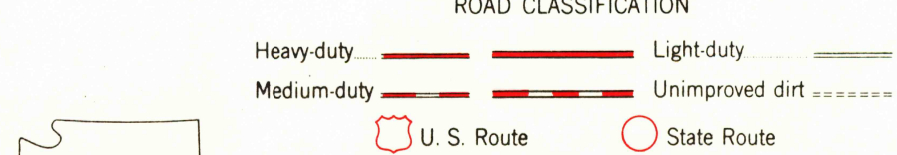
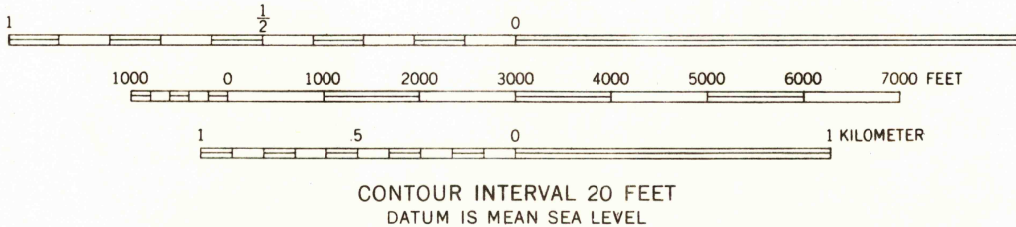
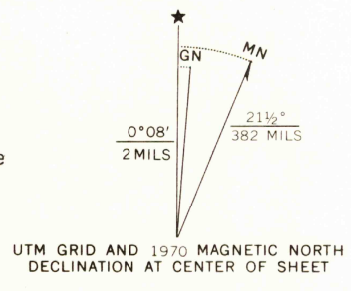
Mapped, edited, and published by the Geological Survey

Control by USGS, USC&GS, and USCE

Topography from aerial photographs by Kelsh plotter methods  
Aerial photographs taken 1951. Field check 1953

Polyconic projection. 1927 North American datum  
10,000-foot grid based on Washington coordinate system, south zone  
1000-meter Universal Transverse Mercator grid ticks,  
zone 10, shown in blue

Revisions shown in purple compiled from aerial photographs  
taken 1970. This information not field checked



MT. BRYNION, WASH.  
N4607.5—W12245/7.5

USGS  
HISTORICAL FILE  
TOPOGRAPHIC DIVISION

1953  
PHOTOGRAPHED 1970  
AMS 1476 III NE—SERIES V891

OCT 7 1971