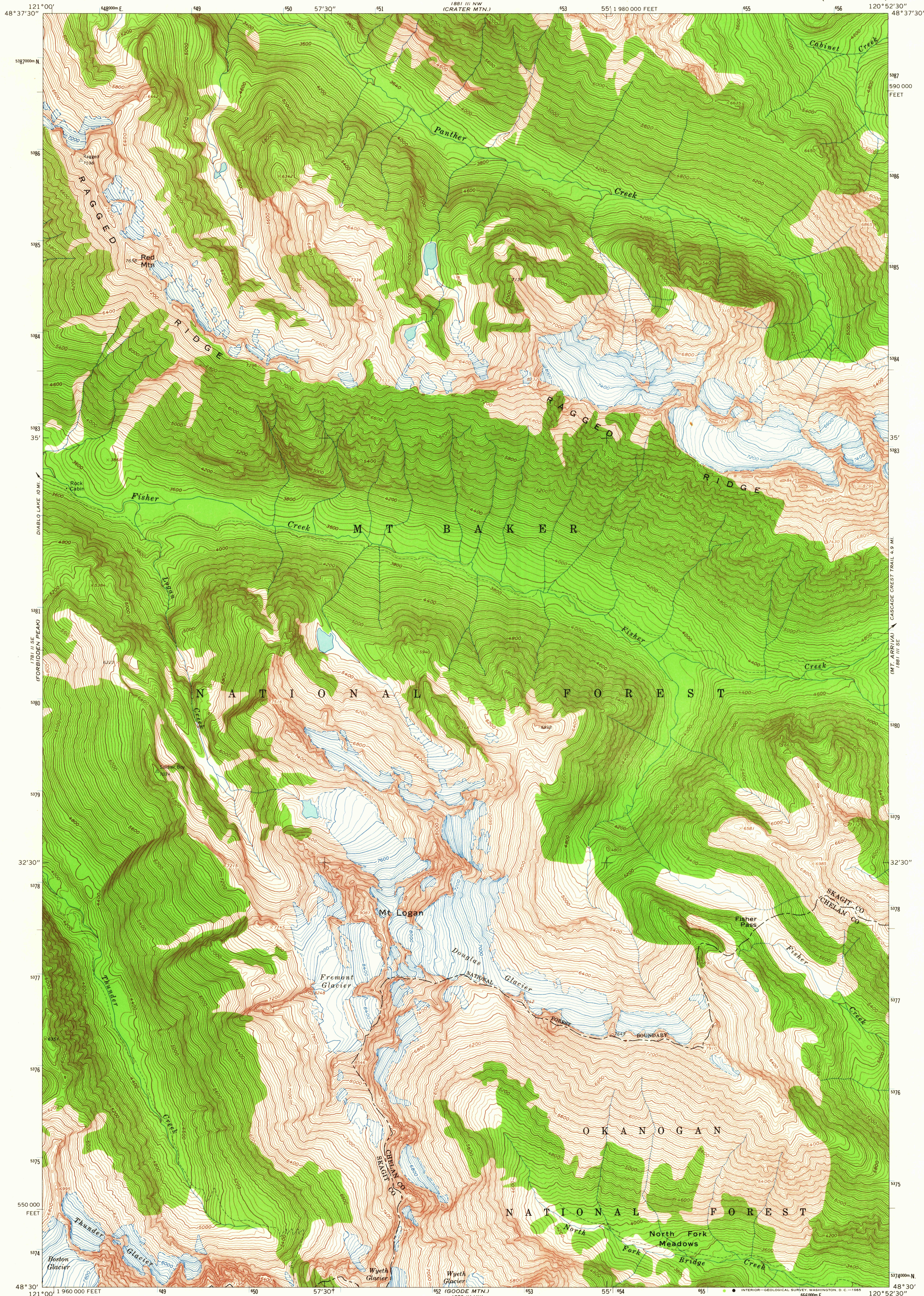


121° 00' W
48° 37' 30" N
(ROSS DAM)

UNITED STATES
DEPARTMENT OF THE INTERIOR
GEOLOGICAL SURVEY

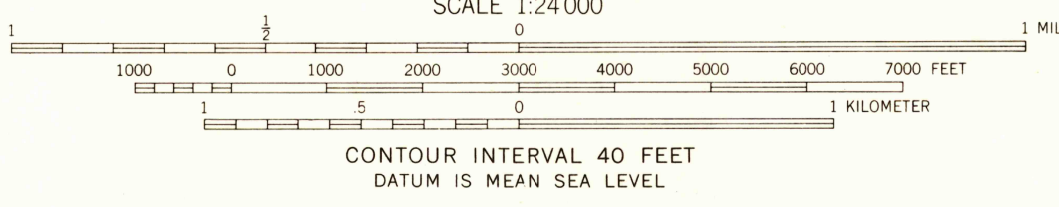
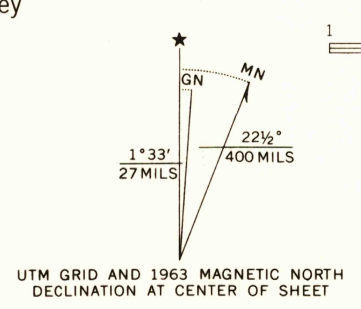
MT. LOGAN QUADRANGLE
WASHINGTON
7.5 MINUTE SERIES (TOPOGRAPHIC)

120° 52' 30" W
48° 37' 30" N
(AZURE PEAK)



(CASCADE PASS)
121° 00' W
48° 37' 30" N

Mapped, edited, and published by the Geological Survey
Control by USSS and USC&GS
Topography by photogrammetric methods from aerial
photographs taken 1958. Field checked 1963
Polyconic projection. 1927 North American datum
10,000-foot grid based on Washington coordinate system,
north zone
1000-meter Universal Transverse Mercator grid ticks,
zone 10, shown in blue
Where omitted, land lines have not been established



ROAD CLASSIFICATION
Trails

MT. LOGAN, WASH.
N4830—W12052 5/7.5

FOR SALE BY U. S. GEOLOGICAL SURVEY, DENVER 25, COLORADO OR WASHINGTON 25, D. C.
A FOLDER DESCRIBING TOPOGRAPHIC MAPS AND SYMBOLS IS AVAILABLE ON REQUEST

USGS
Historical File
Topographic Division
1963
AMS 1881 III SW—SERIES V891

U.S.G.S.
FILE COPY
TOPOGRAPHIC DIVISION

2620
DEC 9 1964