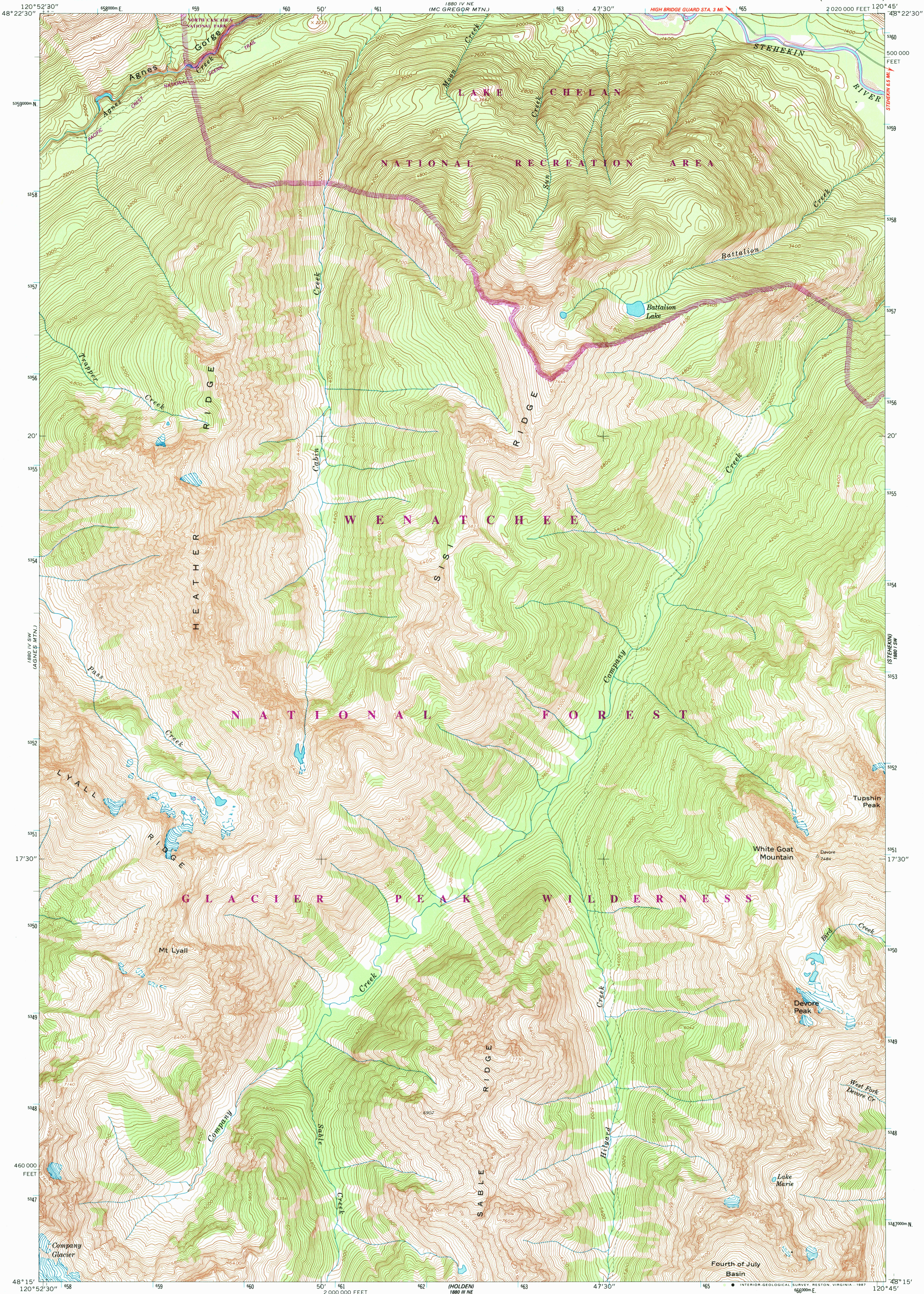


1880 IV NW
(GOODE MTN.)

UNITED STATES
DEPARTMENT OF THE INTERIOR
GEOLOGICAL SURVEY

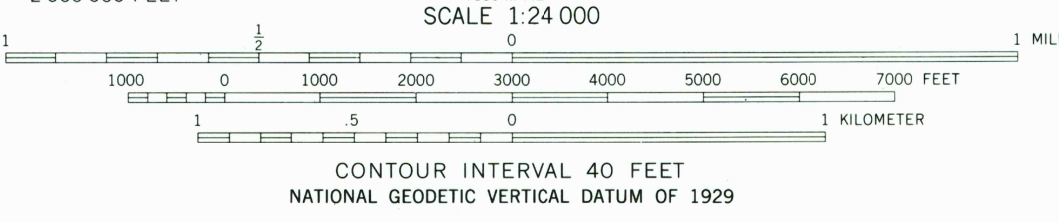
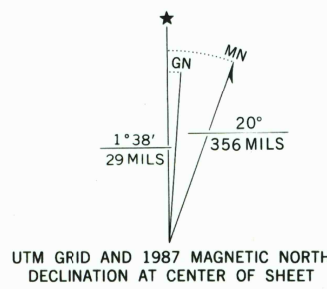
MT. LYALL QUADRANGLE
WASHINGTON—CHELAN CO.
7.5 MINUTE SERIES (TOPOGRAPHIC)

1880 I NW
(MC ALISTER MTN.)



1880 IV SW
(SUATTLE PASS)

Mapped, edited, and published by the Geological Survey
Control by USGS and NOS/NOAA
Topography by photogrammetric methods from aerial
photographs taken 1958. Field checked 1963
Polyconic projection. 1927 North American Datum
10,000-foot grid based on Washington coordinate system,
north zone
1000-meter Universal Transverse Mercator grid ticks,
zone 10, shown in blue
Land lines have not been established in this area
To place on the predicted North American Datum 1983
move the projection lines 21 meters north and
89 meters east as shown by dashed corner ticks
There may be private inholdings within the boundaries
of the National or State reservations shown on this map



ROAD CLASSIFICATION
Light duty

MT. LYALL, WASH.
48120-C7-TF-024

Revisions shown in purple and woodland
compiled from aerial photographs taken 1984
and other source data. Partial field check
by U. S. Forest Service. Map edited 1987

1963
PHOTOREVISED 1987
DMA 1880 IV SE—SERIES V891

1880 I SW
(PINNACLE MTN.)

