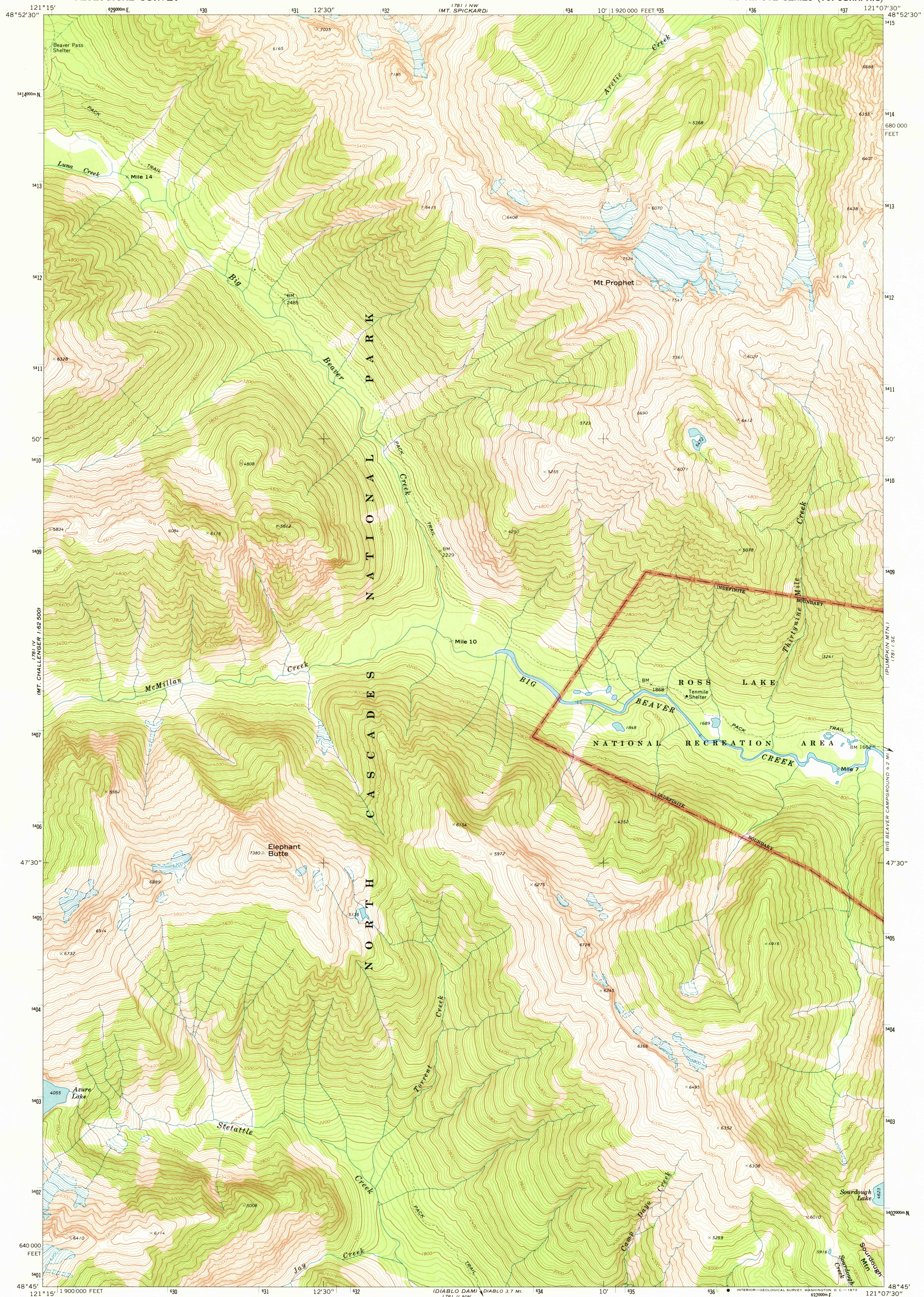
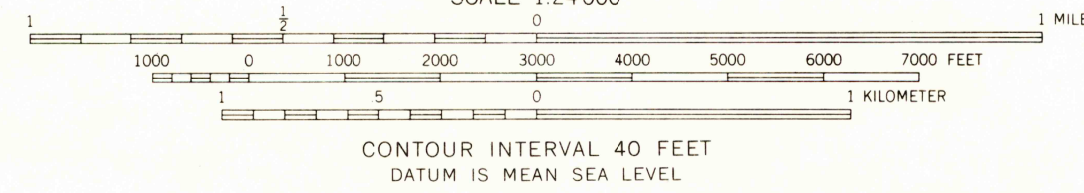
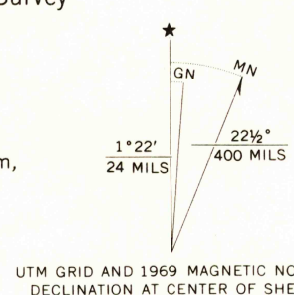


UNITED STATES  
DEPARTMENT OF THE INTERIOR  
GEOLOGICAL SURVEY

MT. PROPHET QUADRANGLE  
WASHINGTON—WHATCOM CO.  
7.5 MINUTE SERIES (TOPOGRAPHIC)



Mapped, edited, and published by the Geological Survey  
Control by USGS and USC&GS  
Topography by photogrammetric methods from aerial  
photographs taken 1968. Field checked 1969  
Polyconic projection. 1927 North American datum  
10,000-foot grid based on Washington coordinate system,  
north zone  
1000-meter Universal Transverse Mercator grid ticks,  
zone 10, shown in blue  
Land lines have not been established in this area



ROAD CLASSIFICATION  
Trails

MT. PROPHET, WASH.  
N4845—W12107.5/7.5

1969

AMS 1781 I SW—SERIES V891

THIS MAP COMPLIES WITH NATIONAL MAP ACCURACY STANDARDS  
FOR SALE BY U.S. GEOLOGICAL SURVEY, DENVER, COLORADO 80225, OR WASHINGTON, D.C. 20242  
A FOLDER DESCRIBING TOPOGRAPHIC MAPS AND SYMBOLS IS AVAILABLE ON REQUEST

FEB 26 1973

USGS  
HISTORICAL FILE  
TOPOGRAPHIC DIVISION  
2735