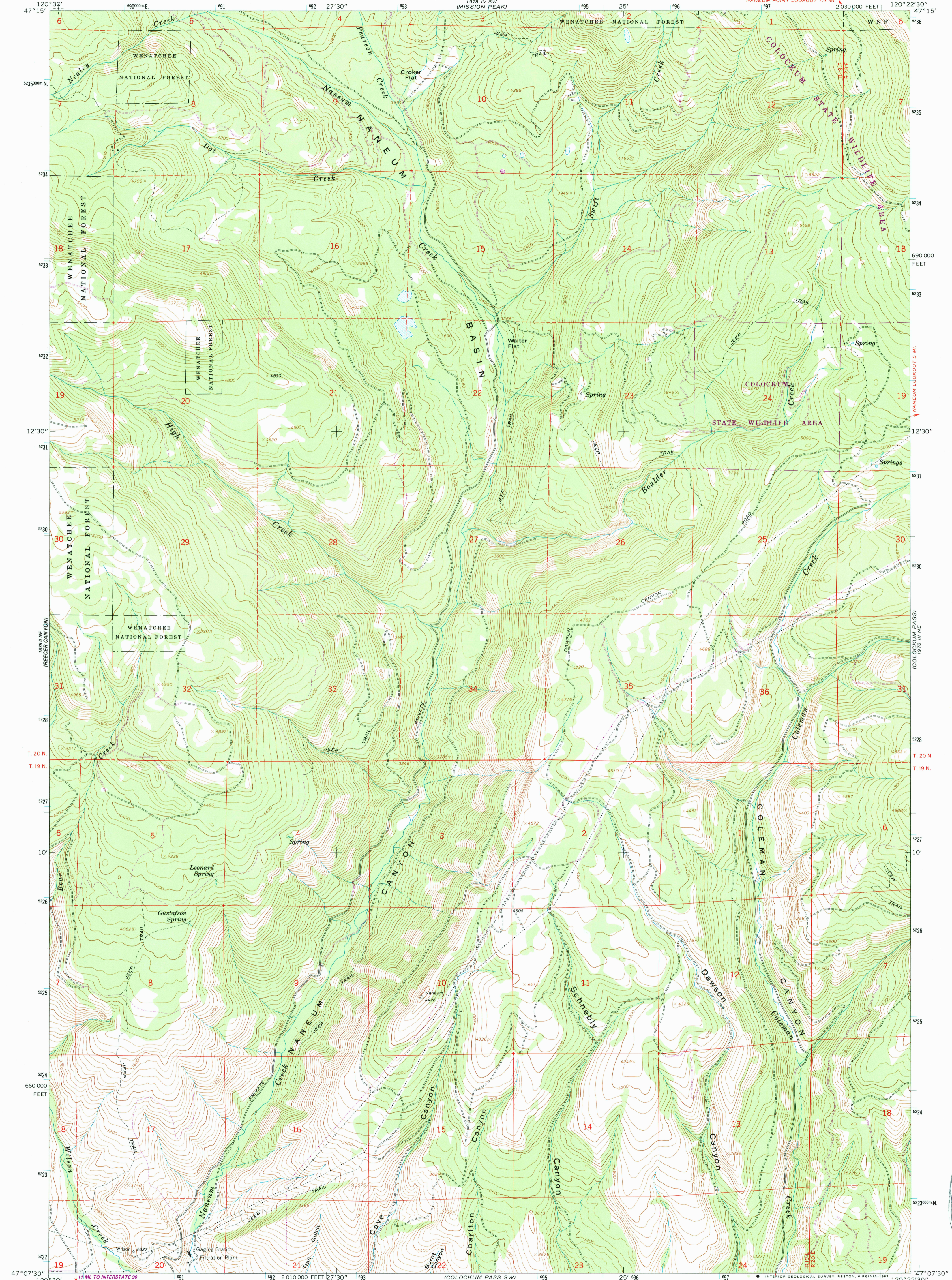


(SW 1/4) (PASS)

(NE 1/4) (PASS)



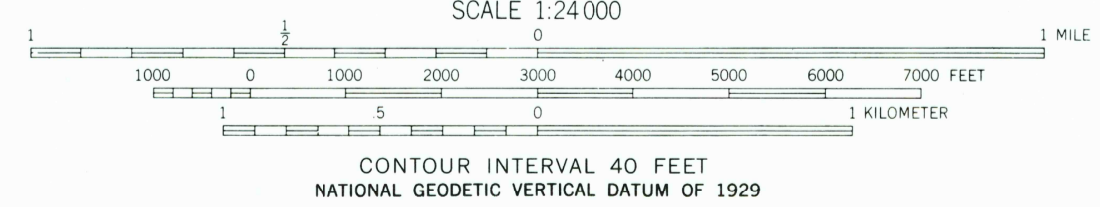
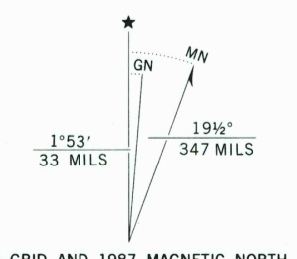
(ELLENSBURG NORTH)

(COLOCKUM PASS SW)

Mapped, edited, and published by the Geological Survey  
Control by USGS, NOS/NOAA, and USCE

Topography by photogrammetric methods from aerial photographs taken 1964 and 1965. Field checked 1966  
Polyconic projection. 1927 North American Datum  
10,000-foot grid based on Washington coordinate system, south zone  
1000-meter Universal Transverse Mercator grid ticks, zone 10, shown in blue

To place on the predicted North American Datum 1983 move the projection lines 20 meters north and 89 meters east as shown by dashed corner ticks  
There may be private inholdings within the boundaries of the National or State reservations shown on this map



ROAD CLASSIFICATION  
Light duty ———— Unimproved dirt - - - - -

THIS MAP COMPLIES WITH NATIONAL MAP ACCURACY STANDARDS  
FOR SALE BY U. S. GEOLOGICAL SURVEY  
DENVER, COLORADO 80225, OR RESTON, VIRGINIA 22092  
A FOLDER DESCRIBING TOPOGRAPHIC MAPS AND SYMBOLS IS AVAILABLE ON REQUEST

Revisions shown in purple compiled from aerial photographs taken 1983 and other source data. Partial field check by U. S. Forest Service. Map edited 1987

NANEUM CANYON, WASH.  
47120-B4-TF-024

1966  
PHOTOREVISED 1987  
DMA 1978 III NW—SERIES V891

