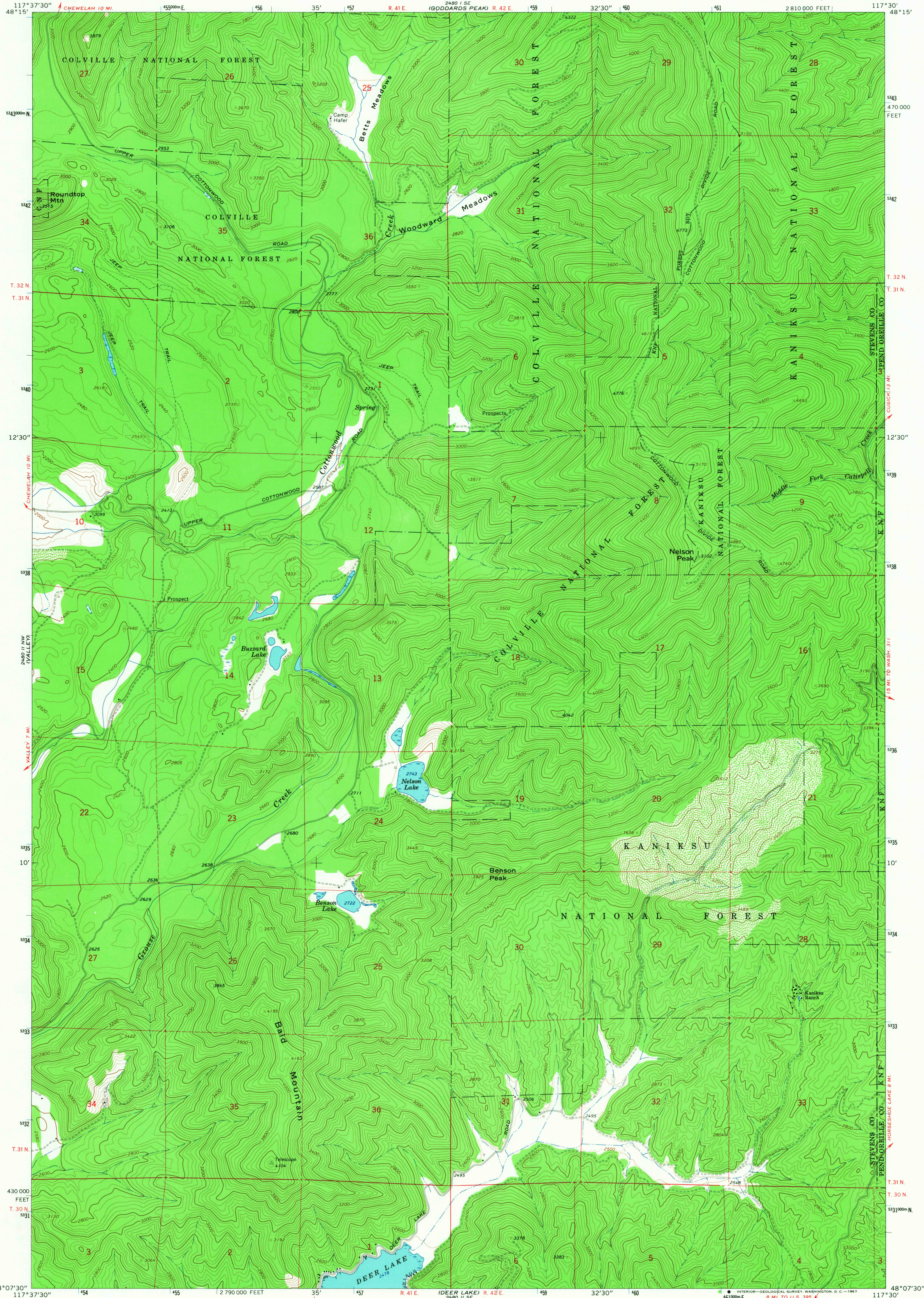


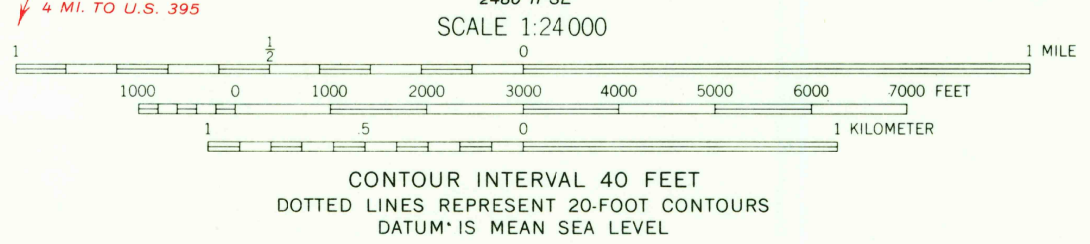
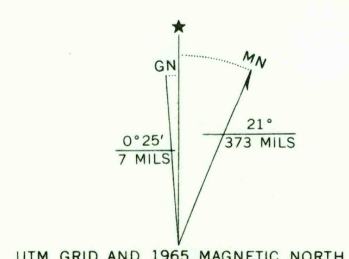
2480 SW
(CHEWELAH)

UNITED STATES
DEPARTMENT OF THE INTERIOR
GEOLOGICAL SURVEY

NELSON PEAK QUADRANGLE
WASHINGTON
7.5 MINUTE SERIES (TOPOGRAPHIC)



Mapped, edited, and published by the Geological Survey
Control by USGS and USC&GS
Topography by photogrammetric methods from aerial
photographs taken 1962. Field checked 1965
Polyconic projection. 1927 North American datum
10,000-foot grid based on Washington coordinate system,
north zone
1000-meter Universal Transverse Mercator grid ticks,
zone 11, shown in blue



ROAD CLASSIFICATION
Light-duty Unimproved dirt

USGS
Historical File
Topographic Division
NELSON PEAK, WASH.
N4807.5-W11730/7.5
1965
AMS 2480 II NE-SERIES V891

3745
JUN 14 1967