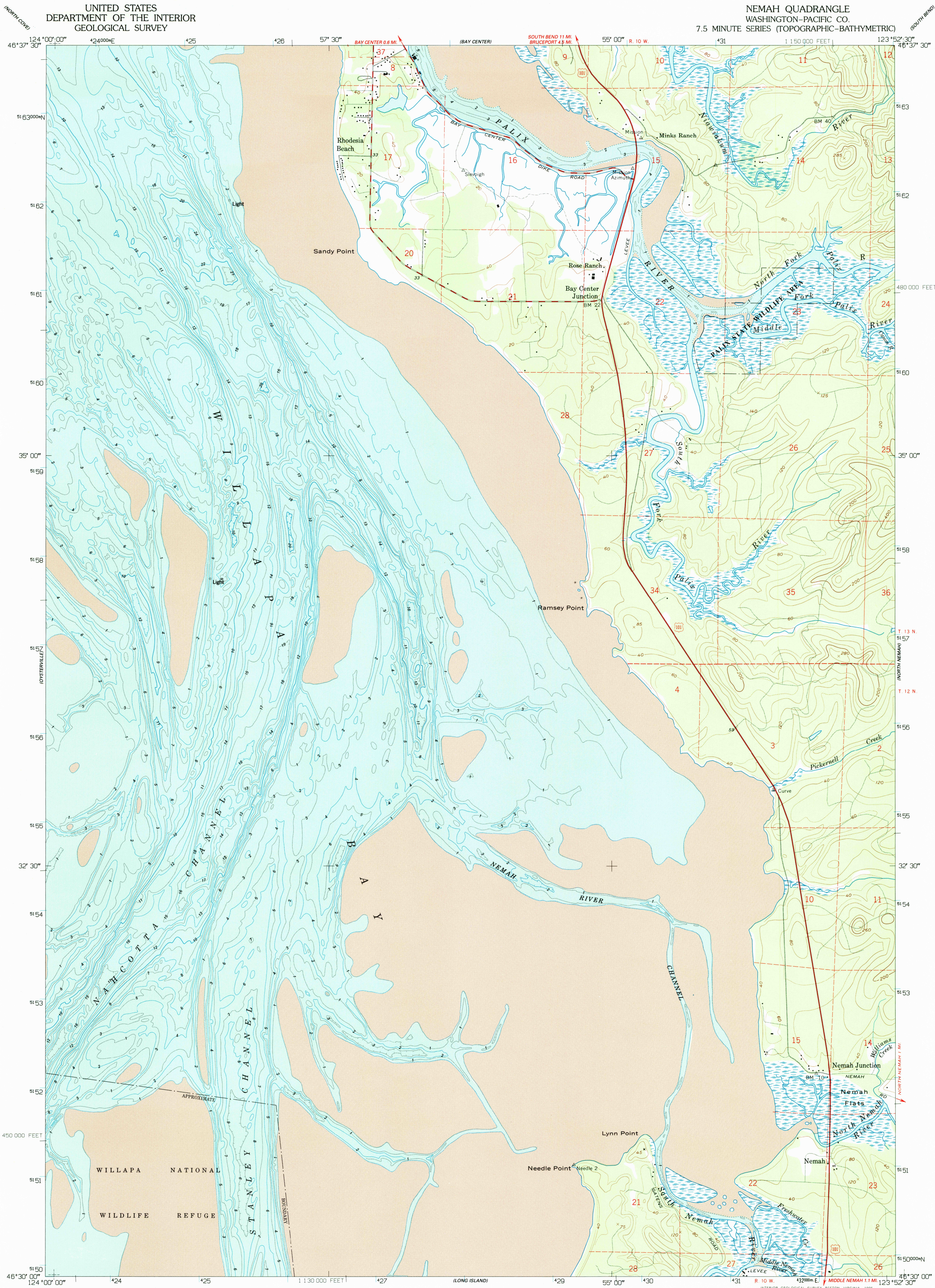


UNITED STATES  
DEPARTMENT OF THE INTERIOR  
GEOLOGICAL SURVEY

NEMAH QUADRANGLE  
WASHINGTON-PACIFIC CO.  
7.5 MINUTE SERIES (TOPOGRAPHIC-BATHYMETRIC)



CONVERSION  
SCALES

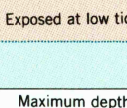


Feet	Meters
1	3048
2	6096
3	9144
4	12192
5	15240
6	18288
7	21336
8	24384
9	27432
10	30480

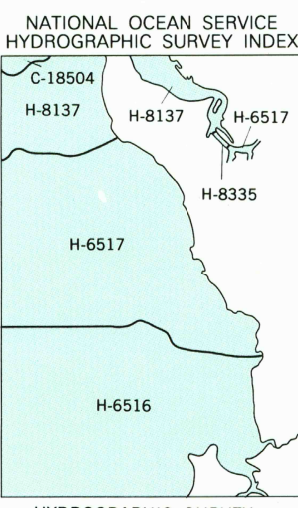
To convert feet to meters  
multiply by .3048

To convert meters to feet  
multiply by 3.2808

DEPTH GRADIENT



Produced by the United States Geological Survey  
Control by USGS and NOS/NOAA  
Compiled from aerial photographs taken 1950. Field checked 1957  
Revised from aerial photographs taken 1990 and other sources  
Map edited 1994. Contours and land elevations have not been  
revised and may conflict with other content  
Bathymetry compiled by the National Ocean Service from  
tide-coordinated hydrographic surveys. This information is not  
intended for navigational purposes.  
Mean low water (dotted) line and mean high water (heavy solid) line  
compiled by NOS from tide-coordinated aerial photography. Apparent  
shoreline (outer edge of vegetation) shown by light solid line  
North American Datum of 1927 (NAD 27). Projection and  
blue 1000-meter Universal Transverse Mercator ticks, zone 10  
10000-foot ticks - Washington Coordinate System, south zone  
North American Datum of 1983 (NAD 83) is shown by dashed  
corner ticks. The values of the shift between NAD 27 and NAD 83  
for 7.5-minute intersections are obtainable from National Geodetic  
Survey NADCON software  
There may be private inholdings within the boundaries of the  
National or State reservations shown on this map

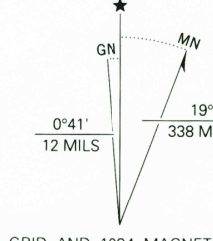


SURVEY NUMBER	SURVEY DATE	SURVEY SCALE	SURVEY LINE SPACING (NAUT. MILES)
H-6516	1939	1:10,000	01-09
H-6517	1939	1:10,000	02-12
H-8137	1954	1:10,000	02-08
H-8335	1954	1:10,000	01-03

SCALE 1:24 000

CONTOUR INTERVAL 40 FEET  
DOTTED LINES REPRESENT 20 FOOT CONTOURS  
NATIONAL GEODETIC VERTICAL DATUM OF 1929  
BATHYMETRIC CONTOUR INTERVAL 2 METERS WITH SUPPLEMENTARY  
1 METER CONTOURS - DATUM IS MEAN LOWER LOW WATER  
THE RELATIONSHIP BETWEEN THE TWO DATUMS IS VARIABLE  
THE MEAN RANGE OF TIDE IS APPROXIMATELY 2.4 METERS

THIS MAP COMPLIES WITH NATIONAL MAP ACCURACY STANDARDS  
BATHYMETRIC SURVEY DATA COMPLIES WITH INTERNATIONAL HYDROGRAPHIC  
ORGANIZATION (IHO) SPECIAL PUBLICATION 44 ACCURACY STANDARDS  
AND/OR STANDARDS USED AT THE DATE OF THE SURVEY  
FOR SALE BY U.S. GEOLOGICAL SURVEY  
DENVER, COLORADO 80225, OR RESTON, VIRGINIA 22092  
AND NATIONAL OCEAN SERVICE, ROCKVILLE, MARYLAND 20852  
A FOLDER DESCRIBING TOPOGRAPHIC MAPS AND SYMBOLS IS AVAILABLE ON REQUEST



NEMAH, WA  
46123-E8-TB-024  
1957  
REVISED 1994  
DMA 1277 III SW-SERIES V891

