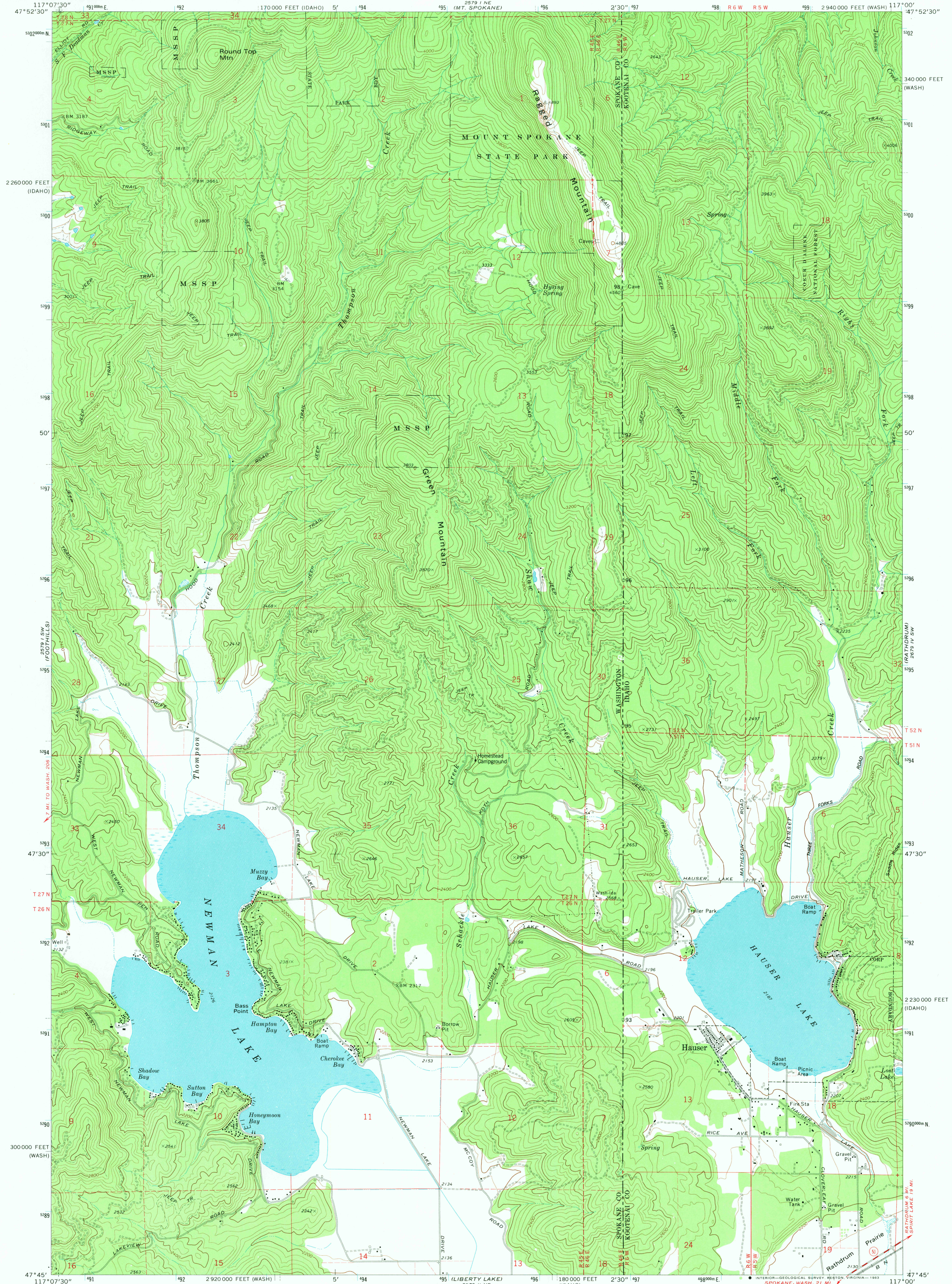
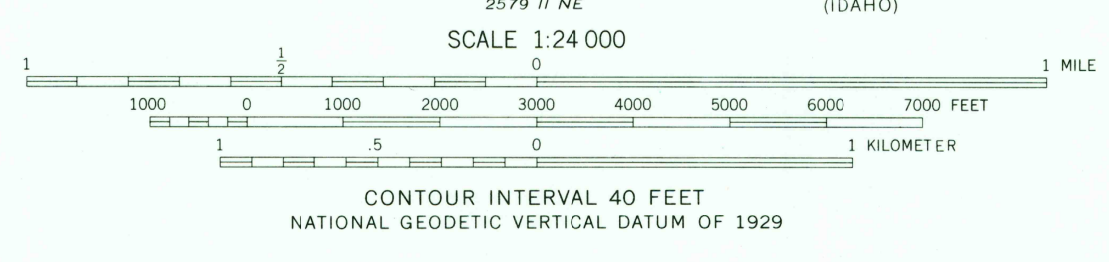
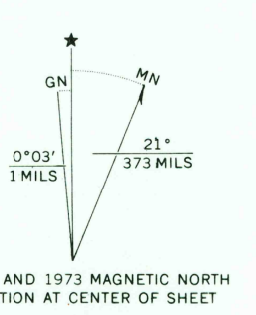


UNITED STATES
DEPARTMENT OF THE INTERIOR
GEOLOGICAL SURVEY

NEWMAN LAKE QUADRANGLE
WASHINGTON—IDAHO
7.5 MINUTE SERIES (TOPOGRAPHIC)
SE 1/4 MT. SPOKANE 15' QUADRANGLE



Mapped, edited, and published by the Geological Survey
Control by USGS and NOS/NOAA
Topography by photogrammetric methods from aerial photographs taken 1972. Field checked 1973
Projection: Washington coordinate system, north zone (Lambert conformal conic)
10,000-foot grid ticks based on Washington coordinate system, north zone and Idaho coordinate system, west zone
1000-meter Universal Transverse Mercator grid ticks, zone 11, shown in blue.
To place on the predicted North American Datum 1983 move the projection lines 14 meters north and 78 meters east as shown by dashed corner ticks
Fine red dashed lines indicate selected fence lines
There may be private inholdings within the boundaries of the National or State reservations shown on this map



ROAD CLASSIFICATION

Primary highway, hard surface	Light-duty road, hard or improved surface
Secondary highway, hard surface	Unimproved road
Interstate Route	U. S. Route
	State Route

NEWMAN LAKE, WASH.—IDAHO
SE 1/4 MT. SPOKANE 15' QUADRANGLE
N4745—W11700/7.5
1973
DMA 2579 I SE—SERIES V891

RETURN TO:
USGS AND HISTORICAL MAP ARCHIVES