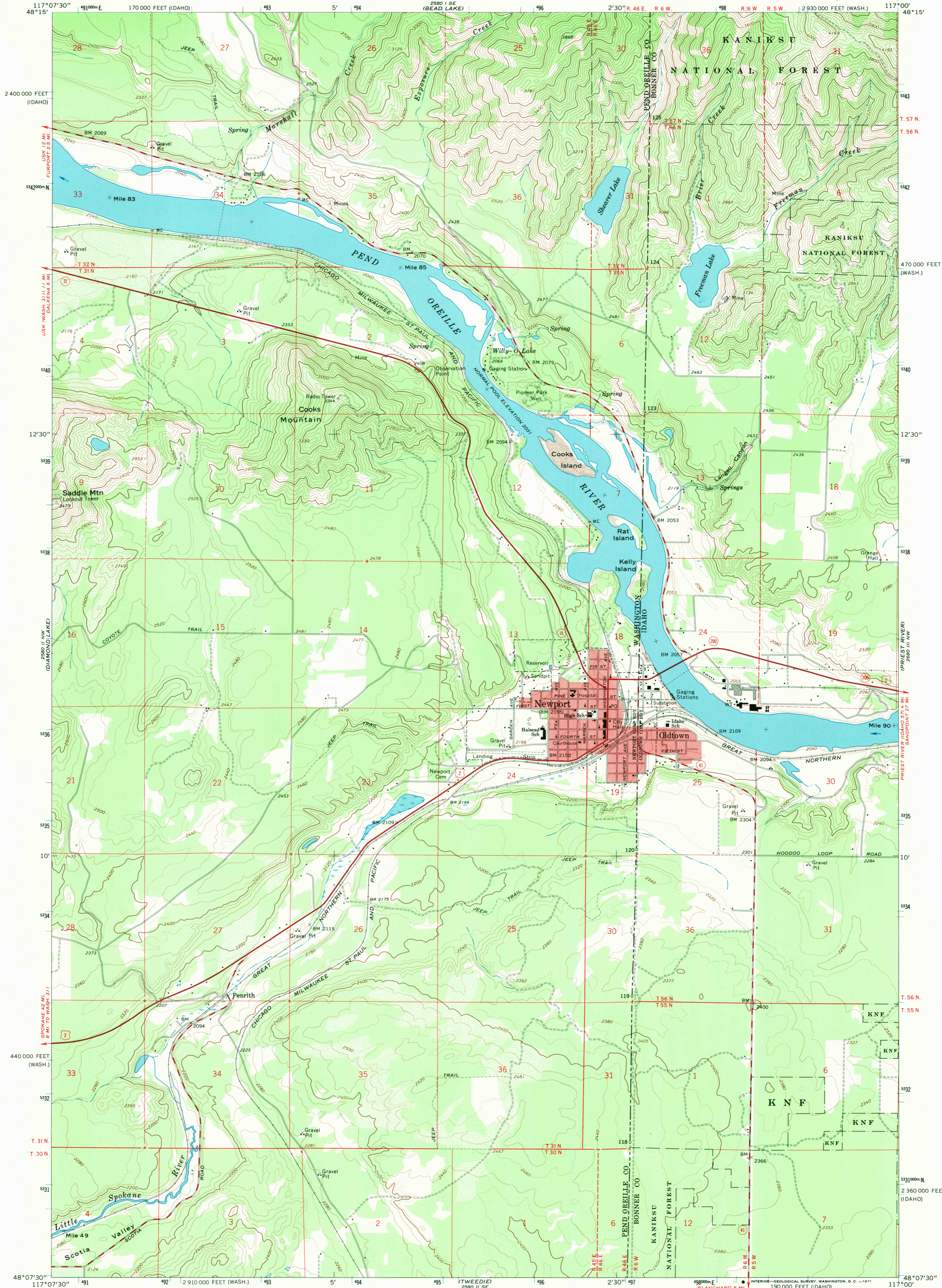
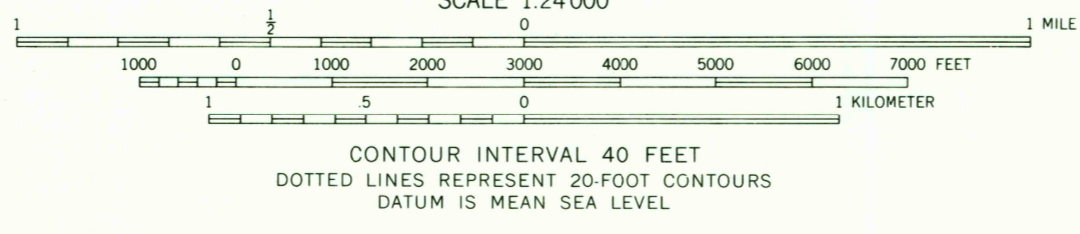
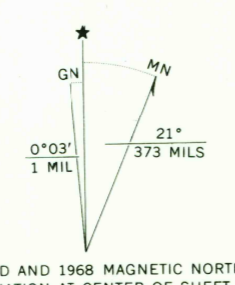


UNITED STATES
DEPARTMENT OF THE INTERIOR
GEOLOGICAL SURVEY

NEWPORT QUADRANGLE
WASHINGTON-IDAHO
7.5 MINUTE SERIES (TOPOGRAPHIC)



Mapped, edited, and published by the Geological Survey
Control by USGS and USC&GS
Topography by photogrammetric methods from aerial photographs taken 1965. Field checked 1968
Polyconic projection, 1927 North American datum
10,000-foot grids based on Washington coordinate system, north zone and Idaho coordinate system, west zone
1000-meter Universal Transverse Mercator grid ticks, zone 11, shown in blue
Red tint indicates areas in which only landmark buildings are shown
Fine red dashed lines indicate selected fence lines



ROAD CLASSIFICATION
 Primary highway, all weather, hard surface
 Secondary highway, all weather, hard surface
 Light duty road, all weather, improved surface
 Unimproved road, fair or dry weather
 U. S. Route
 State Route



THIS MAP COMPLIES WITH NATIONAL MAP ACCURACY STANDARDS
 FOR SALE BY U. S. GEOLOGICAL SURVEY, DENVER, COLORADO 80225, OR WASHINGTON, D. C. 20242
 A FOLDER DESCRIBING TOPOGRAPHIC MAPS AND SYMBOLS IS AVAILABLE ON REQUEST

NEWPORT, WASH. - IDAHO
 N4807.5 - W11700/7.5
 1968
 AMS 2580 II NE - SERIES V891

U.S.G.S.
 FILE COPY
 TOPOGRAPHIC DIVISION
 3160
 MAY 4 1971