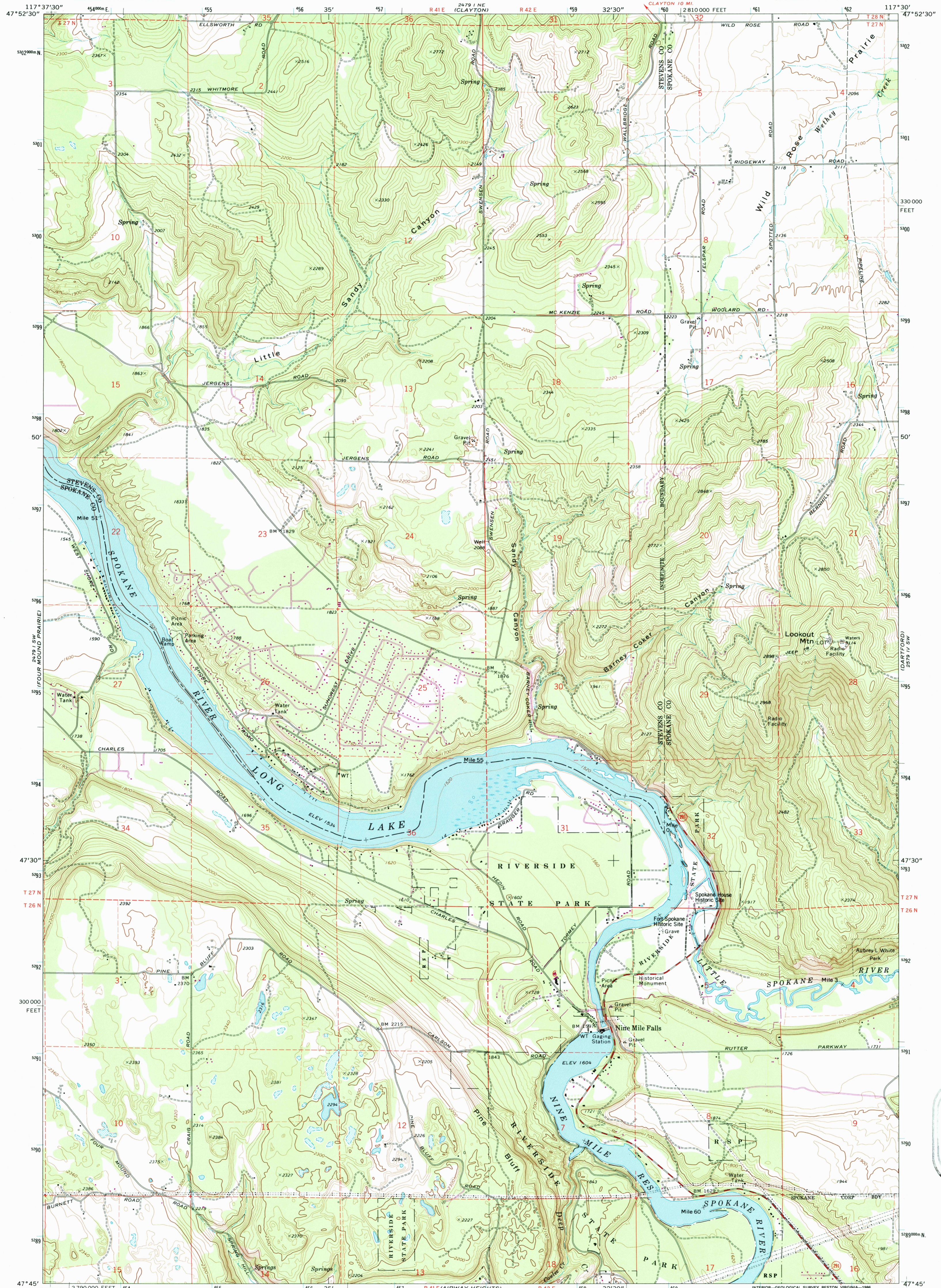


2479 14 W
T27 N

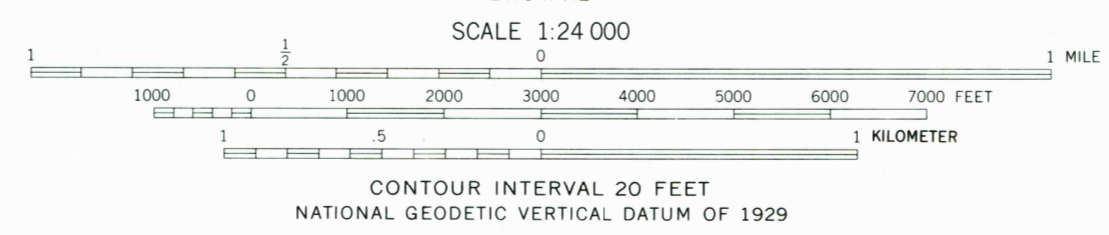
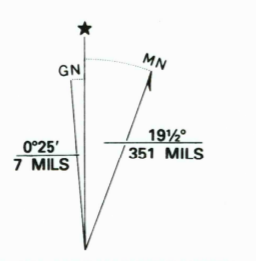
UNITED STATES
DEPARTMENT OF THE INTERIOR
GEOLOGICAL SURVEY

NINE MILE FALLS QUADRANGLE
WASHINGTON
7.5 MINUTE SERIES (TOPOGRAPHIC)
SE/4 CLAYTON 15' QUADRANGLE

2479 14 W
T27 N
DEEP PARK



Mapped, edited, and published by the Geological Survey
Control by USGS and NOS/NOAA
Topography by photogrammetric methods from aerial photographs taken 1972. Field checked 1973
Underwater contours by Washington Water Power Co.
Projection and 10,000-foot grid ticks: Washington coordinate system, north zone (Lambert conformal conic)
1000-meter Universal Transverse Mercator grid ticks, zone 11, shown in blue. 1927 North American datum
To place on the predicted North American Datum 1983, move the projection lines 15 meters north and 80 meters east as shown by dashed corner ticks
There may be private inholdings within the boundaries of the National or State reservations shown on this map



CONTOUR INTERVAL 20 FEET
NATIONAL GEODETIC VERTICAL DATUM OF 1929

THIS MAP COMPLIES WITH MAP ACCURACY STANDARDS
FOR SALE BY U.S. GEOLOGICAL SURVEY, P.O. BOX 25286, DENVER, COLORADO 80225
A FOLDER DESCRIBING TOPOGRAPHIC MAPS AND SYMBOLS IS AVAILABLE ON REQUEST



ROAD CLASSIFICATION

Primary highway, hard surface	Light-duty road, hard or improved surface
Secondary highway, hard surface	Unimproved road
Interstate Route	U. S. Route
	State Route

NINE MILE FALLS, WASH.
SE/4 CLAYTON 15' QUADRANGLE
47117-05-TF-024

1973
PHOTOREVISED 1986
DMA 2479 1 SE-SERIES Y891
Revisions shown in purple compiled from aerial photographs taken 1982 and other sources
This information not field checked. Map edited 1986

U.S. GEOLOGICAL SURVEY
MAP DIVISION
FEB 28 1988
REC'D FILE COPY

