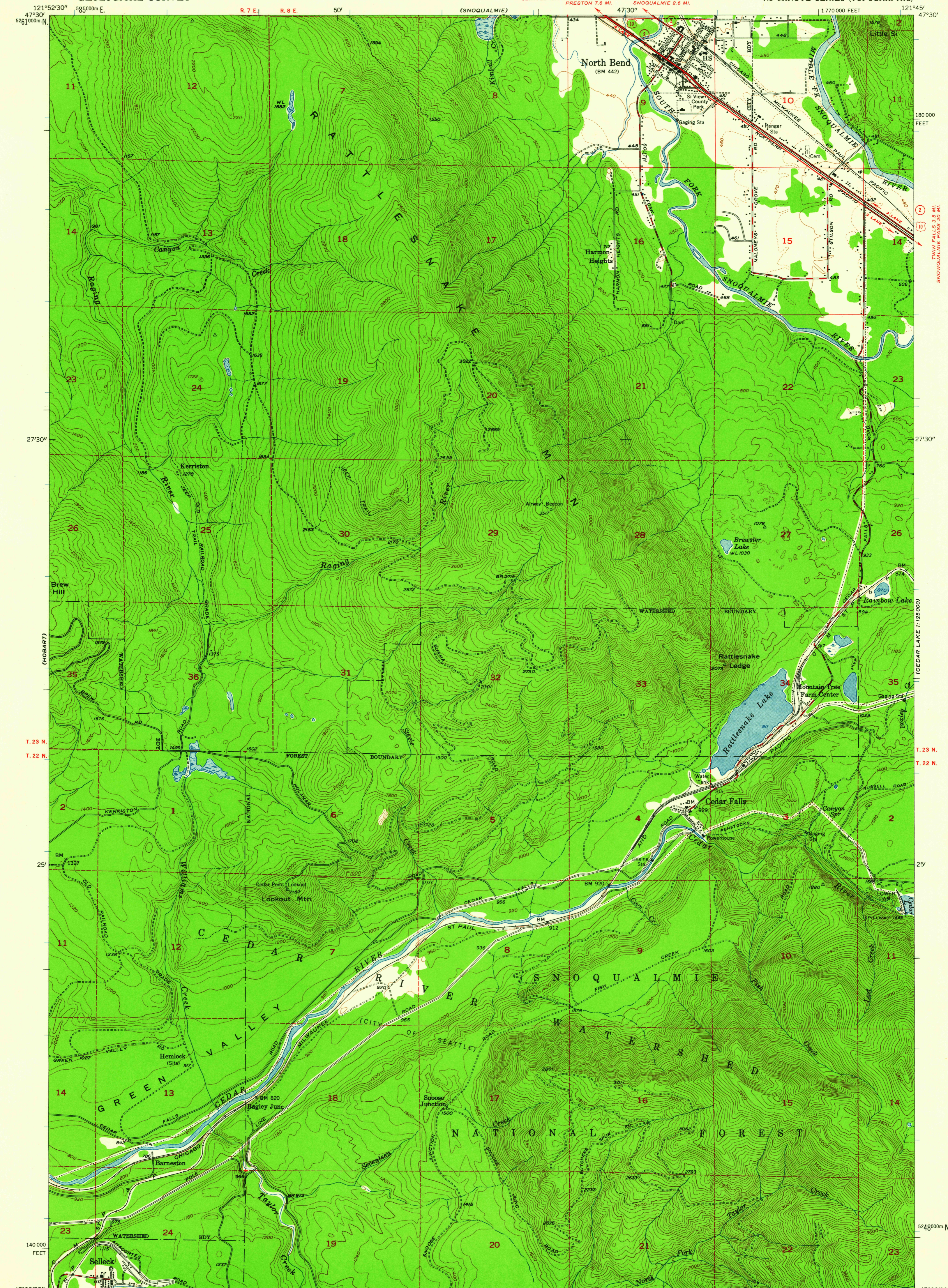


UNITED STATES
DEPARTMENT OF THE INTERIOR
GEOLOGICAL SURVEY

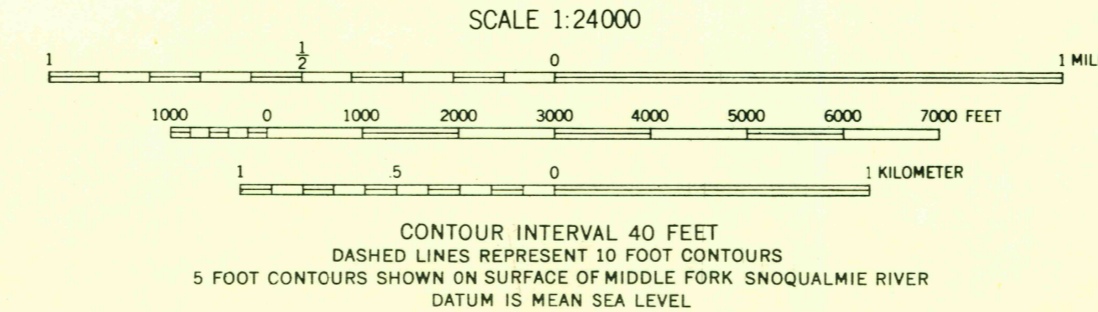
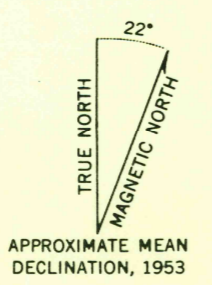
NORTH BEND QUADRANGLE
WASHINGTON—KING CO.
7.5 MINUTE SERIES (TOPOGRAPHIC)

(FALL CITY)

(SULTAN 1:125000)



Maped, edited, and published by the Geological Survey
Control by USGS and USC&GS
Topography from aerial photographs by multiplex methods
Aerial photographs taken 1952. Field check 1953
Polyconic projection. 1927 North American datum
10,000-foot grid based on Washington coordinate system, north zone
Travel within the Cedar River Watershed area is restricted
Dashed land lines indicate approximate locations
Unchecked elevations are shown in brown
1000-meter Universal Transverse Mercator grid ticks,
zone 10, shown in blue



ROAD CLASSIFICATION

Heavy-duty	Light-duty
Medium-duty	Unimproved dirt
U.S. Route	State Route

NORTH BEND, WASH.
N4722.5-W12145.7/7.5

FOR SALE BY U. S. GEOLOGICAL SURVEY, DENVER 25, COLORADO OR WASHINGTON 25, D. C.
A FOLDER DESCRIBING TOPOGRAPHIC MAPS AND SYMBOLS IS AVAILABLE ON REQUEST

USGS
Historical File
Topographic Division

1953

U.S.G.S.
FILE COPY
TOPOGRAPHIC DIVISION

JUN 16 1960

3090