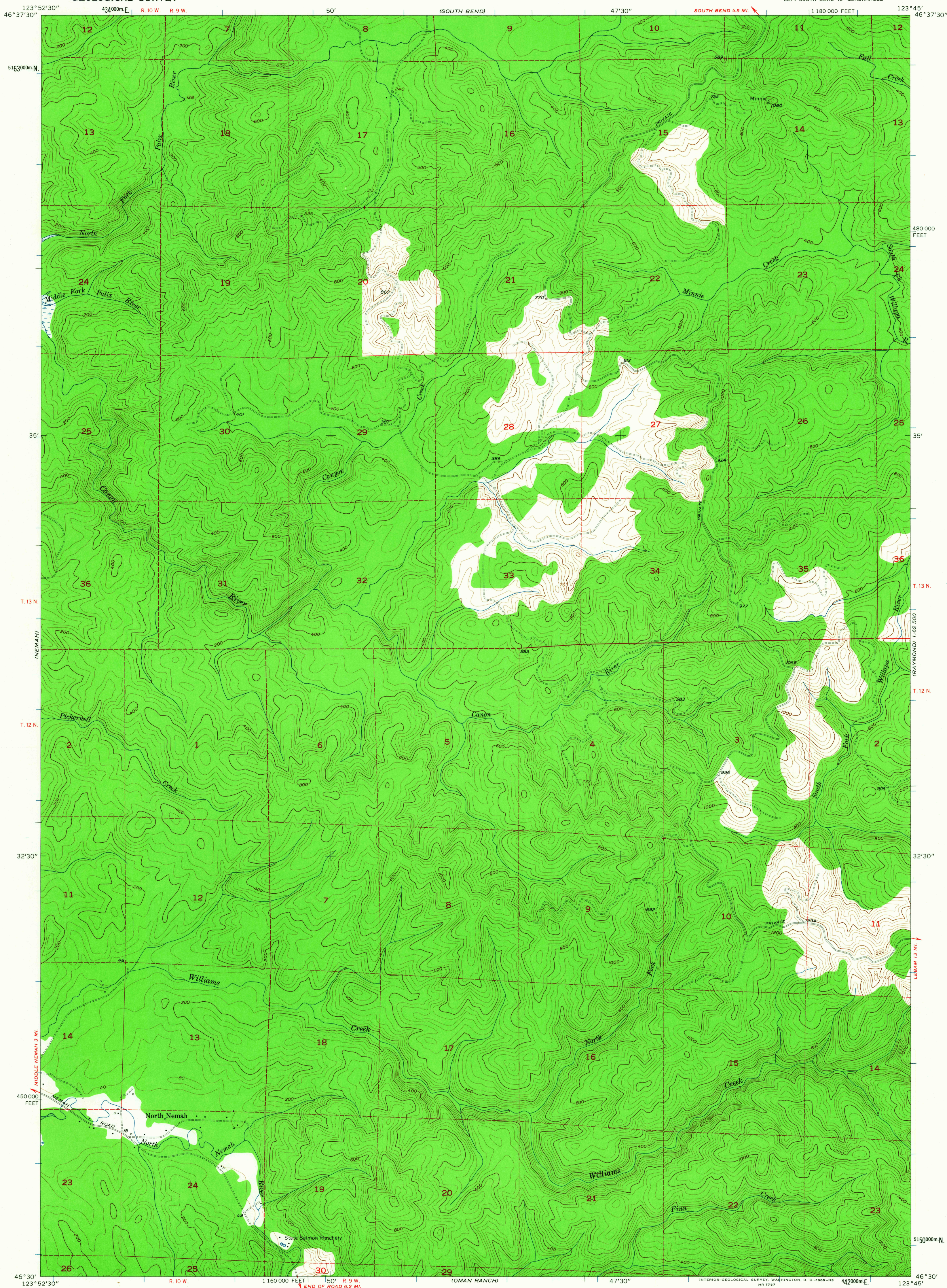
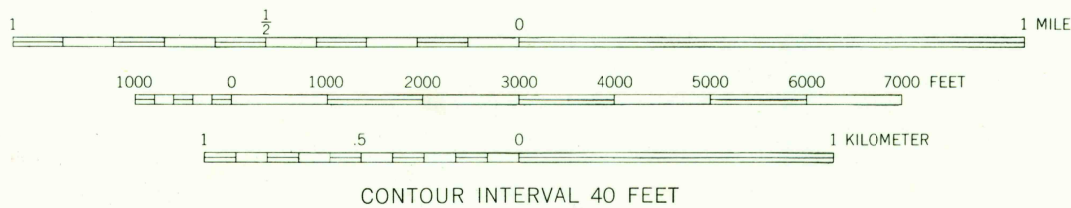
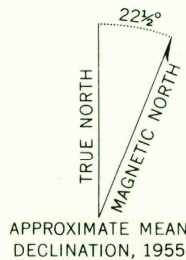


UNITED STATES
DEPARTMENT OF THE INTERIOR
GEOLOGICAL SURVEY

NORTH NEMAH QUADRANGLE
WASHINGTON-PACIFIC CO.
7.5 MINUTE SERIES (TOPOGRAPHIC)
SE/4 SOUTH BEND 15' QUADRANGLE



Mapped, edited, and published by the Geological Survey
Control by USGS and USC&GS
Topography from aerial photographs by multiplex methods
Aerial photographs taken 1953. Field check 1955
Polyconic projection. 1927 North American datum
10,000-foot grid based on Washington coordinate system,
south zone
1000-meter Universal Transverse Mercator grid ticks,
zone 10, shown in blue
Dashed land lines indicate approximate locations
Unchecked elevations are shown in brown



ROAD CLASSIFICATION
Light-duty ————— Unimproved dirt —————

NORTH NEMAH, WASH.
SE/4 SOUTH BEND 15' QUADRANGLE
N4630-W12345/7.5

USGS
Historical File
Topographic Division

1955

FOR SALE BY U. S. GEOLOGICAL SURVEY, DENVER 25, COLORADO OR WASHINGTON 25, D. C.
A FOLDER DESCRIBING TOPOGRAPHIC MAPS AND SYMBOLS IS AVAILABLE ON REQUEST

COPY
TOPOGRAPHIC DIVISION

3685