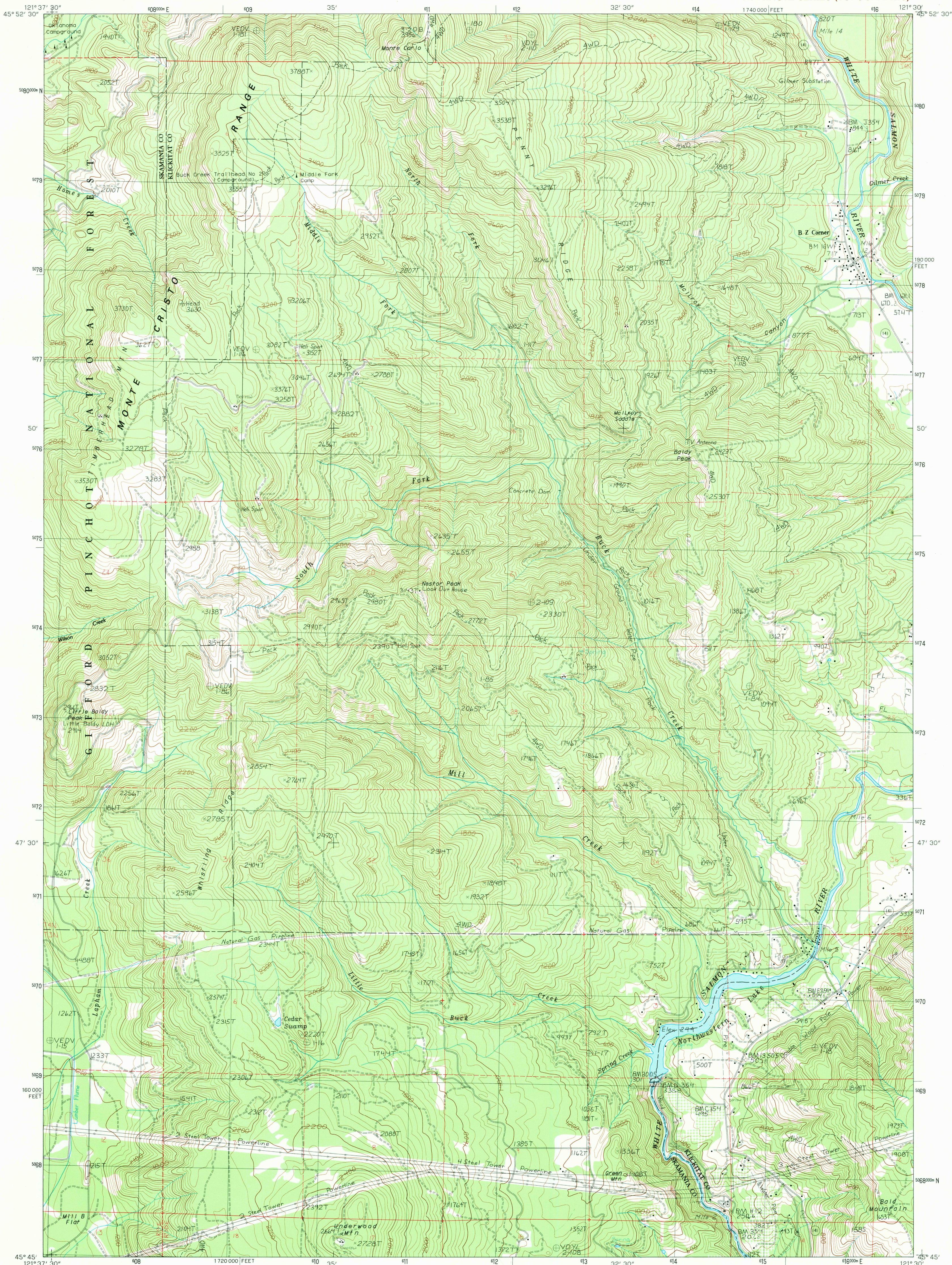


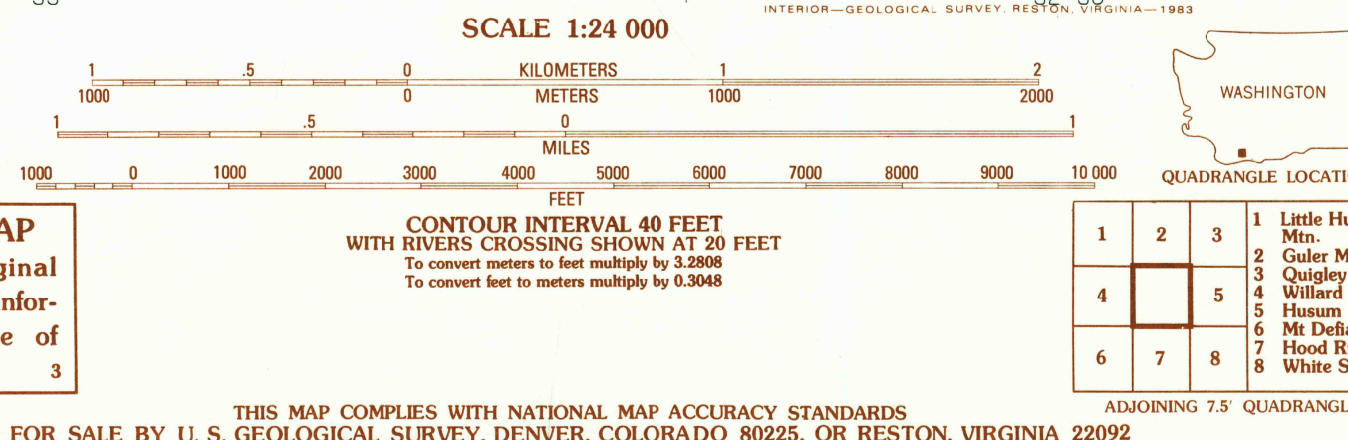
UNITED STATES  
DEPARTMENT OF THE INTERIOR  
GEOLOGICAL SURVEY

NORTHWESTERN LAKE QUADRANGLE  
WASHINGTON  
7.5 MINUTE SERIES (TOPOGRAPHIC)



PRODUCED BY THE UNITED STATES GEOLOGICAL SURVEY  
CONTROL BY: USGS, NOS/NOAA  
COMPILED FROM AERIAL PHOTOGRAPHS TAKEN: 1975-76  
FIELD CHECKED: 1979 MAP EDITED: 1983  
PROJECTION: LAMBERT CONFORMAL CONIC  
GRID: 1000-METER UNIVERSAL TRANSVERSE MERCATOR ZONE 10  
UTM GRID DECLINATION: 1983 EAST  
1980 MAGNETIC NORTH DECLINATION: 1983 EAST  
VERTICAL DATUM: NATIONAL GEODETIC DATUM OF 1929  
HORIZONTAL DATUM: 1983 NORTH AMERICAN DATUM  
To place on the predicted North American Datum of 1983,  
move the projection lines as shown by dashed corner ticks  
(22 meters north / 91 meters east)  
There may be private inholdings within the boundaries of any  
Federal and State Reservations shown on this map  
Where omitted, land lines have not been established

PROVISIONAL MAP  
Produced from original  
manuscript drawings. Infor-  
mation shown as of date of  
field check.



ROAD LEGEND  
Improved Road.....  
Unimproved Road.....  
Trail.....  
Interstate Route U.S. Route State Route

NORTHWESTERN LAKE, WASH.  
PROVISIONAL EDITION 1983

THIS MAP COMPLIES WITH NATIONAL MAP ACCURACY STANDARDS  
FOR SALE BY U. S. GEOLOGICAL SURVEY, DENVER, COLORADO 80225, OR RESTON, VIRGINIA 22092

45121-G5-TF-024

RETURN TO:  
USGS AND HISTORICAL MAP ARCHIVES

JUL 19 1983