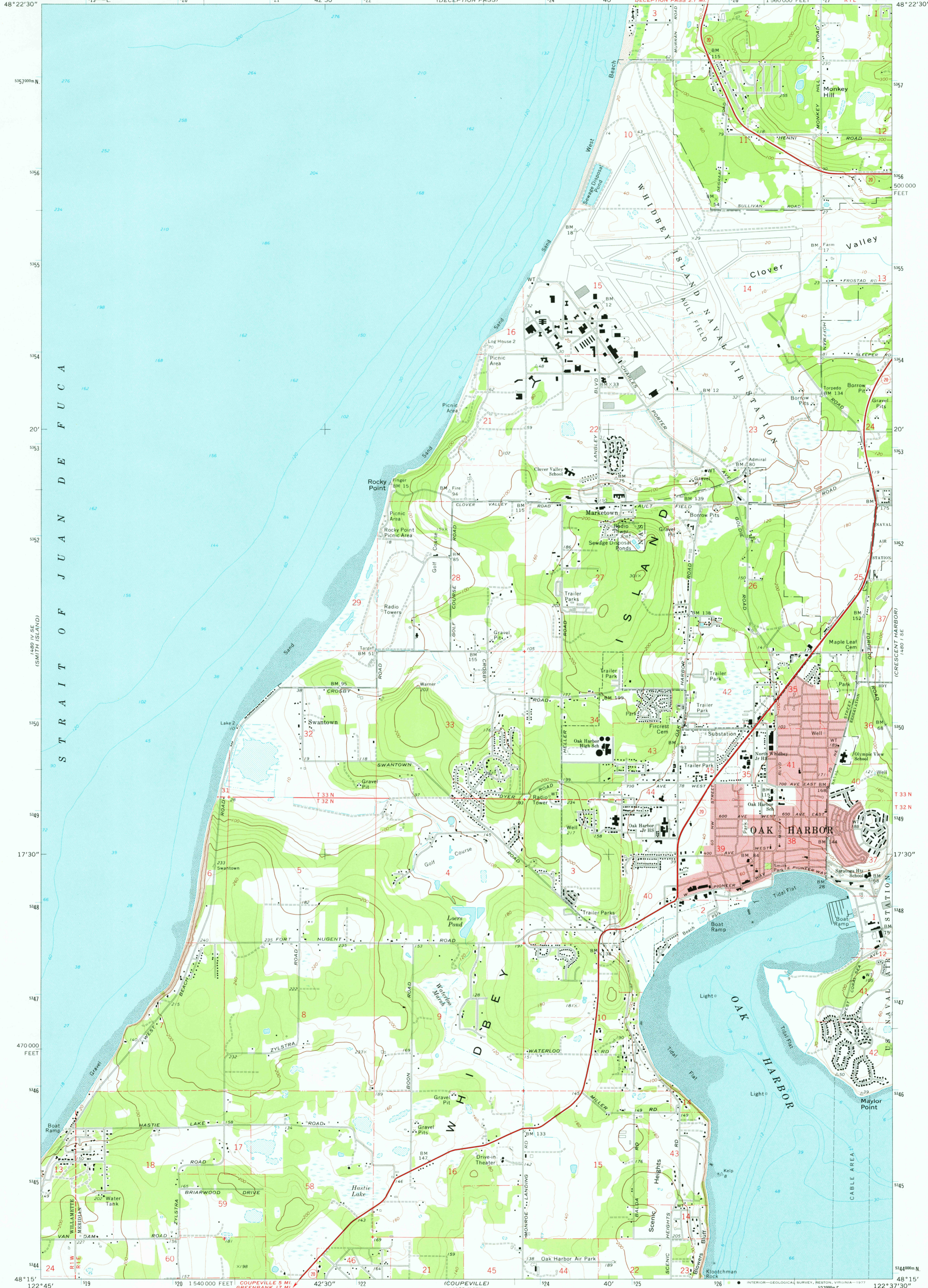


UNITED STATES  
DEPARTMENT OF THE INTERIOR  
GEOLOGICAL SURVEY

OAK HARBOR QUADRANGLE  
WASHINGTON—ISLAND CO.  
7.5 MINUTE SERIES (TOPOGRAPHIC)  
SW 4 DECEPTION PASS 15' QUADRANGLE

122°45' 122°30' 122°15' 122°00' 121°45' 121°30' 121°15' 121°00' 120°45' 120°30' 120°15' 120°00' 119°45' 119°30' 119°15' 119°00' 118°45' 118°30' 118°15' 118°00' 117°45' 117°30' 117°15' 117°00' 116°45' 116°30' 116°15' 116°00' 115°45' 115°30' 115°15' 115°00' 114°45' 114°30' 114°15' 114°00' 113°45' 113°30' 113°15' 113°00' 112°45' 112°30' 112°15' 112°00' 111°45' 111°30' 111°15' 111°00' 110°45' 110°30' 110°15' 110°00' 109°45' 109°30' 109°15' 109°00' 108°45' 108°30' 108°15' 108°00' 107°45' 107°30' 107°15' 107°00' 106°45' 106°30' 106°15' 106°00' 105°45' 105°30' 105°15' 105°00' 104°45' 104°30' 104°15' 104°00' 103°45' 103°30' 103°15' 103°00' 102°45' 102°30' 102°15' 102°00' 101°45' 101°30' 101°15' 101°00' 100°45' 100°30' 100°15' 100°00' 99°45' 99°30' 99°15' 99°00' 98°45' 98°30' 98°15' 98°00' 97°45' 97°30' 97°15' 97°00' 96°45' 96°30' 96°15' 96°00' 95°45' 95°30' 95°15' 95°00' 94°45' 94°30' 94°15' 94°00' 93°45' 93°30' 93°15' 93°00' 92°45' 92°30' 92°15' 92°00' 91°45' 91°30' 91°15' 91°00' 90°45' 90°30' 90°15' 90°00' 89°45' 89°30' 89°15' 89°00' 88°45' 88°30' 88°15' 88°00' 87°45' 87°30' 87°15' 87°00' 86°45' 86°30' 86°15' 86°00' 85°45' 85°30' 85°15' 85°00' 84°45' 84°30' 84°15' 84°00' 83°45' 83°30' 83°15' 83°00' 82°45' 82°30' 82°15' 82°00' 81°45' 81°30' 81°15' 81°00' 80°45' 80°30' 80°15' 80°00' 79°45' 79°30' 79°15' 79°00' 78°45' 78°30' 78°15' 78°00' 77°45' 77°30' 77°15' 77°00' 76°45' 76°30' 76°15' 76°00' 75°45' 75°30' 75°15' 75°00' 74°45' 74°30' 74°15' 74°00' 73°45' 73°30' 73°15' 73°00' 72°45' 72°30' 72°15' 72°00' 71°45' 71°30' 71°15' 71°00' 70°45' 70°30' 70°15' 70°00' 69°45' 69°30' 69°15' 69°00' 68°45' 68°30' 68°15' 68°00' 67°45' 67°30' 67°15' 67°00' 66°45' 66°30' 66°15' 66°00' 65°45' 65°30' 65°15' 65°00' 64°45' 64°30' 64°15' 64°00' 63°45' 63°30' 63°15' 63°00' 62°45' 62°30' 62°15' 62°00' 61°45' 61°30' 61°15' 61°00' 60°45' 60°30' 60°15' 60°00' 59°45' 59°30' 59°15' 59°00' 58°45' 58°30' 58°15' 58°00' 57°45' 57°30' 57°15' 57°00' 56°45' 56°30' 56°15' 56°00' 55°45' 55°30' 55°15' 55°00' 54°45' 54°30' 54°15' 54°00' 53°45' 53°30' 53°15' 53°00' 52°45' 52°30' 52°15' 52°00' 51°45' 51°30' 51°15' 51°00' 50°45' 50°30' 50°15' 50°00' 49°45' 49°30' 49°15' 49°00' 48°45' 48°30' 48°15' 48°00' 47°45' 47°30' 47°15' 47°00' 46°45' 46°30' 46°15' 46°00' 45°45' 45°30' 45°15' 45°00' 44°45' 44°30' 44°15' 44°00' 43°45' 43°30' 43°15' 43°00' 42°45' 42°30' 42°15' 42°00' 41°45' 41°30' 41°15' 41°00' 40°45' 40°30' 40°15' 40°00' 39°45' 39°30' 39°15' 39°00' 38°45' 38°30' 38°15' 38°00' 37°45' 37°30' 37°15' 37°00' 36°45' 36°30' 36°15' 36°00' 35°45' 35°30' 35°15' 35°00' 34°45' 34°30' 34°15' 34°00' 33°45' 33°30' 33°15' 33°00' 32°45' 32°30' 32°15' 32°00' 31°45' 31°30' 31°15' 31°00' 30°45' 30°30' 30°15' 30°00' 29°45' 29°30' 29°15' 29°00' 28°45' 28°30' 28°15' 28°00' 27°45' 27°30' 27°15' 27°00' 26°45' 26°30' 26°15' 26°00' 25°45' 25°30' 25°15' 25°00' 24°45' 24°30' 24°15' 24°00' 23°45' 23°30' 23°15' 23°00' 22°45' 22°30' 22°15' 22°00' 21°45' 21°30' 21°15' 21°00' 20°45' 20°30' 20°15' 20°00' 19°45' 19°30' 19°15' 19°00' 18°45' 18°30' 18°15' 18°00' 17°45' 17°30' 17°15' 17°00' 16°45' 16°30' 16°15' 16°00' 15°45' 15°30' 15°15' 15°00' 14°45' 14°30' 14°15' 14°00' 13°45' 13°30' 13°15' 13°00' 12°45' 12°30' 12°15' 12°00' 11°45' 11°30' 11°15' 11°00' 10°45' 10°30' 10°15' 10°00' 9°45' 9°30' 9°15' 9°00' 8°45' 8°30' 8°15' 8°00' 7°45' 7°30' 7°15' 7°00' 6°45' 6°30' 6°15' 6°00' 5°45' 5°30' 5°15' 5°00' 4°45' 4°30' 4°15' 4°00' 3°45' 3°30' 3°15' 3°00' 2°45' 2°30' 2°15' 2°00' 1°45' 1°30' 1°15' 1°00' 0°45' 0°30' 0°15' 0°00' 0°45' N 0°30' N 0°15' N 0°00' N 0°45' E 0°30' E 0°15' E 0°00' E 0°45' W 0°30' W 0°15' W 0°00' W 0°45' S 0°30' S 0°15' S 0°00' S 0°45' SE 0°30' SE 0°15' SE 0°00' SE 0°45' SW 0°30' SW 0°15' SW 0°00' SW 0°45' NE 0°30' NE 0°15' NE 0°00' NE 0°45' NW 0°30' NW 0°15' NW 0°00' NW 0°45' S 0°30' S 0°15' S 0°00' S 0°45' SE 0°30' SE 0°15' SE 0°00' SE 0°45' SW 0°30' SW 0°15' SW 0°00' SW 0°45' NE 0°30' NE 0°15' NE 0°00' NE 0°45' NW 0°30' NW 0°15' NW 0°00' NW



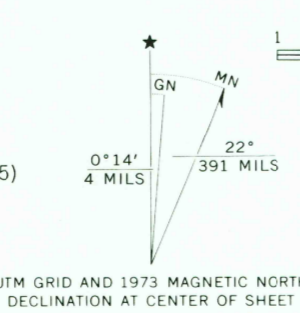
Mapped, edited, and published by the Geological Survey  
Control by USGS and NOS/NOAA

Topography by photogrammetric methods from aerial  
photographs taken 1972. Field checked 1973

Selected hydrographic data compiled from NOS/NOAA  
Charts 6404 (1972), 18421 (1975), 18427 (1975) and 18441 (1975)  
This information is not intended for navigational purposes

Projection and 10,000-foot grid ticks: Washington coordinate  
system, north zone (Lambert conformal conic)  
1000-metre Universal Transverse Mercator grid ticks,  
zone 10, shown in blue. 1927 North American datum

Red tint indicates areas in which only landmark buildings are shown  
Fine red dashed lines indicate selected fence lines



SCALE 1:24 000  
CONTOUR INTERVAL 20 FEET  
DOTTED LINES REPRESENT 10-FOOT CONTOURS  
NATIONAL GEODETIC VERTICAL DATUM OF 1929  
DEPTH CURVES AND SOUNDINGS IN FEET—DATUM IS MEAN LOWER LOW WATER  
SHORELINE SHOWN REPRESENTS THE APPROXIMATE LINE OF MEAN HIGH WATER  
THE MEAN RANGE OF TIDE IS APPROXIMATELY 7 FEET



ROAD CLASSIFICATION  
Primary highway, hard surface  
Secondary highway, hard surface  
Light duty road, hard or improved surface  
Unimproved road  
Interstate Route  
U. S. Route  
State Route

OAK HARBOR, WASH.  
SW 4 DECEPTION PASS 15' QUADRANGLE  
N4815—W12237.5/7.5

USGS  
Historical File  
Topographic Division  
1973  
AMS 1480 I SW—SERIES V891

3850  
AUG 23 1977