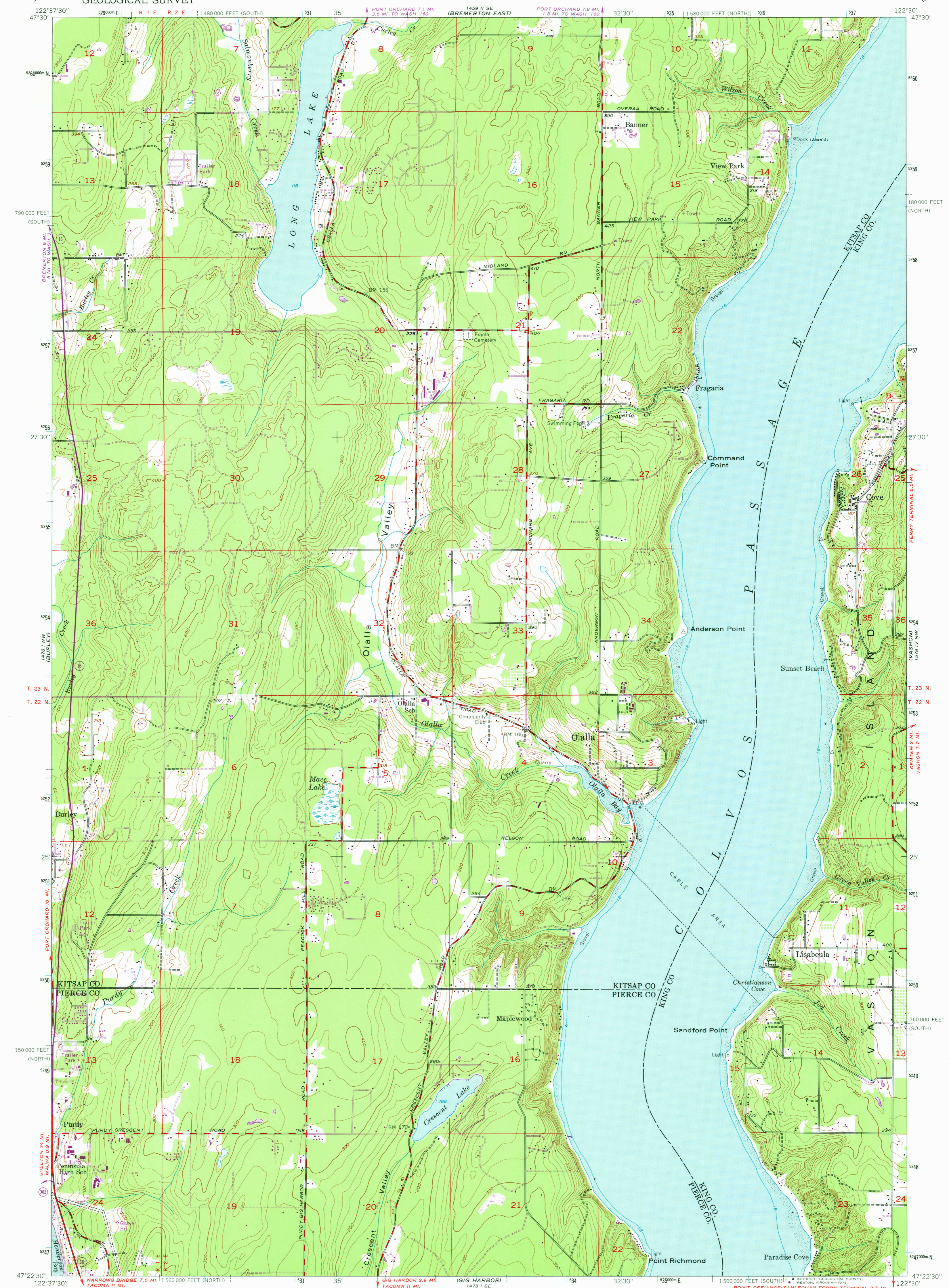


UNITED STATES
DEPARTMENT OF THE INTERIOR
GEOLOGICAL SURVEY

OLALLA QUADRANGLE
WASHINGTON
7.5 MINUTE SERIES (TOPOGRAPHIC)



Mapped, edited, and published by the Geological Survey
Control by USGS and USC&GS
Topography from aerial photographs by multiplex methods
Aerial photographs taken 1951. Field check 1953
Polyconic projection. 1927 North American datum
10,000-foot grids based on Washington coordinate system,
north and south zones
Hydrography from USC&GS chart 6460
1000-meter Universal Transverse Mercator grid ticks,
zone 10, shown in blue
Revisions shown in purple compiled from aerial photographs
taken 1968 and 1973. This information not field checked

UTM GRID AND 1973 MAGNETIC NORTH DECLINATION AT CENTER OF SHEET

SCALE 1:24,000

1 0 1000 2000 3000 4000 5000 6000 7000 FEET
1 0 5 10 KILOMETER

CONTOUR INTERVAL 20 FEET
NATIONAL GEODETIC VERTICAL DATUM OF 1929
DEPTH CURVES IN FEET-DATUM IS MEAN LOWER LOW WATER
SHORELINE SHOWN REPRESENTS THE APPROXIMATE LINE OF MEAN HIGH WATER
THE AVERAGE RANGE OF TIDE IS APPROXIMATELY 8 FEET

THIS MAP COMPLIES WITH NATIONAL MAP ACCURACY STANDARDS
FOR SALE BY U. S. GEOLOGICAL SURVEY, DENVER, COLORADO 80225, OR RESTON, VIRGINIA 22092
A FOLDER DESCRIBING TOPOGRAPHIC MAPS AND SYMBOLS IS AVAILABLE ON REQUEST

ROAD CLASSIFICATION

Heavy-duty ——— Light-duty ———
Medium-duty - - - - - Unimproved dirt - - - - -
State Route ○

WASHINGTON

QUADRANGLE LOCATION

USGS
HISTORICAL FILE
TOPOGRAPHIC DIVISION

1953
PHOTOREVISED 1968 AND 1973
AMS 1478 1 NE-SERIES V891

OLALLA, WASH.
N 4722.5-W 122307.5

FEB 10 1976