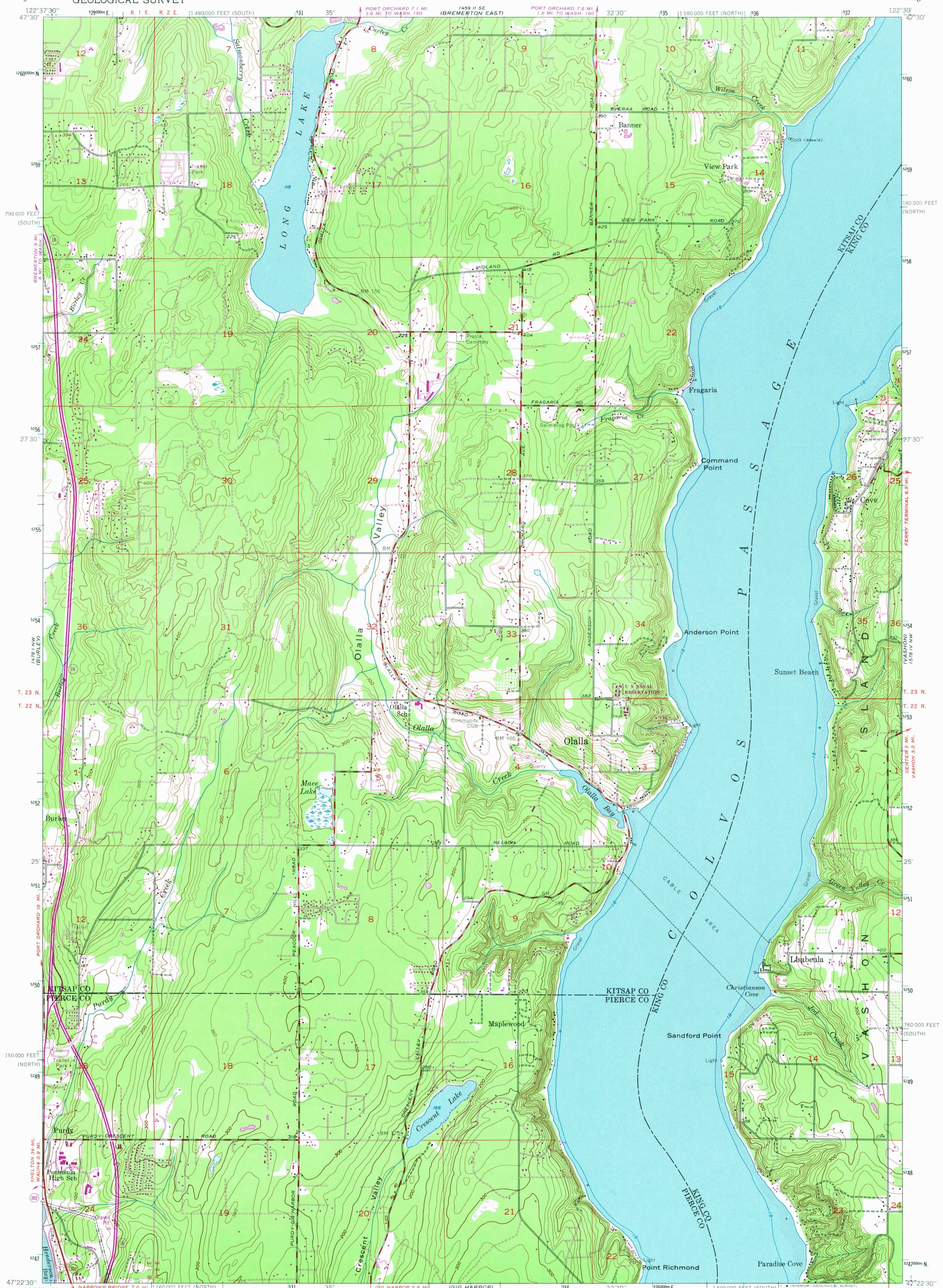


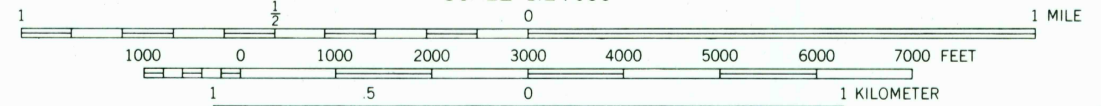
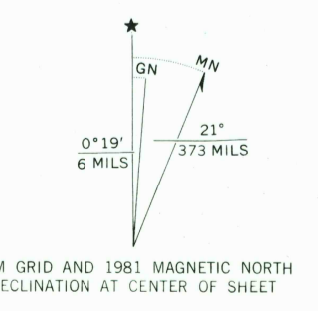
UNITED STATES
DEPARTMENT OF THE INTERIOR
GEOLOGICAL SURVEY

OLALLA QUADRANGLE
WASHINGTON
7.5 MINUTE SERIES (TOPOGRAPHIC)

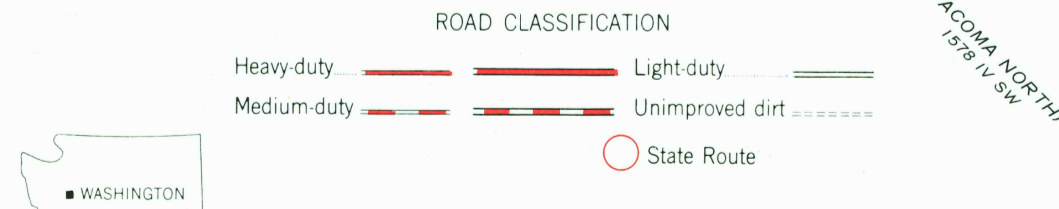


Mapped, edited, and published by the Geological Survey

Control by USGS and NOS/NOAA
Topography by photogrammetric methods from aerial photographs taken 1951. Field checked 1953
Selected hydrographic data compiled from NOS chart 6460
This information not intended for navigational purposes
Polyconic projection. 10,000-foot grid ticks based on Washington coordinate system, north and south zones. 1,000-meter Universal Transverse Mercator grid ticks, zone 10, shown in blue. 1927 North American Datum. To place on the predicted North American Datum 1983 move the projection lines 23 meters north and 94 meters east as shown by dashed corner ticks
There may be private inholdings within the boundaries of the National or State reservations shown on this map
Revisions shown in purple and woodland compiled from aerial photographs taken 1978 and other sources. This information not field checked. Map edited 1981



SCALE 1:24,000
CONTOUR INTERVAL 20 FEET
NATIONAL GEODETIC VERTICAL DATUM OF 1929
DEPTH CURVES AND SOUNDINGS IN FEET—DATUM IS MEAN LOWER LOW WATER
THE RELATIONSHIP BETWEEN THE TWO DATUMS IS VARIABLE
SHORELINE SHOWN REPRESENTS THE APPROXIMATE LINE OF MEAN HIGH WATER
THE MEAN RANGE OF TIDE IS APPROXIMATELY 6 FEET



OLALLA, WASH.
N 4722.5 - W 12230/7.5

THIS MAP COMPLIES WITH NATIONAL MAP ACCURACY STANDARDS
FOR SALE BY U.S. GEOLOGICAL SURVEY, DENVER, COLORADO 80225, OR RESTON, VIRGINIA 22092
A FOLDER DESCRIBING TOPOGRAPHIC MAPS AND SYMBOLS IS AVAILABLE ON REQUEST

1953
PHOTOREVISED 1981
DMA 1478 I NE—SERIES V891

RETURN TO:
USGS AND HISTORICAL MAP ARCHIVES

JAN 13 1982

2775