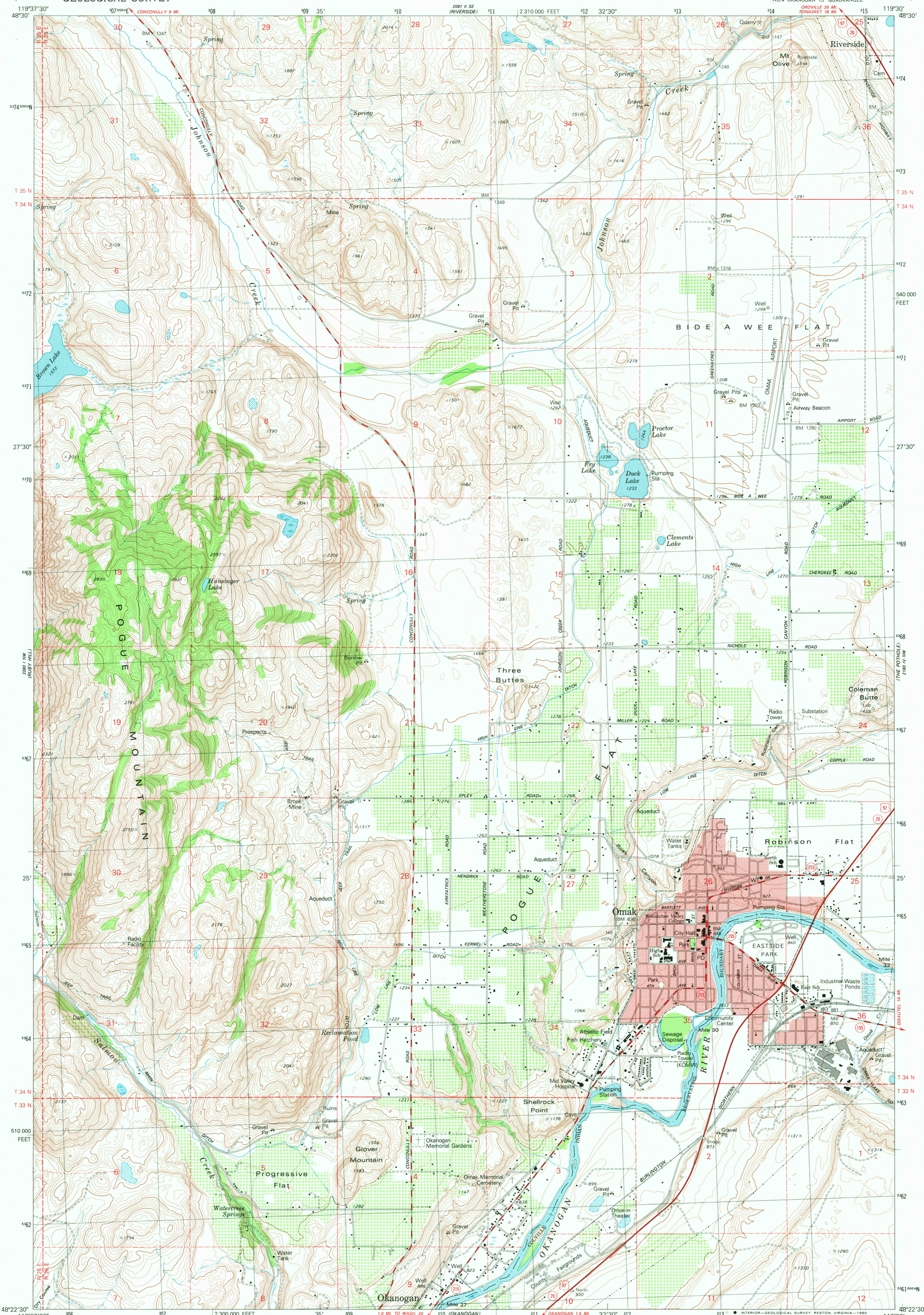
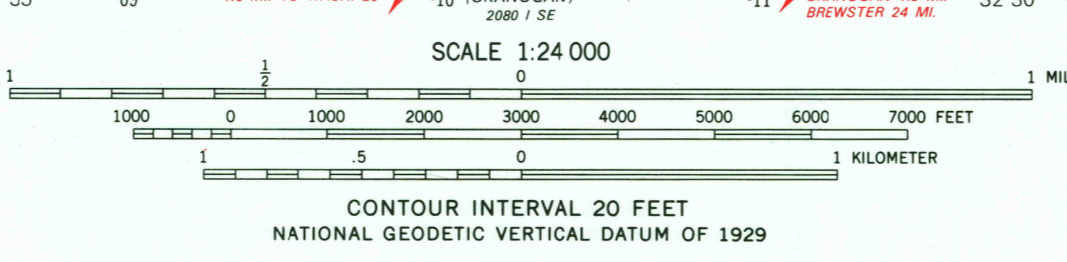
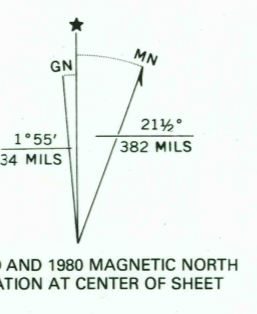


UNITED STATES  
DEPARTMENT OF THE INTERIOR  
GEOLOGICAL SURVEY

OMAK QUADRANGLE  
WASHINGTON-OKANOGAN CO.  
7.5 MINUTE SERIES (TOPOGRAPHIC)



Mapped, edited, and published by the Geological Survey  
Control by USGS and NOS/NOAA  
Topography by photogrammetric methods from aerial photographs taken 1973. Field checked 1975  
Map edited 1980  
Projection and 10,000-foot grid ticks: Washington coordinate system, north zone (Lambert conformal conic)  
1000-meter Transverse Mercator grid, zone 11 1927 North American Datum  
To place on the predicted North American Datum 1983 move the projection lines 19 meters north and 86 meters east as shown by dashed corner ticks  
Red tint indicates areas in which only landmark buildings are shown  
There may be private inholdings within the boundaries of the National or State reservations shown on this map



ROAD CLASSIFICATION

Primary highway, hard surface	Light-duty road, hard or improved surface
Secondary highway, hard surface	Unimproved road
Interstate Route	U. S. Route
	State Route

OMAK, WASH.  
NE/4 OKANOGAN 15' QUADRANGLE  
N4822.5-W119307.5  
1980  
DMA 2080 1 NE-SERIES 7891

NOV 18 1980  
1950  
USGS  
Historical File  
Topographic Photo