

123°52'30"

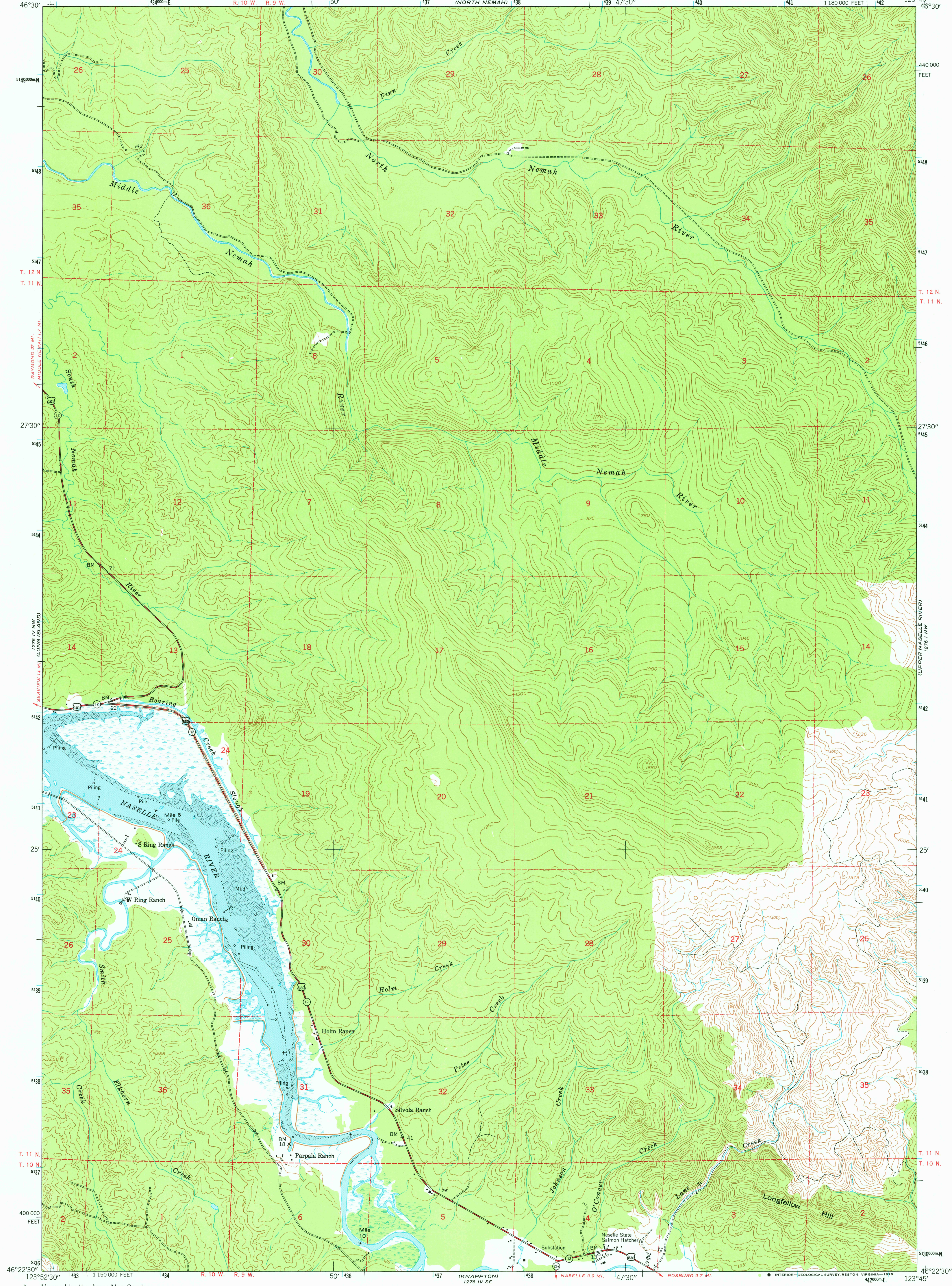
UNITED STATES DEPARTMENT OF THE INTERIOR GEOLOGICAL SURVEY



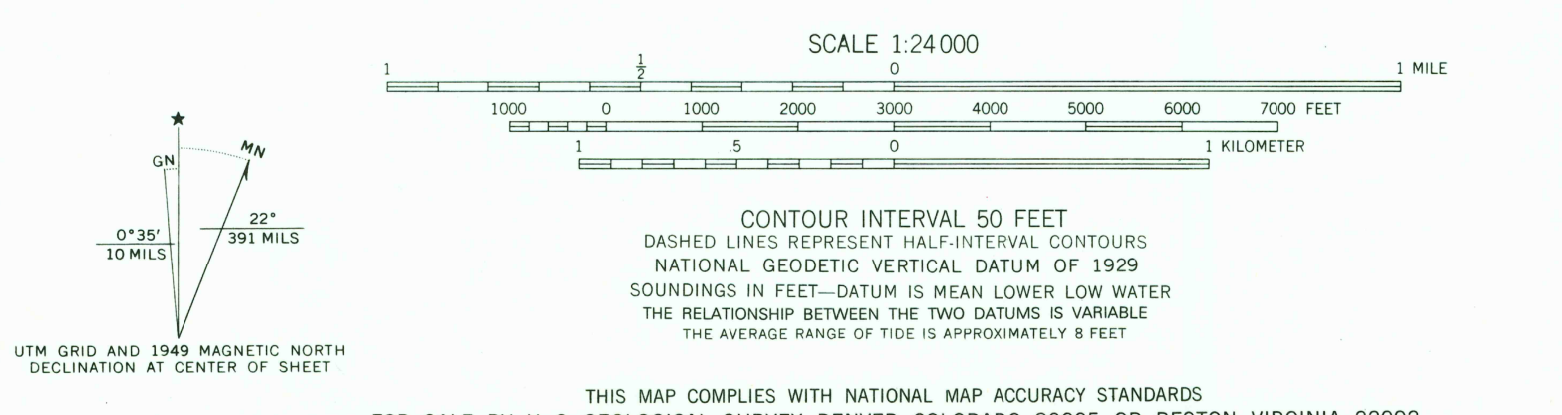
UNITED STATES DEPARTMENT OF THE ARMY CORPS OF ENGINEERS

OMAN RANCH QUADRANGLE WASHINGTON—PACIFIC CO. 7.5 MINUTE SERIES (TOPOGRAPHIC)

123°45'



Map by Army Map Service... Topography from aerial photographs... Polyconic projection... UTM GRID AND 1949 MAGNETIC NORTH DECLINATION AT CENTER OF SHEET



ROAD CLASSIFICATION: Heavy-duty, Medium-duty, U.S. Route, State Route. Includes location map of Washington and USGS information.

SEP 20 1973

1750