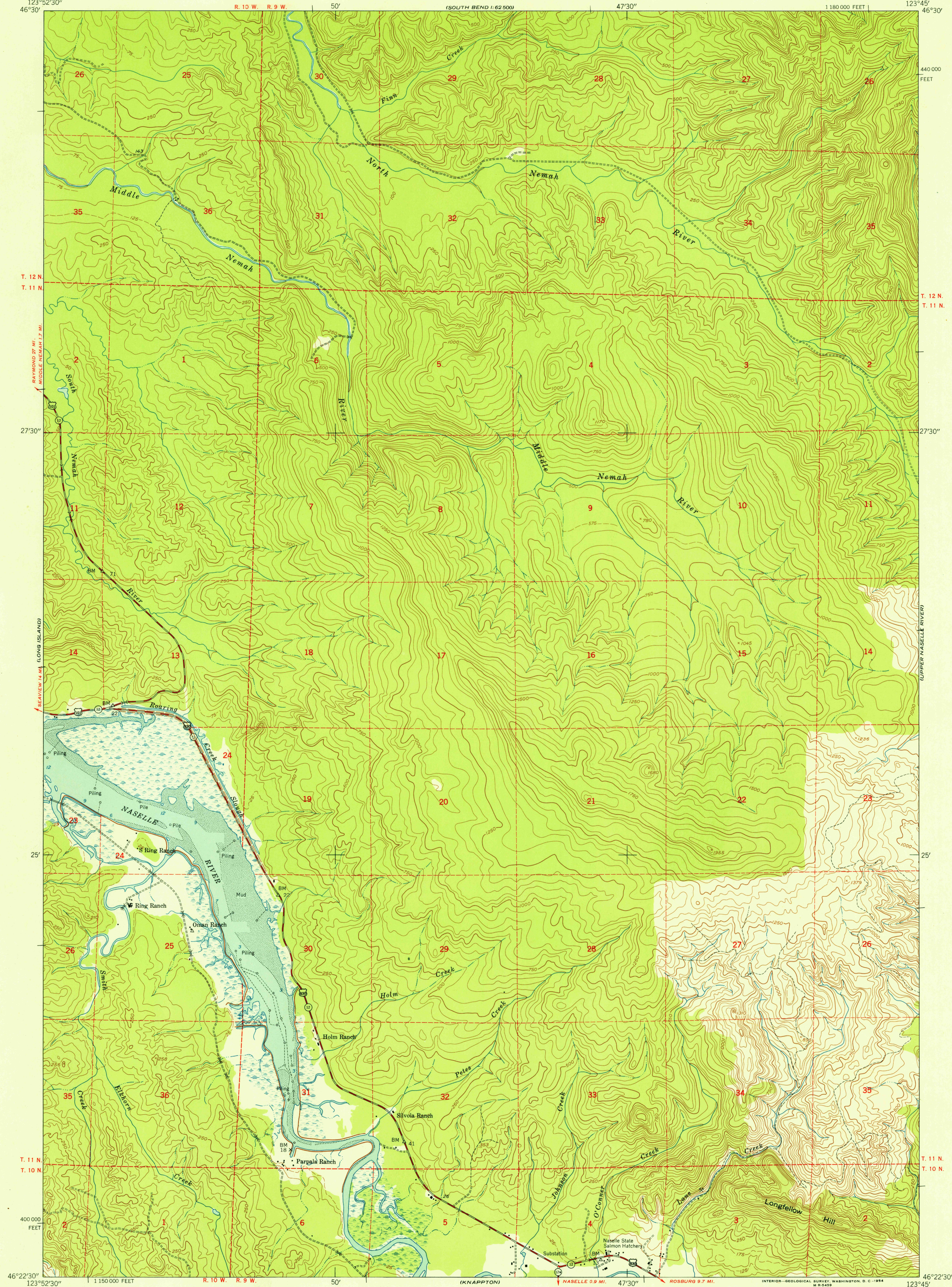
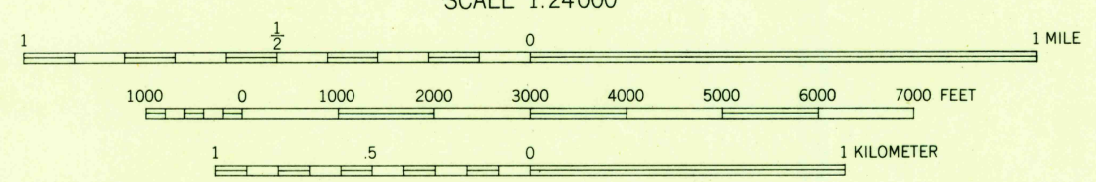
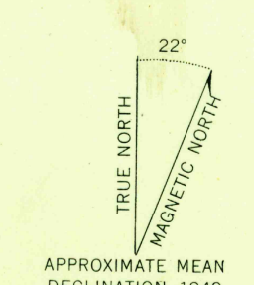


U.S.G.S.
FILE COPY
TOPOGRAPHIC DIVISION



Maped by the Army Map Service
Published for civil use by the Geological Survey
Control by USC&GS
Topography from aerial photographs by multiplex methods
Aerial photographs taken 1943. Field check 1949
Polyconic projection. 1927 North American datum
10,000-foot grid based on Washington coordinate system,
south zone
No distinction is made between dwellings, barns,
commercial and industrial buildings
Unchecked elevations are shown in brown
Dashed land lines indicate approximate locations



CONTOUR INTERVAL 50 FEET
DASHED LINES REPRESENT HALF-INTERVAL CONTOURS
DATUM IS MEAN SEA LEVEL
SOUNDINGS IN FEET—DATUM IS MEAN LOWER LOW WATER
SHORELINE SHOWN REPRESENTS THE APPROXIMATE LINE OF MEAN HIGH WATER
THE AVERAGE RANGE OF TIDE IS APPROXIMATELY 8 FEET

THIS MAP COMPLIES WITH NATIONAL MAP ACCURACY STANDARDS
FOR SALE BY U. S. GEOLOGICAL SURVEY, FEDERAL CENTER, DENVER, COLORADO OR WASHINGTON 25, D. C.
A FOLDER DESCRIBING TOPOGRAPHIC MAPS AND SYMBOLS IS AVAILABLE ON REQUEST

ROAD CLASSIFICATION
Heavy-duty 4 LANE 6 LANE Light-duty
Medium-duty 4 LANE 6 LANE Unimproved dirt
U. S. Route State Route



OMAN RANCH, WASH.
N4622.5—W12345.7.5

USGS
Historical File
Topographic Division

1949
DEC 17 1954
2125